



Douglas County 911  
N.D.O.R. District Ops Center  
Douglas County E.M.A.

EXIT

# FREEWAY DIVERSION

Nebraska

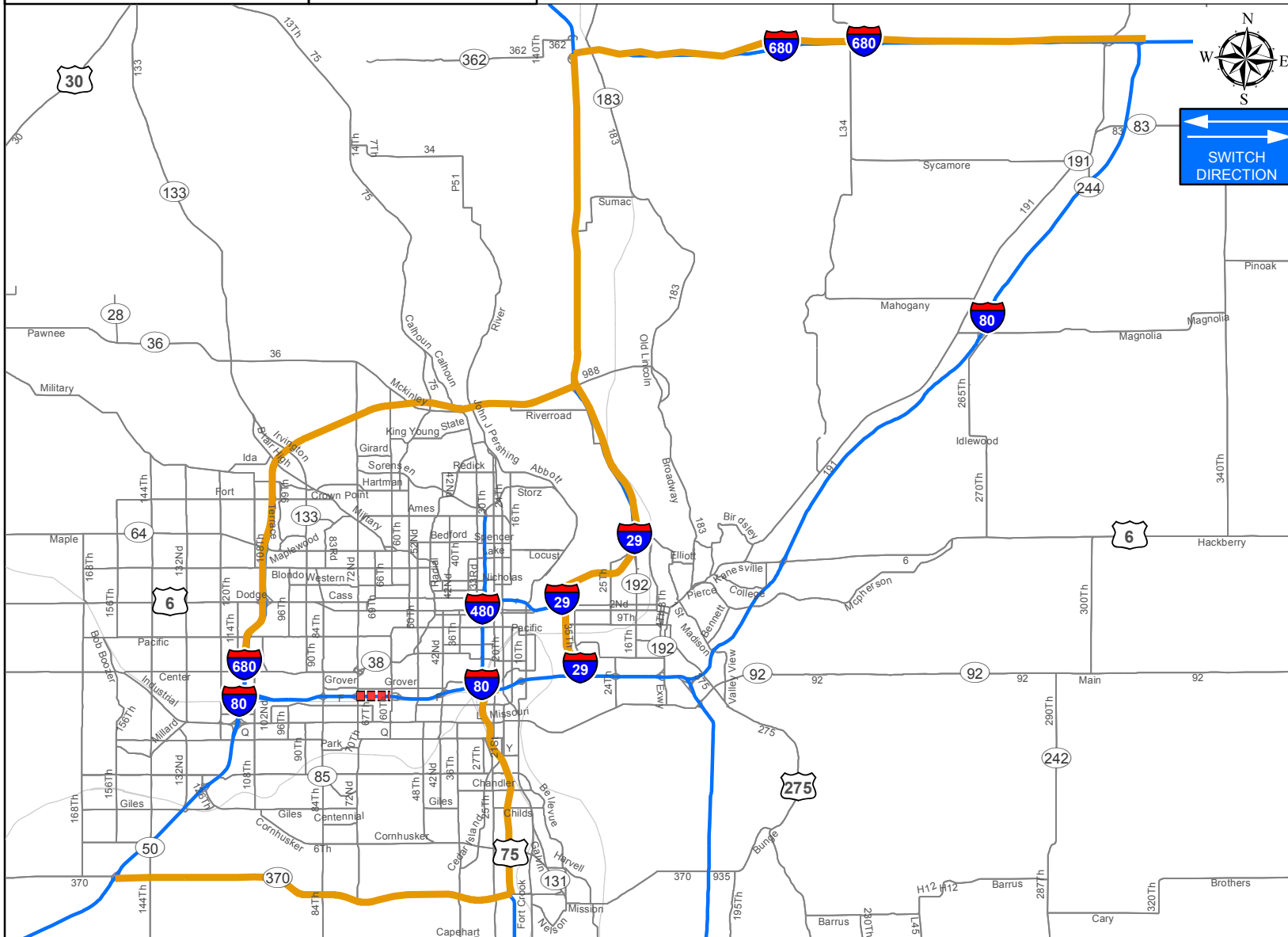
I-80

Westbound

FROM:  
Exit 450  
60th St

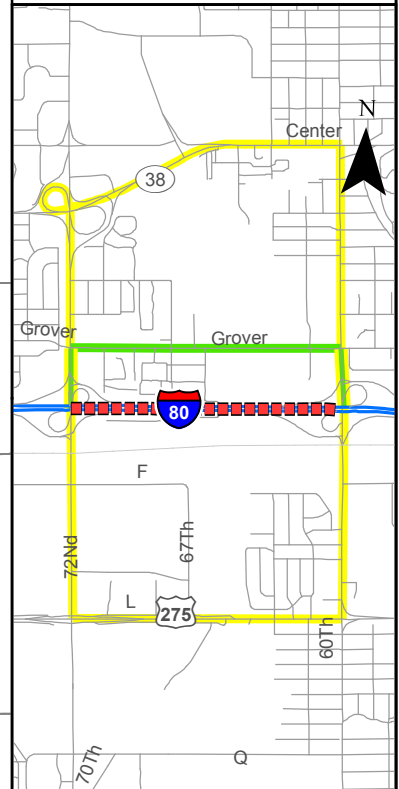
TO:  
Exit 449  
72nd St

PLAN 1115  
2 / 7



## LEGEND

- Closed Route
- Primary Local Detour
- Secondary Local Detour
- Global Diversion
- Interstate
- Streets



**CRITICAL LOCATIONS TO MONITOR/CONTROL**  
(See Local Detour Plan)

### AGENCIES TO NOTIFY:

Omaha Fire Department  
Nebraska State Patrol  
Douglas County Sheriff  
Omaha Police Department

Nebraska Dept. of Roads Maintenance  
Omaha Public Works Dept.  
Metro Area Transit (Bus)  
Towing Company

Douglas County 911  
N.D.O.R. District Ops Center  
Douglas County E.M.A.  
-----

HOME

DIVERSION  
INFORMATION

RESPONSE  
MATRIX

RESPONSE  
AGENCIES

DMS MESSAGES

BARRICADING/  
TRAFFIC CONTROL

EXIT

FREEWAY DIVERSION	Nebraska	I-80	Westbound	From: Exit 450 60 <sup>th</sup> St To: Exit 449 72 <sup>nd</sup> St	Plan 1115 <b>3/7</b>
----------------------	----------	------	-----------	--	-------------------------

CRITICAL AREAS TO MONITOR FOR DIVERSION DECISION MAKING		
Intersection/Location	Situation	Response
60 <sup>th</sup> St & I-80 WB off ramp	Traffic backing up in right turn lane	Use secondary route: Divert traffic to left turn onto 60 <sup>th</sup> St
60 <sup>th</sup> St & Grover St	Traffic backing up in left turn lane	Use secondary route: Divert traffic straight on 60 <sup>th</sup> St Divert traffic at 60 <sup>th</sup> St & I-80 WB off ramp to left turn onto 60 <sup>th</sup> St
72 <sup>nd</sup> St & Grover St	Traffic backing up in left turn lanes	Use secondary route: Divert traffic at 60 <sup>th</sup> St & I-80 WB off ramp to left turn onto 60 <sup>th</sup> St Divert traffic at 60 <sup>th</sup> St & Grover St straight on 60 <sup>th</sup> St

HOME	MAP	RESPONSE MATRIX	RESPONSE AGENCIES	DMS MESSAGES	BARRICADING/ TRAFFIC CONTROL	EXIT
------	-----	--------------------	----------------------	-----------------	------------------------------------	------

<b>FREEWAY DIVERSION</b>	Nebraska	I-80	Westbound	From: Exit 450 60 <sup>th</sup> St To: Exit 449 72 <sup>nd</sup> St	Plan 1115 <b>4/7</b>
------------------------------	----------	------	-----------	--	-------------------------

<b>ALTERNATE ROUTE RESPONSE PLAN</b>	
<b>Typical Situation</b>	<b>Potential Response(s)</b>
<b>Incident Located on Shoulder or Off of Roadway Expected Duration &lt; 30 min</b>	
Shoulder and/or one outside lane blocked	On scene traffic control only
No lanes blocked	Do nothing
<b>Incident Located on Roadway Expected Duration &lt; 2 hour</b>	
All lanes blocked	Full diversion
One outside lane and one inside lane blocked	Advanced warning using three upstream DMS Advise using alternate route
One inside lane blocked	Use spotter to direct traffic Advanced warning using two upstream DMS
Shoulder and/or one outside lane blocked	On scene traffic control Advanced warning using one upstream DMS
<b>Incident Located on Roadway Expected Duration &gt; 2 hour</b>	
All lanes blocked	Full diversion
Hazardous material spill	
Fatality	
Multi-vehicle/multiple incidents (close proximity)	
More than two lanes blocked including one or more inside lanes	Partial diversion Use DMS to have through traffic use global detour Divert one or more lanes of traffic onto local detour
One outside lane and one inside lane blocked	Set up cones/barricades to restrict lanes Advanced warning using upstream DMS Advise using alternate route

<a href="#">HOME</a>	<a href="#">DIVERSION INFORMATION</a>	<a href="#">MAP</a>	<a href="#">RESPONSE AGENCIES</a>	<a href="#">DMS MESSAGES</a>	<a href="#">BARRICADING/ TRAFFIC CONTROL</a>	<a href="#">EXIT</a>
----------------------	---	---------------------	---------------------------------------	----------------------------------	--	----------------------

<b>FREEWAY DIVERSION</b>	Nebraska	I-80	Westbound	From: Exit 450 60 <sup>th</sup> St To: Exit 449 72 <sup>nd</sup> St	Plan 1115 <b>5/7</b>
------------------------------	----------	------	-----------	--	-------------------------

<b>AGENCY CONTACTS</b>		
<b>Agency</b>	<b>Public Information</b>	<b>Private Information (Add the names and numbers below)</b>
Omaha Police Department Southwest Precinct	Emergency: 911 Office: 402-444-5794 Dispatch: 402-444-5808	Name/Position: Direct Number: Email:
Omaha Fire Department	Emergency: 911 Office: 402-444-5700 Dispatch: 402-444-5706	Name/Position: Direct Number: Email:
Omaha Public Works Department	Office:	Name/Position: Direct Number: Email:
Douglas County E.M.A.	Office: 402-444-5040	Name/Position: Direct Number: Email:
Douglas County Sheriff	Emergency: 911 Office: 402-444-6620 Dispatch: 402-444-5803	Name/Position: Direct Number: Email:
Nebraska State Patrol	Emergency: 911 Office: 402-331-3333 Dispatch:	Name/Position: Direct Number: Email:
NDOR	24 hour: Office: 402-595-2534 Maintenance: 402-595-2497	Name/Position: Direct Number: Email:
NDOR District Ops Center	Office:	Name/Position: Direct Number: Email:
Metro Area Transit	Office: 402-341-0800	Name/Position: Direct Number: Email:
Heartland Towing - Omaha	Number: 402-493-2500 Hours:	Name/Position: Direct Number: Email:

<a href="#">HOME</a>	<a href="#">DIVERSION INFORMATION</a>	<a href="#">RESPONSE MATRIX</a>	<a href="#">MAP</a>	<a href="#">DMS MESSAGES</a>	<a href="#">BARRICADING/ TRAFFIC CONTROL</a>	<a href="#">EXIT</a>
----------------------	---	-------------------------------------	---------------------	----------------------------------	--	----------------------

<b>FREEWAY DIVERSION</b>	Nebraska	I-80	Westbound	From: Exit 450 60 <sup>th</sup> St To: Exit 449 72 <sup>nd</sup> St	Plan 1115 <b>6A/7</b>
------------------------------	----------	------	-----------	--	--------------------------

<b>DMS MESSAGES</b>			
<b>With Traffic Flow</b>			
<b>Sign ID</b>	<b>Sign Location</b>	<b>Direction</b>	<b>Message Options</b>
IaDOT: 5  NDOR: D2-DMS 05	On I-80 East of 60 <sup>th</sup> St Exit (Exit 450) 1 <sup>st</sup> sign upstream	Westbound	I-80 CLOSED AT EXIT 450
			ALL TRAFFIC MUST EXIT AT 60TH ST
IaDOT: 4  NDOR: n/a	On I-80 East of 13 <sup>th</sup> St Exit (Exit 454) 2 <sup>nd</sup> sign upstream	Westbound	I-80 CLOSED AT EXIT 450 60TH ST
			I-80 TRAFFIC CONSIDER ALTERNATE ROUTE
IaDOT: 48  NDOR: n/a	On I-80/I-29 East of 24 <sup>th</sup> St Exit (Exit 1B) 3 <sup>rd</sup> sign upstream	Westbound	I-80 CLOSED AT 60TH ST IN OMAHA
			I-80 THRU TRAFFIC CONSIDER US-75 S TO N-370 W
IaDOT: 19  NDOR: n/a	On I-80 East of Minden Exit (Exit 29)	Westbound	I-80 CLOSED AT 60TH ST IN OMAHA
			I-80 THRU TRAFFIC CONSIDER I-680
IaDOT: 8  NDOR: D2-DMS 08	On I-480 North of Martha St Exit (Exit 1A)	Southbound	I-80 WEST CLOSED AT EXIT 450 60TH ST
			I-80 WEST TRAFFIC CONSIDER ALTERNATE ROUTE

HOME	DIVERSION INFORMATION	RESPONSE MATRIX	RESPONSE AGENCIES	MAP	BARRICADING/ TRAFFIC CONTROL	EXIT
------	--------------------------	--------------------	----------------------	-----	------------------------------------	------

FREEWAY DIVERSION	Nebraska	I-80	Westbound	From: Exit 450 60 <sup>th</sup> St To: Exit 449 72 <sup>nd</sup> St	Plan 1115 <b>6B/7</b>
----------------------	----------	------	-----------	--	--------------------------

DMS MESSAGES			
With Traffic Flow			
Sign ID	Sign Location	Direction	Message Options
IaDOT: 9  NDOR: D2-DMS 09	On US-75 South of Q St Exit	Northbound	I-80 WEST CLOSED AT EXIT 450 60TH ST
			I-80 WEST TRAFFIC CONSIDER ALTERNATE ROUTE
Opposite Traffic Flow			
Sign ID	Sign Location	Direction	Message Options
IaDOT: 2  NDOR: D2-DMS 02	On I-80 East of 84 <sup>th</sup> St Exit (Exit 448)	Eastbound	CAUTION ACCIDENT AHEAD I-80 WESTBOUND

HOME	DIVERSION INFORMATION	RESPONSE MATRIX	RESPONSE AGENCIES	MAP	BARRICADING/ TRAFFIC CONTROL	EXIT
------	--------------------------	--------------------	----------------------	-----	------------------------------------	------

<b>FREEWAY DIVERSION</b>	Nebraska	I-80	Westbound	From: Exit 450 60 <sup>th</sup> St To: Exit 449 72 <sup>nd</sup> St	Plan 1115 <b>7/7</b>
------------------------------	----------	------	-----------	--	-------------------------

<b>TRAFFIC CONTROL</b>		
<b>Intersection/Location</b>	<b>Initial Action/ Resource Needed</b>	<b>Extended Duration Action/ Resource Needed</b>
<b>Primary Alternate</b>		
60 <sup>th</sup> St & I-80 WB off ramp	Law Enforcement Traffic Control Detour sign	Adjust signal timing
60 <sup>th</sup> St & Grover St	Law Enforcement Traffic Control Detour sign	Adjust signal timing
72 <sup>nd</sup> St & Grover St	Law Enforcement Traffic Control Detour sign	Adjust signal timing
72 <sup>nd</sup> St & I-80 WB on ramp split	Detour sign	
<b>Secondary Alternate – via Center</b>		
60 <sup>th</sup> St & Grover St	Law Enforcement traffic control (dividing traff. between Prim. & Sec.)	
60 <sup>th</sup> St & Center St	Detour sign	Law Enforcement traffic control as needed
Center St & 72 <sup>nd</sup> St on ramp split	Detour sign	
72 <sup>nd</sup> St & Grover St	Law Enforcement traffic control (merging traff. between Prim. & Sec.)	
72 <sup>nd</sup> St SB & I-80 WB on ramp split	Detour sign	
<b>Secondary Alternate – via L St</b>		
60 <sup>th</sup> St & L St	Detour sign	Law Enforcement traffic control as needed
L St WB & 72 <sup>nd</sup> St on ramp split	Detour sign	
L St off ramp & 72 <sup>nd</sup> St	Detour sign	Law Enforcement traffic control as needed
72 <sup>nd</sup> St & I-80 WB on ramp split	Detour sign	

<a href="#">HOME</a>	<a href="#">DIVERSION INFORMATION</a>	<a href="#">RESPONSE MATRIX</a>	<a href="#">RESPONSE AGENCIES</a>	<a href="#">DMS MESSAGES</a>	<a href="#">MAP</a>	<a href="#">EXIT</a>
----------------------	---	-------------------------------------	---------------------------------------	----------------------------------	---------------------	----------------------