

# FREEWAY DIVERSION

Nebraska

US-75

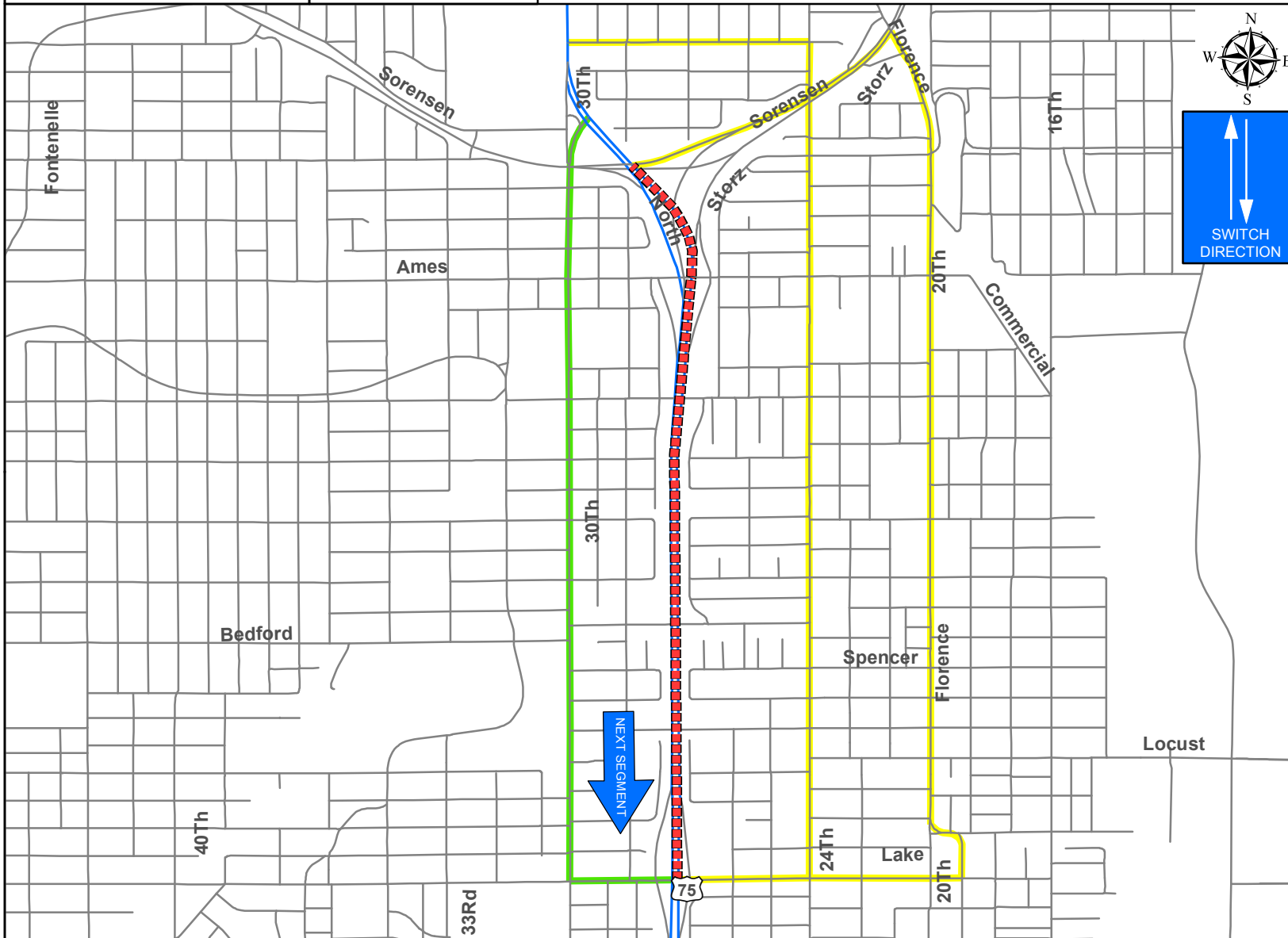
Northbound

FROM:  
Lake St

TO:  
Sorensen Pkwy

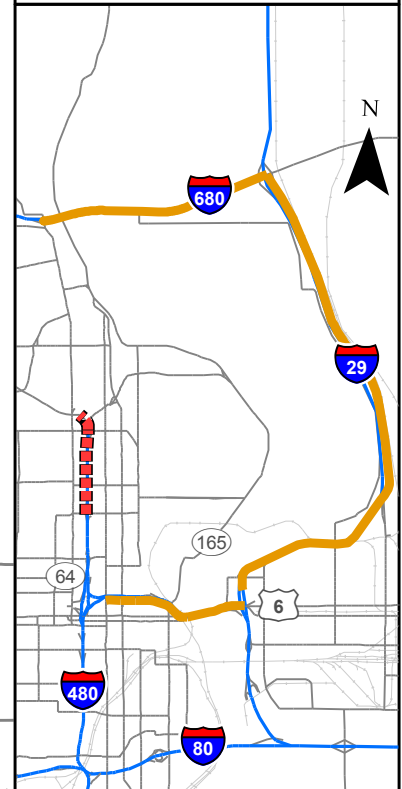
PLAN 1520

1 / 7



## LEGEND

- Closed Route
- Primary Local Detour
- Secondary Local Detour
- Global Diversion
- Interstate
- Streets



## CRITICAL LOCATIONS TO MONITOR/CONTROL

Lake St & US-75 NB off ramp  
Lake St & 30th St  
US-75 & 30th St

## AGENCIES TO NOTIFY:

Omaha Fire Department  
Nebraska State Patrol  
Douglas County Sheriff  
Omaha Police Department

Nebraska Dept. of Roads Maintenance  
Omaha Public Works Dept.  
Metro Area Transit (Bus)  
Towing Company

Douglas County 911  
N.D.O.R. District Ops Center  
Douglas County E.M.A.

HOME

DIVERSION  
INFORMATION

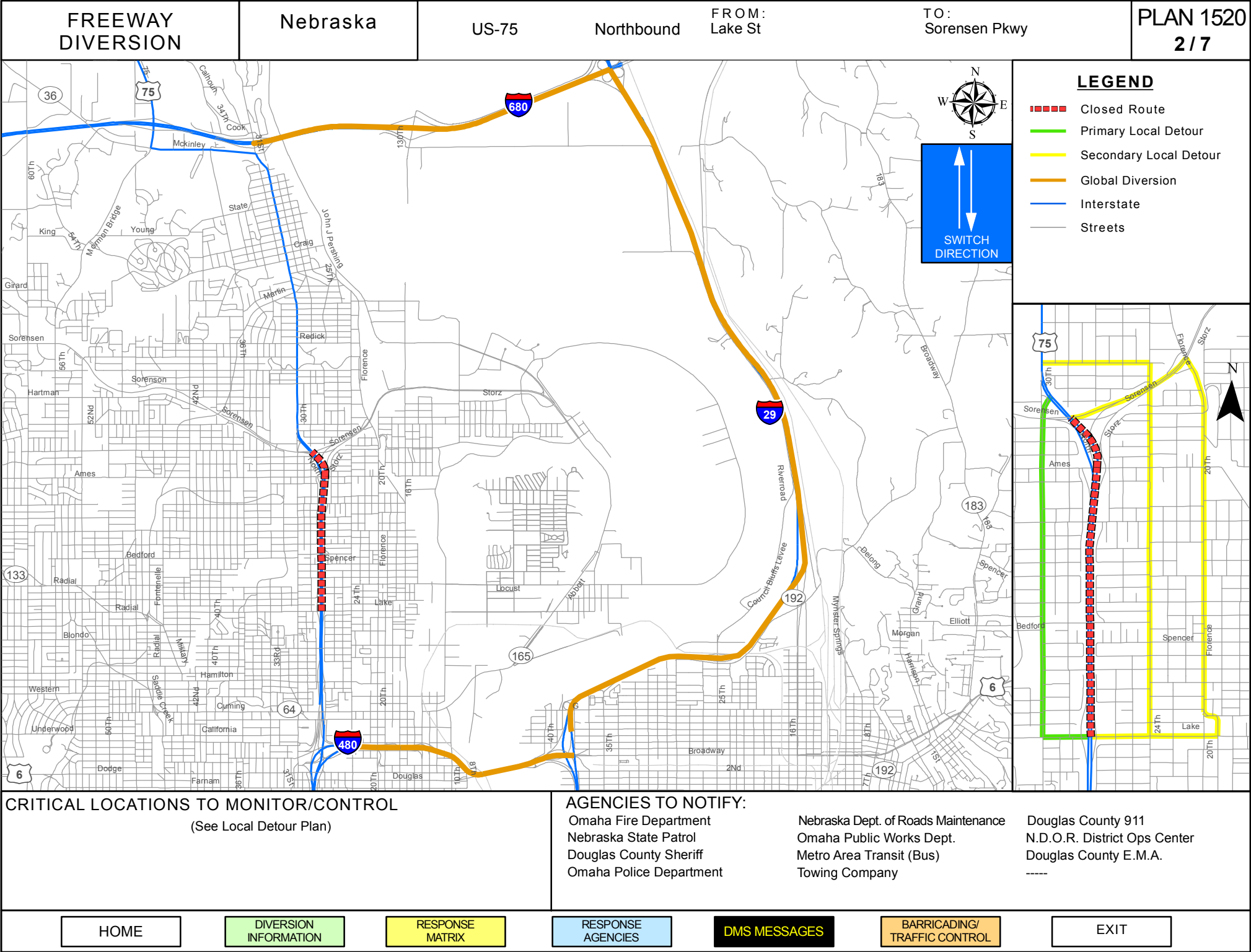
RESPONSE  
MATRIX

RESPONSE  
AGENCIES

DMS MESSAGES

BARRICADING/  
TRAFFIC CONTROL

EXIT



<b>FREEWAY DIVERSION</b>	Nebraska	US-75	Northbound	From: Lake St To: Sorensen Pkwy	Plan 1520 <b>3/7</b>
------------------------------	----------	-------	------------	------------------------------------	-------------------------

<b>CRITICAL AREAS TO MONITOR FOR DIVERSION DECISION MAKING</b>		
<b>Intersection/Location</b>	<b>Situation</b>	<b>Response</b>
Lake St & US-75 NB off ramp	Traffic backing up in left turn lane	Use secondary route: Divert traffic to right turn onto Lake St
Lake St & 30 <sup>th</sup> St	Traffic backing up at intersection	Use secondary route: Divert traffic at Lake St & US-75 NB off ramp to right turn onto Lake St
US-75 & 30 <sup>th</sup> St	Traffic backing up at intersection	Use secondary route: Divert traffic at Lake St & US-75 NB off ramp to right turn onto Lake St

<a href="#">HOME</a>	<a href="#">MAP</a>	<a href="#">RESPONSE MATRIX</a>	<a href="#">RESPONSE AGENCIES</a>	<a href="#">DMS MESSAGES</a>	<a href="#">BARRICADING/ TRAFFIC CONTROL</a>	<a href="#">EXIT</a>
----------------------	---------------------	-------------------------------------	---------------------------------------	----------------------------------	--	----------------------

FREEWAY DIVERSION	Nebraska	US-75	Northbound	From: Lake St To: Sorensen Pkwy	Plan 1520 <b>5/7</b>
----------------------	----------	-------	------------	------------------------------------	-------------------------

AGENCY CONTACTS		
Agency	Public Information	Private Information (Add the names and numbers below)
Omaha Police Department Northeast Precinct	Emergency: 911 Office: 402-444-6916 Dispatch: 402-444-5805	Name/Position: Direct Number: Email:
Omaha Fire Department	Emergency: 911 Office: 402-444-5700 Dispatch: 402-444-5706	Name/Position: Direct Number: Email:
Omaha Public Works Department	Office:	Name/Position: Direct Number: Email:
Douglas County Sheriff	Emergency: 911 Office: 402-444-6620 Dispatch: 402-444-5803	Name/Position: Direct Number: Email:
Douglas County E.M.A.	Office: 402-444-5040	Name/Position: Direct Number: Email:
Nebraska State Patrol	Emergency: 911 Office: 402-331-3333 Dispatch:	Name/Position: Direct Number: Email:
NDOR	24 hour: Office: 402-595-2534 Maintenance: 402-595-2497	Name/Position: Direct Number: Email:
NDOR District Ops Center	Office:	Name/Position: Direct Number: Email:
Metro Area Transit	Office: 402-341-0800	Name/Position: Direct Number: Email:
Towing Company	Number: Hours:	Name/Position: Direct Number: Email:

HOME	DIVERSION INFORMATION	RESPONSE MATRIX	MAP	DMS MESSAGES	BARRICADING/ TRAFFIC CONTROL	EXIT
------	--------------------------	--------------------	-----	-----------------	------------------------------------	------

<b>FREEWAY DIVERSION</b>	Nebraska	US-75	Northbound	From: Lake St To: Sorensen Pkwy	Plan 1520 <b>4/7</b>
------------------------------	----------	-------	------------	------------------------------------	-------------------------

<b>ALTERNATE ROUTE RESPONSE PLAN</b>	
<b>Typical Situation</b>	<b>Potential Response(s)</b>
<b>Incident Located on Shoulder or Off of Roadway Expected Duration &lt; 30 min</b>	
Shoulder and/or one outside lane blocked	On scene traffic control only
No lanes blocked	Do nothing
<b>Incident Located on Roadway Expected Duration &lt; 2 hour</b>	
All lanes blocked	Full diversion
One outside lane and one inside lane blocked	Advanced warning using three upstream DMS Advise using alternate route
One inside lane blocked	Use spotter to direct traffic Advanced warning using two upstream DMS
Shoulder and/or one outside lane blocked	On scene traffic control Advanced warning using one upstream DMS
<b>Incident Located on Roadway Expected Duration &gt; 2 hour</b>	
All lanes blocked	Full diversion
Hazardous material spill	
Fatality	
Multi-vehicle/multiple incidents (close proximity)	
More than two lanes blocked including one or more inside lanes	Partial diversion Use DMS to have through traffic use global detour Divert one or more lanes of traffic onto local detour
One outside lane and one inside lane blocked	Set up cones/barricades to restrict lanes Advanced warning using upstream DMS Advise using alternate route

<a href="#">HOME</a>	<a href="#">DIVERSION INFORMATION</a>	<a href="#">MAP</a>	<a href="#">RESPONSE AGENCIES</a>	<a href="#">DMS MESSAGES</a>	<a href="#">BARRICADING/ TRAFFIC CONTROL</a>	<a href="#">EXIT</a>
----------------------	---	---------------------	---------------------------------------	----------------------------------	--	----------------------

<b>FREEWAY DIVERSION</b>	Nebraska	US-75	Northbound	From: Lake St To: Sorensen Pkwy	Plan 1520 <b>6/7</b>
------------------------------	----------	-------	------------	------------------------------------	-------------------------

<b>DMS MESSAGES</b>			
<b>With Traffic Flow</b>			
<b>Sign ID</b>	<b>Sign Location</b>	<b>Direction</b>	<b>Message Options</b>
IaDOT: 3  NDOR: D2-DMS 03	On I-80 East of 42 <sup>nd</sup> St Exit (Exit 451) 1 <sup>st</sup> sign upstream	Eastbound	NORTH FWY CLOSED PAST LAKE ST
			NORTH FWY THRU TRAF USE ALT RTE AT LAKE
IaDOT: 2  NDOR: D2-DMS 02	On I-80 East of 84 <sup>th</sup> St Exit (Exit 448) 2 <sup>nd</sup> sign upstream	Eastbound	NORTH FWY CLOSED PAST LAKE ST
			NORTH FWY THRU TRAF CONSIDER ALT RTE
IaDOT: 1  NDOR: D2-DMS 01	On I-80 West of Giles Rd Exit (Exit 442) 3 <sup>rd</sup> sign upstream	Eastbound	NORTH FWY CLOSED PAST LAKE ST
			NORTH OMAHA TRAFFIC CONSIDER I-680
IaDOT: 4  NDOR: n/a	On I-80 East of 13 <sup>th</sup> St Exit (Exit 454) 1 <sup>st</sup> sign upstream	Westbound	NORTH FWY CLOSED PAST LAKE ST
			NORTH FWY THRU TRAF USE ALT RTE AT LAKE
IaDOT: 48  NDOR: n/a	On I-80/I-29 East of 24 <sup>th</sup> St Exit (Exit 1B) 2 <sup>nd</sup> sign upstream	Westbound	NORTH FWY CLOSED IN OMAHA PAST LAKE ST
			NORTH FWY THRU TRAF CONSIDER ALT RTE
IaDOT: 9  NDOR: D2-DMS 09	On US-75 South of Q St Exit 1 <sup>st</sup> sign upstream	Northbound	NORTH FWY CLOSED PAST LAKE ST
			NORTH FWY THRU TRAF USE ALT RTE AT LAKE

HOME	DIVERSION INFORMATION	RESPONSE MATRIX	RESPONSE AGENCIES	MAP	BARRICADING/ TRAFFIC CONTROL	EXIT
------	--------------------------	--------------------	----------------------	-----	------------------------------------	------

<b>FREEWAY DIVERSION</b>	Nebraska	US-75	Northbound	From: Lake St To: Sorensen Pkwy	Plan 1520 <b>7/7</b>
------------------------------	----------	-------	------------	------------------------------------	-------------------------

<b>TRAFFIC CONTROL</b>		
<b>Intersection/Location</b>	<b>Initial Action/ Resource Needed</b>	<b>Extended Duration Action/ Resource Needed</b>
<b>Primary Alternate</b>		
US-75 NB off ramp & Lake St	Detour sign Law enforcement traffic control	Adjust signal timing
Lake St & 30 <sup>th</sup> St	Detour sign Law enforcement traffic control	Adjust signal timing
30 <sup>th</sup> St between Lake & Sorensen	Spaced detour signs as needed	Adjust signal timings
30 <sup>th</sup> St & US-75	Detour sign Law enforcement traffic control	Adjust signal timing
<b>Secondary Alternate – via 24<sup>th</sup> St</b>		
Lake St & 24 <sup>th</sup> St	Detour sign	Law enforcement traffic control as needed
24 <sup>th</sup> St between Lake & Fort	Spaced detour signs as needed	
24 <sup>th</sup> & Fort	Detour sign	
Fort & 30 <sup>th</sup> St/US-75	Detour sign	
<b>Secondary Alternate – via Florence Blvd</b>		
24 <sup>th</sup> & Lake	Law enforcement traffic control (splitting traff. between sec. routes)	
Lake St & 19 <sup>th</sup> St/Florence Blvd	Detour sign	
NB 19 <sup>th</sup> St/Florence Blvd split to Ohio St WB	Detour sign	
WB Ohio St split to NB 20 <sup>th</sup> St	Detour sign	
20 <sup>th</sup> St/Florence Blvd between Ohio & Storz Expy	Spaced detour signs as needed	
Florence Blvd & Storz Expy WB on ramp	Detour sign	

<a href="#">HOME</a>	<a href="#">DIVERSION INFORMATION</a>	<a href="#">RESPONSE MATRIX</a>	<a href="#">RESPONSE AGENCIES</a>	<a href="#">DMS MESSAGES</a>	<a href="#">MAP</a>	<a href="#">EXIT</a>
----------------------	---	-------------------------------------	---------------------------------------	----------------------------------	---------------------	----------------------