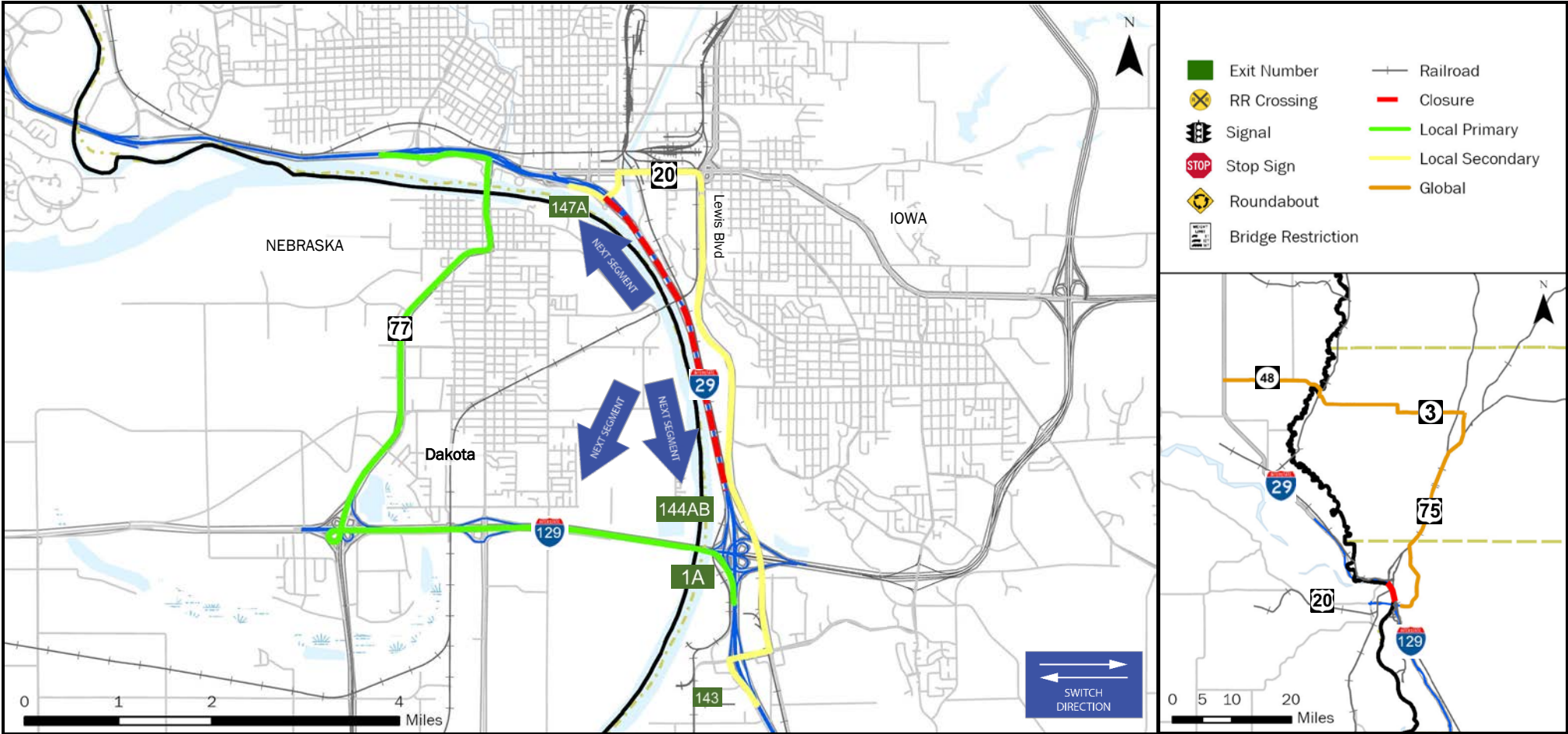
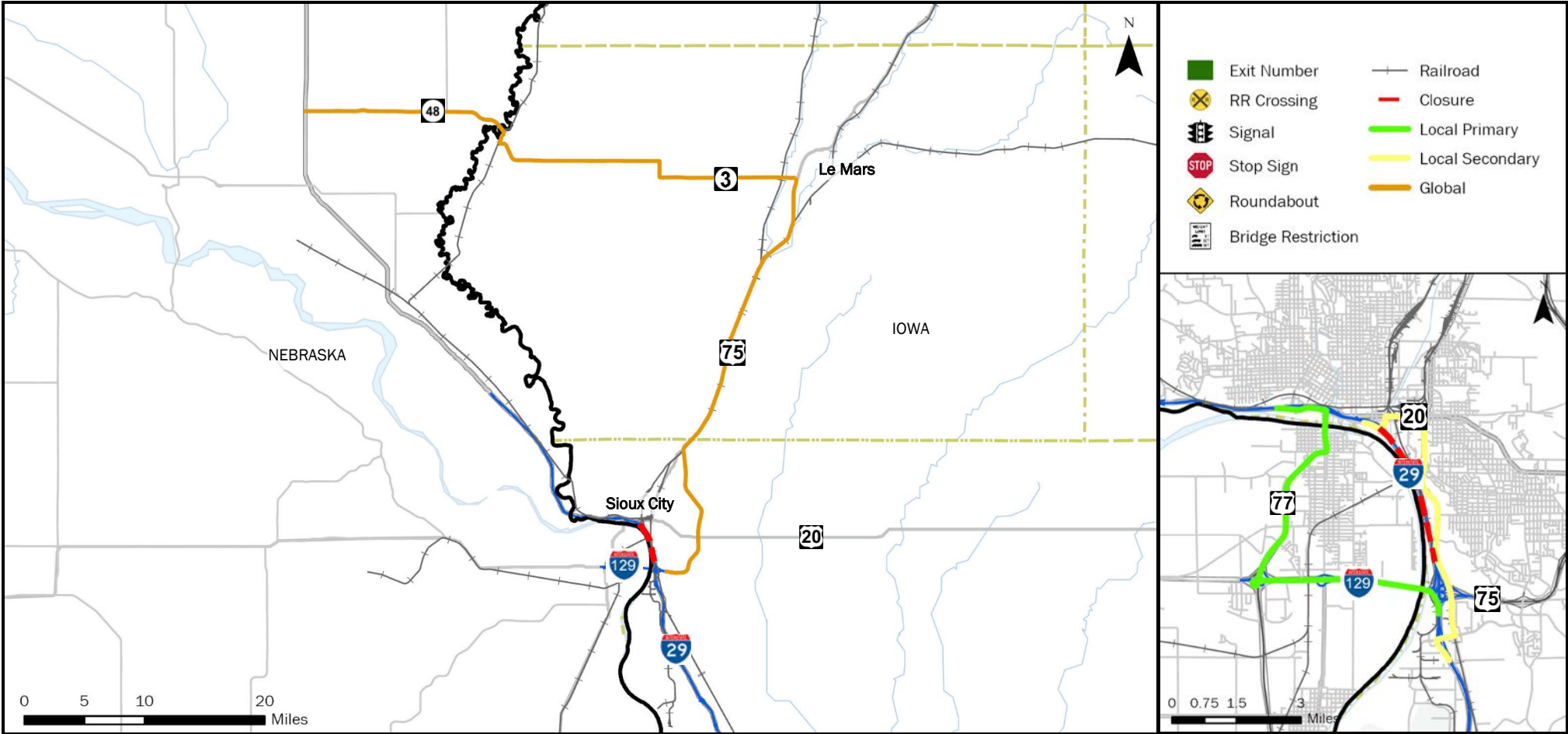


<b>FREEWAY DIVERSION</b>	<b>WOODBURY COUNTY IOWA</b>	<b>I-29 SOUTHBOUND</b>	<b>FROM:</b> Exit 147A Floyd Blvd.	<b>TO:</b> Exit 144AB I-129/US-20/ US 75	<b>PLAN 2016 1/7</b>
------------------------------	---------------------------------	------------------------	---------------------------------------	--	--------------------------



<b>CRITICAL LOCATIONS TO MONITOR FOR LOCAL PRIMARY</b>	<b>AGENCIES TO NOTIFY</b>	<b>Iowa DOT TMC: 515-237-3300</b>
SB I-29 Exit 149 SB US 77 Interchange to EB I-129 EB I-129 Exit 1A SB I-29 On Ramp 1A	DOT Traffic Operations Center Motor Carrier Services District 3 Office Nebraska Department of Roads District 3 South Dakota Department of Transportation Yankton Area Iowa State Patrol (Storm Lake) Nebraska State Patrol South Dakota State Patrol Woodbury County, IA Sheriff Union County, SD Sheriff Dakota County, NE Communications Center (Sheriff)	(515) 233-7900 (402) 370-3470 (605) 668-2929 (712) 732-1341 (402) 471-4545 (605) 356-3581 (712) 279-6010 (605) 356-2679 (402) 494-7555

<b>LOCAL DETOUR 1/7</b>	<b>GLOBAL DETOUR 2/7</b>	<b>CRITICAL LOCATIONS 3/7</b>	<b>RESPONSE PLAN 4/7</b>	<b>AGENCY CONTACTS 5/7</b>	<b>DMS MESSAGES 6/7</b>	<b>TRAFFIC CONTROL 7/7</b>
---------------------------------	----------------------------------	---------------------------------------	----------------------------------	------------------------------------	---------------------------------	------------------------------------



CRITICAL LOCATIONS TO MONITOR FOR GLOBAL		AGENCIES TO NOTIFY		Iowa DOT TMC: 515-237-3300	
		DOT Traffic Operations Center Motor Carrier Services District 3 Office		(515) 233-7900	
		Nebraska Department of Roads District 3		(402) 370-3470	
		South Dakota Department of Transportation Yankton Area		(605) 668-2929	
		Iowa State Patrol (Storm Lake)		(712) 732-1341	
		Nebraska State Patrol		(402) 471-4545	
		South Dakota State Patrol		(605) 356-3581	
		Woodbury County, IA Sheriff		(712) 279-6010	
		Union County, SD Sheriff		(605) 356-2679	
		Dakota County, NE Communications Center (Sheriff)		(402) 494-7555	

<b>FREEWAY DIVERSION</b>	<b>WOODBURY COUNTY IOWA</b>	<b>I-29 SOUTHBOUND</b>	<b>FROM:</b> Exit 147A Floyd Blvd. <b>TO:</b> Exit 144AB I-129/US-20/ US 75	<b>PLAN 2016 3/7</b>
------------------------------	---------------------------------	----------------------------	--	--------------------------

**CRITICAL AREAS TO MONITOR**

<b>LOCATION</b>	<b>EXIT</b>	<b>SITUATION</b>	<b>RESPONSE</b>
-----------------	-------------	------------------	-----------------

**Local Diversion - Primary**

SB I-29 Exit 149 SB	149	Traffic backing up at ramp	Deploy Law Enforcement to Control Traffic Flow as Needed
US 77 Interchange to EB I-129 EB		Traffic backing up at ramp	Deploy Law Enforcement to Control Traffic Flow as Needed
I-129 Exit 1A SB		Traffic backing up at ramp	Deploy Law Enforcement to Control Traffic Flow as Needed
I-29 On Ramp 1A		Traffic backing up at ramp	Deploy Law Enforcement to Control Traffic Flow as Needed

**Local Diversion - Secondary**

**NO CRITICAL LOCATIONS TO MONITOR**

**Global Diversion**

**NO CRITICAL LOCATIONS TO MONITOR**

<b>LOCAL DETOUR 1/7</b>	<b>GLOBAL DETOUR 2/7</b>	<b>CRITICAL LOCATIONS 3/7</b>	<b>RESPONSE PLAN 4/7</b>	<b>AGENCY CONTACTS 5/7</b>	<b>DMS MESSAGES 6/7</b>	<b>TRAFFIC CONTROL 7/7</b>
---------------------------------	----------------------------------	---------------------------------------	----------------------------------	------------------------------------	---------------------------------	------------------------------------

<b>FREEWAY DIVERSION</b>	<b>WOODBURY COUNTY IOWA</b>	<b>I-29 SOUTHBOUND</b>	<b>FROM:</b> Exit 147A Floyd Blvd. <b>TO:</b> Exit 144AB I-129/US-20/ US 75	<b>PLAN 2016 4/7</b>
<b>ALTERNATE ROUTE RESPONSE PLAN</b>				

### Minor Impact to Traffic (Less Than 30 Minutes)

Off Peak – Shoulder Blocked	Diversion not implemented: <ul style="list-style-type: none"> <li>• On-scene traffic control</li> <li>• Deploy informational DMS messaging for approaching traffic</li> </ul>
Off Peak – Shoulder and One Lane Blocked	

### Intermediate Impact to Traffic (30 Minutes to 2 Hours)

Peak Period – Shoulder Blocked	Diversion not implemented: <ul style="list-style-type: none"> <li>• On-scene traffic control</li> <li>• Deploy informational DMS messaging for approaching traffic</li> </ul>
Off Period – Shoulder and One Lane Blocked	
Peak Period – Shoulder and One Lane Blocked	<b>Partial Diversion:</b> <ul style="list-style-type: none"> <li>• On-scene traffic control</li> <li>• Deploy informational DMS messaging for approaching traffic</li> <li>• Deploy DMS messaging directing through traffic to use global diversion</li> <li>• Monitor local diversion routes at critical locations as needed</li> </ul>
All Lanes Blocked	<b>Full Diversion:</b> <ul style="list-style-type: none"> <li>• On-scene traffic control</li> <li>• Deploy DMS messaging directing all traffic to use diversion routes</li> <li>• Deploy law enforcement to direct traffic at critical locations</li> </ul>

### Major Impact to Traffic (Greater Than 2 Hours)

Peak Period – Shoulder Blocked	Diversion not implemented: <ul style="list-style-type: none"> <li>• On-scene traffic control</li> <li>• Deploy informational DMS messaging for approaching traffic</li> </ul>
Off Period – Shoulder and One Lane Blocked	
Peak Period – Shoulder and One Lane Blocked	<b>Partial/Discretionary Diversion:</b> <ul style="list-style-type: none"> <li>• Deploy cones, barricades, and other appropriate traffic control devices</li> <li>• Deploy informational DMS messaging for approaching traffic</li> <li>• Deploy DMS messaging directing through traffic to use global diversion</li> <li>• Divert traffic to local diversion routes at discretion of incident commander</li> </ul>
All Lanes Blocked	<b>Full Diversion:</b> <ul style="list-style-type: none"> <li>• Deploy cones, barricades, and other appropriate traffic control devices</li> <li>• Deploy DMS messaging directing all traffic to use diversion routes</li> <li>• Deploy law enforcement to direct traffic at critical locations</li> </ul>

<b>LOCAL DETOUR 1/7</b>	<b>GLOBAL DETOUR 2/7</b>	<b>CRITICAL LOCATIONS 3/7</b>	<b>RESPONSE PLAN 4/7</b>	<b>AGENCY CONTACTS 5/7</b>	<b>DMS MESSAGES 6/7</b>	<b>TRAFFIC CONTROL 7/7</b>
---------------------------------	----------------------------------	---------------------------------------	----------------------------------	------------------------------------	---------------------------------	------------------------------------

<b>FREEWAY DIVERSION</b>	<b>WOODBURY COUNTY IOWA</b>	<b>I-29 SOUTHBOUND</b>	<b>FROM:</b> Exit 147A Floyd Blvd. <b>TO:</b> Exit 144AB I-129/US-20/ US 75	<b>PLAN 2016 5A/7</b>
------------------------------	---------------------------------	----------------------------	--	---------------------------

**CRITICAL CONTACTS**

DOT Traffic Operations Center Motor Carrier Services District 3 Office (515) 233-7900	Nebraska Department of Roads District 3 (402) 370-3470	South Dakota Department of Transportation Yankton Area (605) 668-2929	Iowa State Patrol (Storm Lake) (712) 732-1341	Nebraska State Patrol (402) 471-4545
--	---	---	---	--

South Dakota State Patrol (605) 356-3581	Woodbury County, IA Sheriff (712) 279-6010	Dakota County, NE Communications Center (Sheriff) (402) 494-7555	Union County, SD Sheriff (605) 356-2679
--	--	---	---

**RESPONSIBILITIES**

DOT Traffic Operations Center Motor Carrier Services District 3 Office	(515) 233-7900

Nebraska Department of Roads District 3	(402) 370-3470

South Dakota Department of Transportation Yankton Area	(605) 668-2929

Iowa State Patrol (Storm Lake)	(712) 732-1341

Nebraska State Patrol	(402) 471-4545

South Dakota State Patrol	(605) 356-3581

Woodbury County, IA Sheriff	(712) 279-6010

Dakota County, NE Communications Center (Sheriff)	(402) 494-7555

<b>LOCAL DETOUR 1/7</b>	<b>GLOBAL DETOUR 2/7</b>	<b>CRITICAL LOCATIONS 3/7</b>	<b>RESPONSE PLAN 4/7</b>	<b>AGENCY CONTACTS 5/7</b>	<b>DMS MESSAGES 6/7</b>	<b>TRAFFIC CONTROL 7/7</b>
---------------------------------	----------------------------------	---------------------------------------	----------------------------------	------------------------------------	---------------------------------	------------------------------------

<b>FREEWAY DIVERSION</b>	<b>WOODBURY COUNTY IOWA</b>	<b>I-29 SOUTHBOUND</b>	<b>FROM:</b> Exit 147A Floyd Blvd. <b>TO:</b> Exit 144AB I-129/US-20/ US 75	<b>PLAN 2016 5A/7</b>
<b>CRITICAL CONTACTS</b>				

Union County, SD Sheriff	(605) 356-2679

<b>LOCAL DETOUR 1/7</b>	<b>GLOBAL DETOUR 2/7</b>	<b>CRITICAL LOCATIONS 3/7</b>	<b>RESPONSE PLAN 4/7</b>	<b>AGENCY CONTACTS 5/7</b>	<b>DMS MESSAGES 6/7</b>	<b>TRAFFIC CONTROL 7/7</b>
---------------------------------	----------------------------------	---------------------------------------	----------------------------------	------------------------------------	---------------------------------	------------------------------------



<b>FREEWAY DIVERSION</b>	<b>WOODBURY COUNTY IOWA</b>	<b>I-29 SOUTHBOUND</b>	<b>FROM:</b> Exit 147A Floyd Blvd. <b>TO:</b> Exit 144AB I-129/US-20/ US 75	<b>PLAN 2016 5B/7</b>
<b>ADDITIONAL CONTACT INFORMATION</b>				

DOT Traffic Operations Center Motor Carrier Services District 3 Office	
	(515) 233-7900

Nebraska Department of Roads District 3	
	(402) 370-3470

South Dakota Department of Transportation Yankton Area	
	(605) 668-2929

Iowa State Patrol (Storm Lake)	
	(712) 732-1341

Nebraska State Patrol	
	(402) 471-4545

South Dakota State Patrol	
	(605) 356-3581

Woodbury County, IA Sheriff	
	(712) 279-6010

Dakota County, NE Communications Center (Sheriff)	
	(402) 494-7555

Union County, SD Sheriff	
	(605) 356-2679

<b>LOCAL DETOUR 1/7</b>	<b>GLOBAL DETOUR 2/7</b>	<b>CRITICAL LOCATIONS 3/7</b>	<b>RESPONSE PLAN 4/7</b>	<b>AGENCY CONTACTS 5/7</b>	<b>DMS MESSAGES 6/7</b>	<b>TRAFFIC CONTROL 7/7</b>
---------------------------------	----------------------------------	---------------------------------------	----------------------------------	------------------------------------	---------------------------------	------------------------------------

<b>FREEWAY DIVERSION</b>	<b>WOODBURY COUNTY IOWA</b>	<b>I-29 SOUTHBOUND</b>	<b>FROM:</b> Exit 147A Floyd Blvd. <b>TO:</b> Exit 144AB I-129/US-20/ US 75	<b>PLAN 2016 6/7</b>
<b>DMS MESSAGES</b>				

<b>LOCAL PRIMARY</b>	<b>Sign Location</b>	<b>Page 1</b>	<b>Page 2</b>
	<b>NO DMS AVAILABLE</b>		

<b>LOCAL SECONDARY</b>	<b>Sign Location</b>	<b>Page 1</b>	<b>Page 2</b>
	<b>NO DMS AVAILABLE</b>		

<b>GLOBAL</b>	<b>Sign Location</b>	<b>Page 1</b>	<b>Page 2</b>
	SC-I-29 SB @ Hamilton Blvd (Overhead)	I-29 S CLOSED AT FLOYD BLVD AT EXIT 147A	TAKE EXIT 149 US 77 S TO 20/75/I-29 EAST
	SC-US 20 WB @ Buchanon Ave (Overhead)	I- I-29 S CLOSED AT FLOYD BLVD AT EXIT 147A	
	SC-US 20 WB @ Lake Port (Side-Mount)	I-29 S CLOSED EXIT 147A	

<b>LOCAL DETOUR 1/7</b>	<b>GLOBAL DETOUR 2/7</b>	<b>CRITICAL LOCATIONS 3/7</b>	<b>RESPONSE PLAN 4/7</b>	<b>AGENCY CONTACTS 5/7</b>	<b>DMS MESSAGES 6/7</b>	<b>TRAFFIC CONTROL 7/7</b>
---------------------------------	----------------------------------	---------------------------------------	----------------------------------	------------------------------------	---------------------------------	------------------------------------



<b>FREEWAY DIVERSION</b>	<b>WOODBURY COUNTY IOWA</b>	<b>I-29 SOUTHBOUND</b>	<b>FROM:</b> Exit 147A Floyd Blvd. <b>TO:</b> Exit 144AB I-129/US-20/ US 75	<b>PLAN 2016 7/7</b>
<b>TRAFFIC CONTROL</b>				

<b>LOCATION</b>	<b>INITIAL ACTION/RESOURCE</b>	<b>EXTENDED ACTION/RESOURCE</b>
-----------------	--------------------------------	---------------------------------

**Local Diversion - Primary**

SB I-29 Exit 149 SB	Law enforcement traffic control as needed	Install Temporary Diversion Trailblazing Signage as Needed
US 77 Interchange to EB I-129 EB	Law enforcement traffic control as needed	Install Temporary Diversion Trailblazing Signage as Needed
I-129 Exit 1A SB	Law enforcement traffic control as needed	Install Temporary Diversion Trailblazing Signage as Needed
I-29 On Ramp 1A	Law enforcement traffic control as needed	Install Temporary Diversion Trailblazing Signage as Needed

**Local Diversion - Secondary**

<b>NO TRAFFIC CONTROL</b>
---------------------------

**Global Diversion**

<b>NO TRAFFIC CONTROL</b>
---------------------------

<b>LOCAL DETOUR 1/7</b>	<b>GLOBAL DETOUR 2/7</b>	<b>CRITICAL LOCATIONS 3/7</b>	<b>RESPONSE PLAN 4/7</b>	<b>AGENCY CONTACTS 5/7</b>	<b>DMS MESSAGES 6/7</b>	<b>TRAFFIC CONTROL 7/7</b>
---------------------------------	----------------------------------	---------------------------------------	----------------------------------	------------------------------------	---------------------------------	------------------------------------