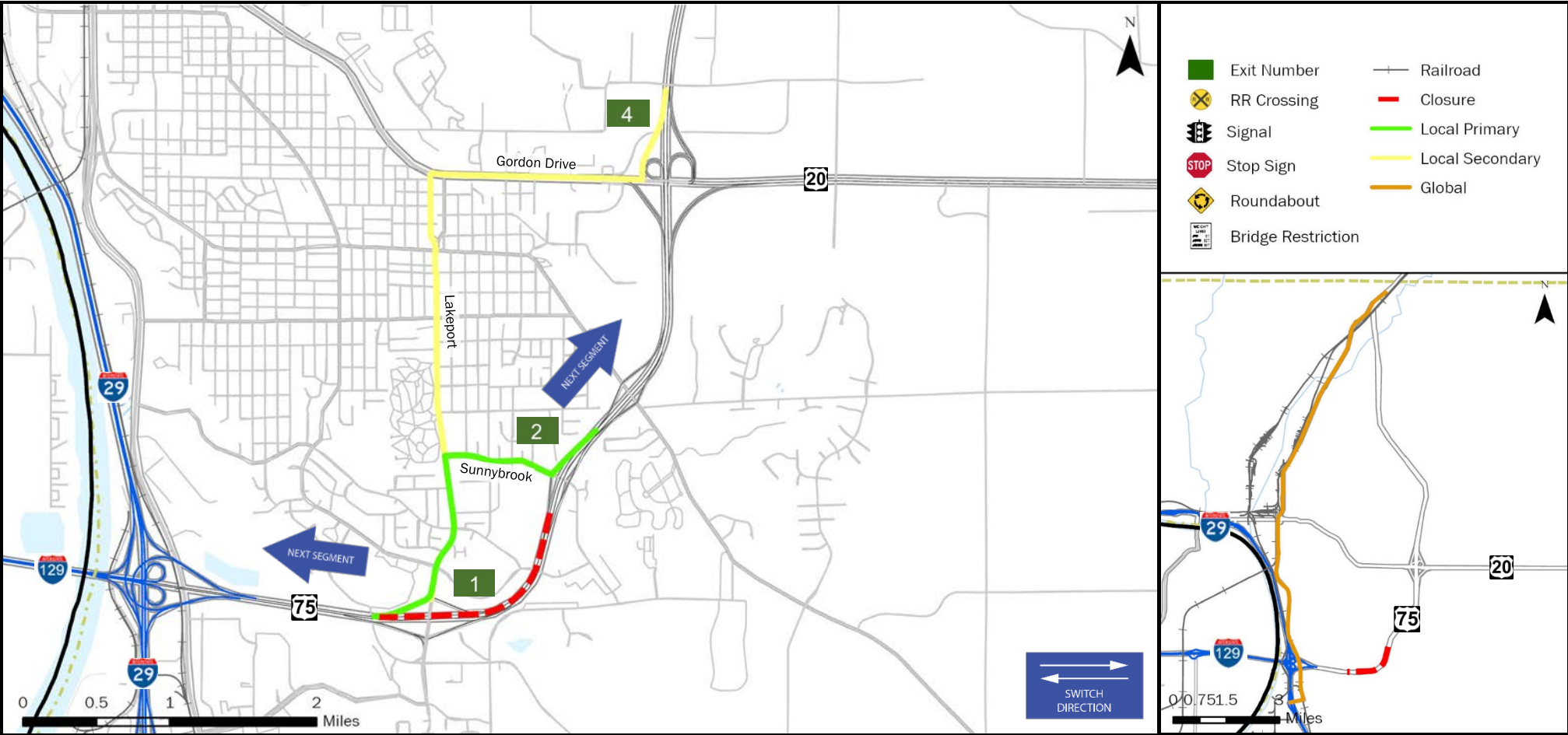
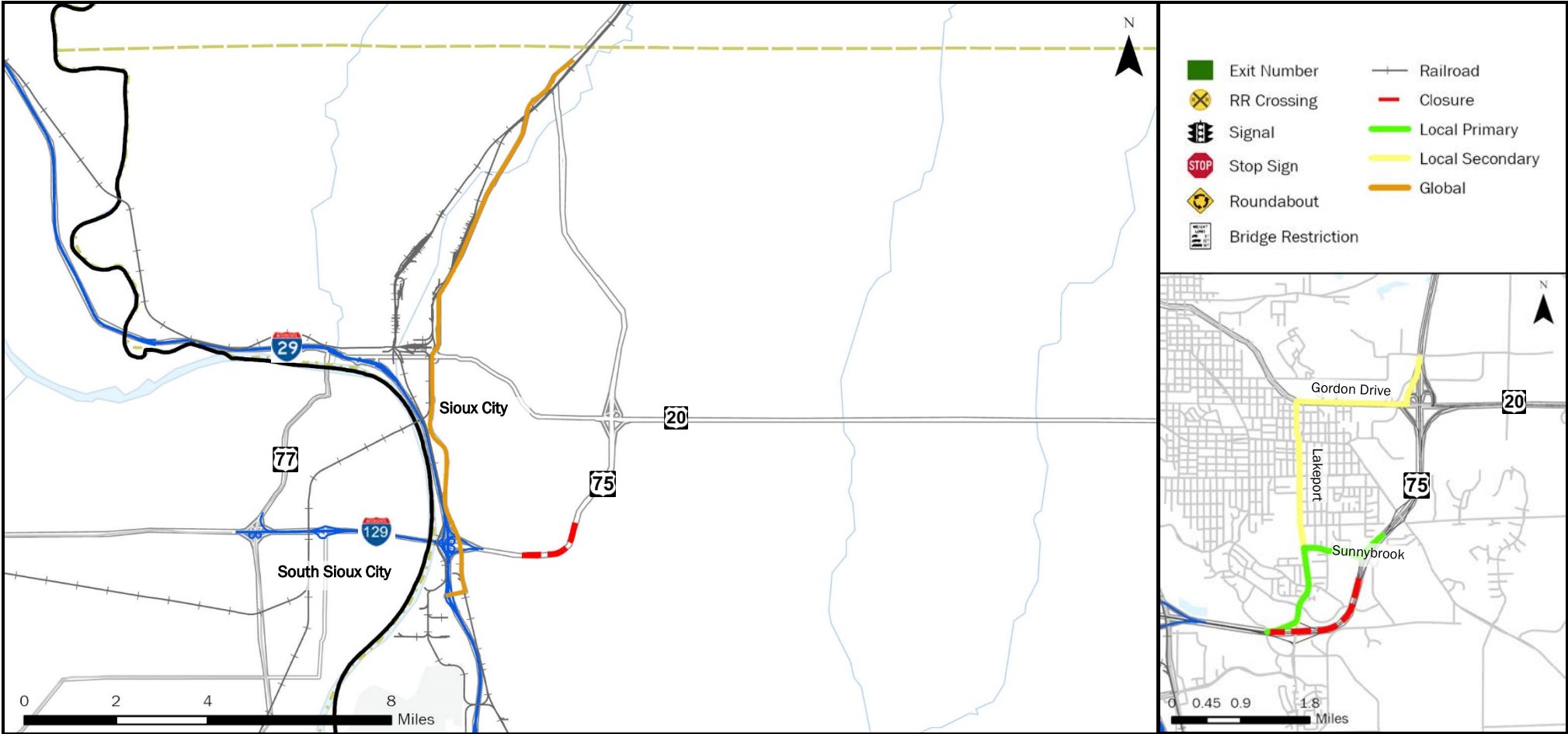


FREEWAY DIVERSION	WOODBURY COUNTY IOWA	HWY 20/US 75 SOUTHBOUND	FROM: Exit 2 Sunnybrook Dr	TO: Exit 1 S Lakeport St (Iowa)	PLAN 2104 1/7
------------------------------	---------------------------------	------------------------------------	--------------------------------------	-------------------------------------------	--------------------------



CRITICAL LOCATIONS TO MONITOR FOR LOCAL PRIMARY	AGENCIES TO NOTIFY	Iowa DOT TMC: 515-237-3300
WB US-20/US-75 Exit 2 S. Lakeport St. & Sunnybrook Dr. EB US-20/US-75 On Ramp 1	DOT Traffic Operations Center Motor Carrier Services District 3 Office Nebraska Department of Roads District 3 South Dakota Department of Transportation Yankton Area Iowa State Patrol (Storm Lake) Nebraska State Patrol South Dakota State Patrol Woodbury County, IA Sheriff Dakota County, NE Communications Center (Sheriff) Union County, SD Sheriff	(515) 233-7900 (402) 370-3470 (605) 668-2929 (712) 732-1341 (402) 471-4545 (605) 356-3581 (712) 279-6010 (402) 494-7555 (605) 356-2679

LOCAL DETOUR 1/7	GLOBAL DETOUR 2/7	CRITICAL LOCATIONS 3/7	RESPONSE PLAN 4/7	AGENCY CONTACTS 5/7	DMS MESSAGES 6/7	TRAFFIC CONTROL 7/7
---------------------------------	----------------------------------	---------------------------------------	----------------------------------	------------------------------------	---------------------------------	------------------------------------



CRITICAL LOCATIONS TO MONITOR FOR GLOBAL	AGENCIES TO NOTIFY	Iowa DOT TMC: 515-237-3300
	DOT Traffic Operations Center Motor Carrier Services District 3 Office Nebraska Department of Roads District 3 South Dakota Department of Transportation Yankton Area Iowa State Patrol (Storm Lake) Nebraska State Patrol South Dakota State Patrol Woodbury County, IA Sheriff Dakota County, NE Communications Center (Sheriff) Union County, SD Sheriff	(515) 233-7900 (402) 370-3470 (605) 668-2929 (712) 732-1341 (402) 471-4545 (605) 356-3581 (712) 279-6010 (402) 494-7555 (605) 356-2679

FREEWAY DIVERSION	WOODBURY COUNTY IOWA	HWY 20/US 75 NORTHBOUND	FROM: Exit 2 Sunnybrook Dr TO: Exit 1 S Lakeport St (Iowa)	PLAN 2104 3/7
------------------------------	---------------------------------	------------------------------------	-----------------------------------------------------------------------------	--------------------------

CRITICAL AREAS TO MONITOR

LOCATION	EXIT	SITUATION	RESPONSE
-----------------	-------------	------------------	-----------------

Local Diversion - Primary

WB US-20/US-75 Exit 2	2	Traffic backing up at ramp	Deploy law enforcement to control traffic flow as needed
S. Lakeport St. & Sunnybrook Dr.		Traffic backing up at intersection	Deploy law enforcement to control traffic flow as needed
EB US-20/US-75 On Ramp 1		Traffic backing up at ramp	Deploy law enforcement to control traffic flow as needed

Local Diversion - Secondary

NO CRITICAL LOCATIONS TO MONITOR

Global Diversion

NO CRITICAL LOCATIONS TO MONITOR

LOCAL DETOUR 1/7	GLOBAL DETOUR 2/7	CRITICAL LOCATIONS 3/7	RESPONSE PLAN 4/7	AGENCY CONTACTS 5/7	DMS MESSAGES 6/7	TRAFFIC CONTROL 7/7
---------------------------------	----------------------------------	---------------------------------------	----------------------------------	------------------------------------	---------------------------------	------------------------------------

FREEWAY DIVERSION	WOODBURY COUNTY IOWA	HWY 20/US 75 NORTHBOUND	FROM: Exit 2 Sunnybrook Dr TO: Exit 1 S Lakeport St (Iowa)	PLAN 2104 4/7
ALTERNATE ROUTE RESPONSE PLAN				

Minor Impact to Traffic (Less Than 30 Minutes)

Off Peak – Shoulder Blocked	Diversion not implemented: <ul style="list-style-type: none"> • On-scene traffic control • Deploy informational DMS messaging for approaching traffic
Off Peak – Shoulder and One Lane Blocked	

Intermediate Impact to Traffic (30 Minutes to 2 Hours)

Peak Period – Shoulder Blocked	Diversion not implemented: <ul style="list-style-type: none"> • On-scene traffic control • Deploy informational DMS messaging for approaching traffic
Off Period – Shoulder and One Lane Blocked	
Peak Period – Shoulder and One Lane Blocked	Partial Diversion: <ul style="list-style-type: none"> • On-scene traffic control • Deploy informational DMS messaging for approaching traffic • Deploy DMS messaging directing through traffic to use global diversion • Monitor local diversion routes at critical locations as needed
All Lanes Blocked	Full Diversion: <ul style="list-style-type: none"> • On-scene traffic control • Deploy DMS messaging directing all traffic to use diversion routes • Deploy law enforcement to direct traffic at critical locations

Major Impact to Traffic (Greater Than 2 Hours)

Peak Period – Shoulder Blocked	Diversion not implemented: <ul style="list-style-type: none"> • On-scene traffic control • Deploy informational DMS messaging for approaching traffic
Off Period – Shoulder and One Lane Blocked	
Peak Period – Shoulder and One Lane Blocked	Partial/Discretionary Diversion: <ul style="list-style-type: none"> • Deploy cones, barricades, and other appropriate traffic control devices • Deploy informational DMS messaging for approaching traffic • Deploy DMS messaging directing through traffic to use global diversion • Divert traffic to local diversion routes at discretion of incident commander
All Lanes Blocked	Full Diversion: <ul style="list-style-type: none"> • Deploy cones, barricades, and other appropriate traffic control devices • Deploy DMS messaging directing all traffic to use diversion routes • Deploy law enforcement to direct traffic at critical locations

LOCAL DETOUR 1/7	GLOBAL DETOUR 2/7	CRITICAL LOCATIONS 3/7	RESPONSE PLAN 4/7	AGENCY CONTACTS 5/7	DMS MESSAGES 6/7	TRAFFIC CONTROL 7/7
---------------------------------	----------------------------------	---------------------------------------	----------------------------------	------------------------------------	---------------------------------	------------------------------------

FREEWAY DIVERSION	WOODBURY COUNTY IOWA	HWY 20/US 75 NORTHBOUND	FROM: 144B I-129 East Off Ramp TO: 144 I-29 North (On Ramp)	PLAN 2302 5A/7
------------------------------	---------------------------------	------------------------------------	------------------------------------------------------------------------------	---------------------------

CRITICAL CONTACTS

DOT Traffic Operations Center Motor Carrier Services District 3 Office (515) 233-7900	Nebraska Department of Roads District 3 (402) 370-3470	South Dakota Department of Transportation Yankton Area (605) 668-2929	Iowa State Patrol (Storm Lake) (712) 732-1341	Nebraska State Patrol (402) 471-4545
---------------------------------------------------------------------------------------------	-----------------------------------------------------------	--------------------------------------------------------------------------	--------------------------------------------------	-----------------------------------------

South Dakota State Patrol (605) 356-3581	Woodbury County, IA Sheriff (712) 279-6010	Dakota County, NE Communications Center (Sheriff) (402) 494-7555	Union County, SD Sheriff (605) 356-2679
---------------------------------------------	-----------------------------------------------	---------------------------------------------------------------------	--------------------------------------------

RESPONSIBILITIES

DOT Traffic Operations Center Motor Carrier Services District 3 Office	(515) 233-7900

Nebraska Department of Roads District 3	(402) 370-3470

South Dakota Department of Transportation Yankton Area	(605) 668-2929

Iowa State Patrol (Storm Lake)	(712) 732-1341

Nebraska State Patrol	(402) 471-4545

South Dakota State Patrol	(605) 356-3581

Woodbury County, IA Sheriff	(712) 279-6010

Dakota County, NE Communications Center (Sheriff)	(402) 494-7555

Union County, SD Sheriff	(605) 356-2679
--------------------------	----------------

LOCAL DETOUR 1/7	GLOBAL DETOUR 2/7	CRITICAL LOCATIONS 3/7	RESPONSE PLAN 4/7	AGENCY CONTACTS 5/7	DMS MESSAGES 6/7	TRAFFIC CONTROL 7/7
------------------------	-------------------------	------------------------------	-------------------------	---------------------------	------------------------	---------------------------

FREEWAY DIVERSION	WOODBURY COUNTY IOWA	HWY 20/US 75 NORTHBOUND	FROM: 144B I-129 East Off Ramp TO: 144 I-29 North (On Ramp)	PLAN 2302 5A/7
CRITICAL CONTACTS				

--

LOCAL DETOUR 1/7	GLOBAL DETOUR 2/7	CRITICAL LOCATIONS 3/7	RESPONSE PLAN 4/7	AGENCY CONTACTS 5/7	DMS MESSAGES 6/7	TRAFFIC CONTROL 7/7
---------------------------------	----------------------------------	---------------------------------------	----------------------------------	------------------------------------	---------------------------------	------------------------------------

FREEWAY DIVERSION	WOODBURY COUNTY IOWA	HWY 20/US 75 NORTHBOUND	FROM: Exit 2 Sunnybrook Dr TO: Exit 1 S Lakeport St (Iowa)	PLAN 2104 5B/7
ADDITIONAL CONTACT INFORMATION				

DOT Traffic Operations Center Motor Carrier Services District 3 Office	
	(515) 233-7900

Nebraska Department of Roads District 3	
	(402) 370-3470

South Dakota Department of Transportation Yankton Area	
	(605) 668-2929

Iowa State Patrol (Storm Lake)	
	(712) 732-1341

Nebraska State Patrol	
	(402) 471-4545

South Dakota State Patrol	
	(605) 356-3581

Woodbury County, IA Sheriff	
	(712) 279-6010

Dakota County, NE Communications Center (Sheriff)	
	(402) 494-7555

Union County, SD Sheriff	
	(605) 356-2679

LOCAL DETOUR 1/7	GLOBAL DETOUR 2/7	CRITICAL LOCATIONS 3/7	RESPONSE PLAN 4/7	AGENCY CONTACTS 5/7	DMS MESSAGES 6/7	TRAFFIC CONTROL 7/7
---------------------------------	----------------------------------	---------------------------------------	----------------------------------	------------------------------------	---------------------------------	------------------------------------

FREEWAY DIVERSION	WOODBURY COUNTY IOWA	HWY 20/US 75 NORTHBOUND	FROM: Exit 2 Sunnybrook Dr TO: Exit 1 S Lakeport St (Iowa)	PLAN 2104 6/7
DMS MESSAGES				

LOCAL PRIMARY	Sign Location	Page 1	Page 2
	NO DMS AVAILABLE		

LOCAL SECONDARY	Sign Location	Page 1	Page 2
	NO DMS AVAILABLE		

GLOBAL	Sign Location	Page 1	Page 2
	SC-US 20 WB @ Buchanon Ave (Overhead)	US 20/75 W CLOSED USE SUNNYBROOK DR EXIT 2	

LOCAL DETOUR 1/7	GLOBAL DETOUR 2/7	CRITICAL LOCATIONS 3/7	RESPONSE PLAN 4/7	AGENCY CONTACTS 5/7	DMS MESSAGES 6/7	TRAFFIC CONTROL 7/7
---------------------------------	----------------------------------	---------------------------------------	----------------------------------	------------------------------------	---------------------------------	------------------------------------

FREEWAY DIVERSION	WOODBURY COUNTY IOWA	HWY 20/US 75 NORTHBOUND	FROM: Exit 2 Sunnybrook Dr TO: Exit 1 S Lakeport St (Iowa)	PLAN 2104 7/7
TRAFFIC CONTROL				

LOCATION	INITIAL ACTION/RESOURCE	EXTENDED ACTION/RESOURCE
----------	-------------------------	--------------------------

Local Diversion - Primary

WB US-20/US-75 Exit 2	Law enforcement traffic control as needed	Install Temporary Diversion Trailblazing Signage as Needed
S. Lakeport St. & Sunnybrook Dr.	Law enforcement traffic control as needed	Install Temporary Diversion Trailblazing Signage as Needed
EB US-20/US-75 On Ramp 1	Law enforcement traffic control as needed	Install Temporary Diversion Trailblazing Signage as Needed

Local Diversion - Secondary

NO TRAFFIC CONTROL

Global Diversion

NO TRAFFIC CONTROL

LOCAL DETOUR 1/7	GLOBAL DETOUR 2/7	CRITICAL LOCATIONS 3/7	RESPONSE PLAN 4/7	AGENCY CONTACTS 5/7	DMS MESSAGES 6/7	TRAFFIC CONTROL 7/7
---------------------------------	----------------------------------	---------------------------------------	----------------------------------	------------------------------------	---------------------------------	------------------------------------