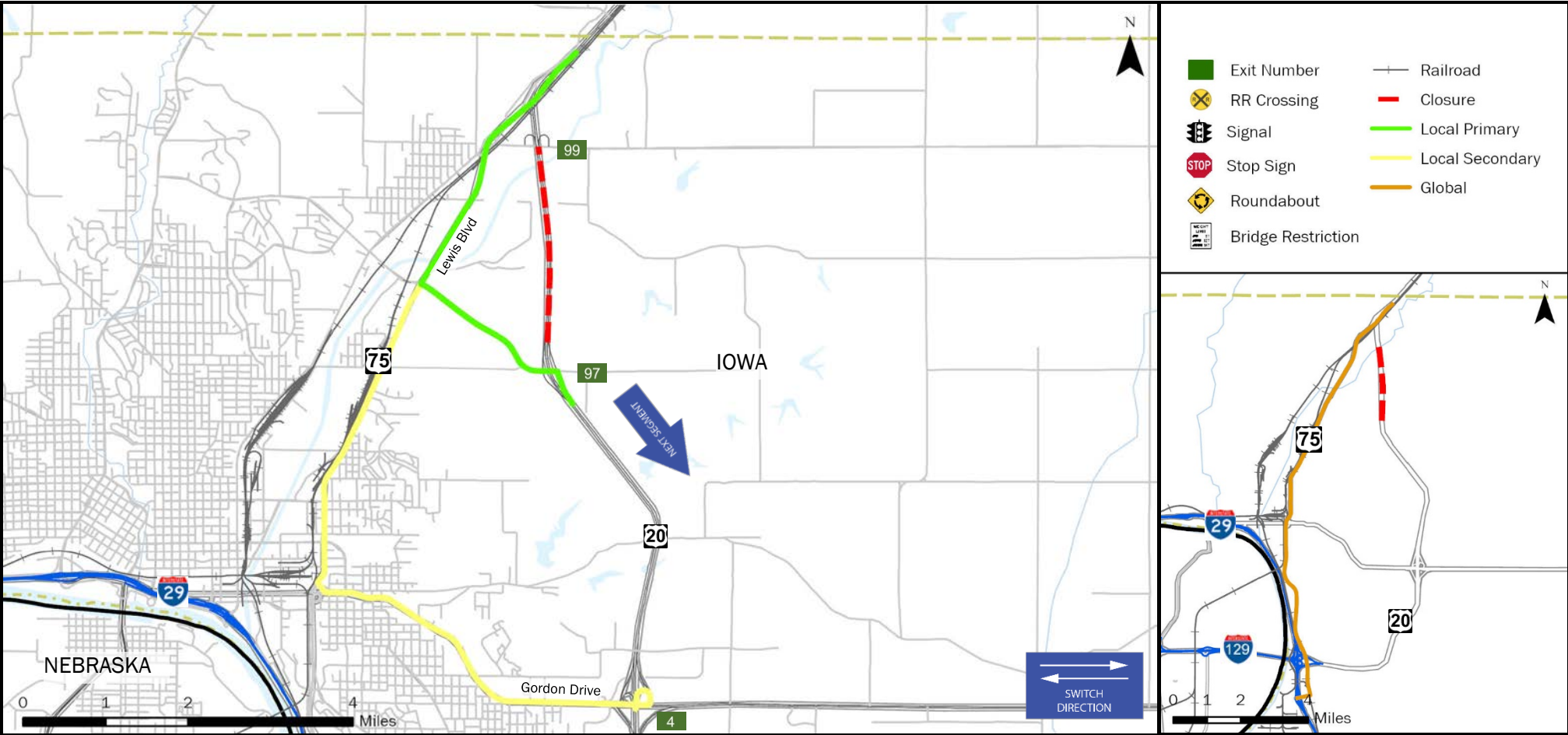


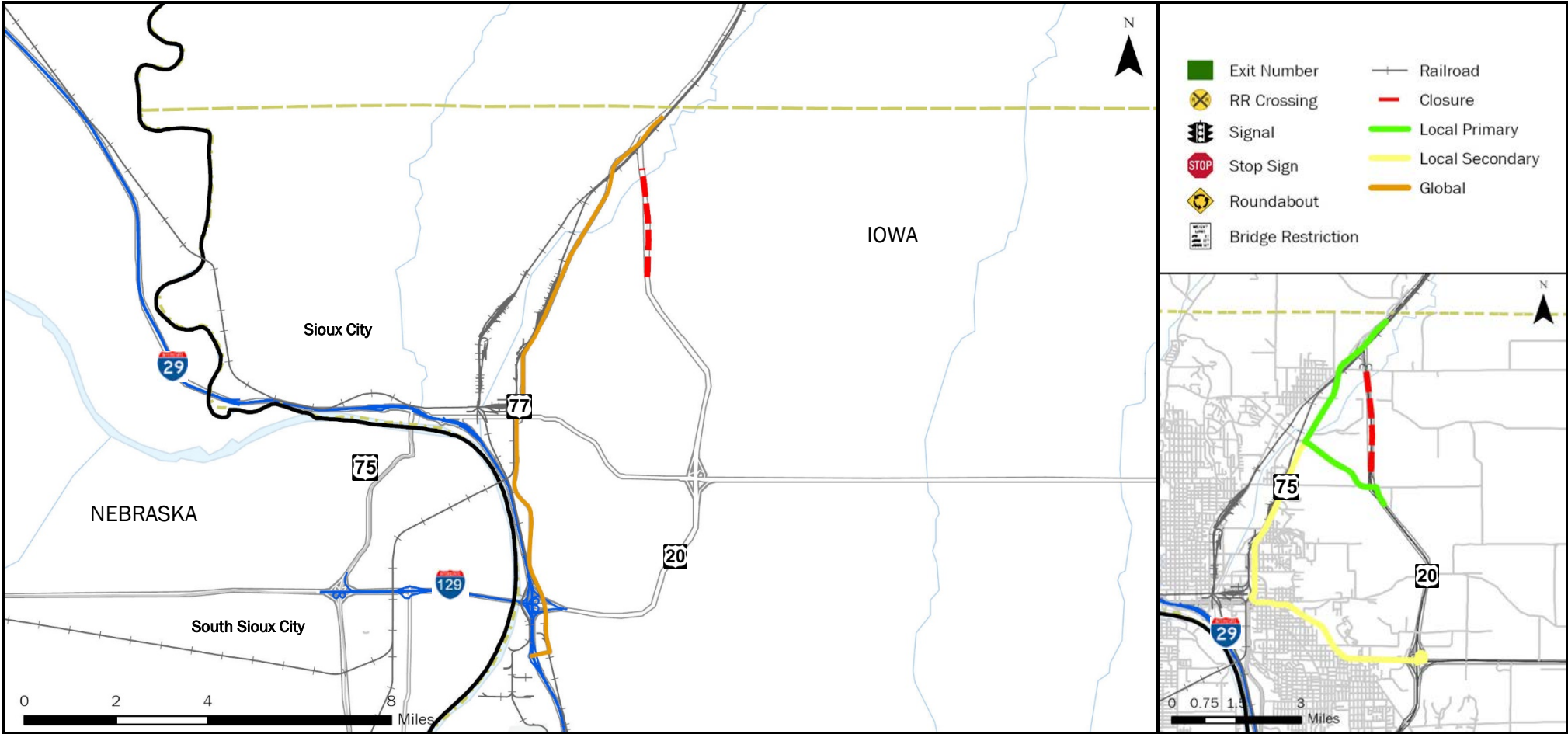
FREEWAY DIVERSION	WOODBURY COUNTY IOWA	HWY 20/US 75 NORTHBOUND	FROM: Exit 97 US-75/28th St	TO: Exit 99 Hwy D12/ 46th St.	PLAN 2111 1/7
--------------------------	-----------------------------	--------------------------------	---------------------------------------	---	--------------------------------



CRITICAL LOCATIONS TO MONITOR FOR LOCAL PRIMARY	AGENCIES TO NOTIFY	Iowa DOT TMC: 515-237-3300
NB US-75 Exit 97 US-75 BUS & Outer Dr. N NB US-75 On Ramp 99	DOT Traffic Operations Center Motor Carrier Services District 3 Office Nebraska Department of Roads District 3 South Dakota Department of Transportation Yankton Area Iowa State Patrol (Storm Lake) Nebraska State Patrol South Dakota State Patrol Woodbury County, IA Sheriff Dakota County, NE Communications Center (Sheriff) Union County, SD Sheriff	(515) 233-7900 (402) 370-3470 (605) 668-2929 (712) 732-1341 (402) 471-4545 (605) 356-3581 (712) 279-6010 (402) 494-7555 (605) 356-2679

LOCAL DETOUR 1/7	GLOBAL DETOUR 2/7	CRITICAL LOCATIONS 3/7	RESPONSE PLAN 4/7	AGENCY CONTACTS 5/7	DMS MESSAGES 6/7	TRAFFIC CONTROL 7/7
-----------------------------------	------------------------------------	---	------------------------------------	--------------------------------------	-----------------------------------	--------------------------------------

FREEWAY DIVERSION	WOODBURY COUNTY IOWA	HWY 20/US 75 NORTHBOUND	FROM: Exit 97 US-75/28th St	TO: Exit 99 Hwy D12/ 46th St.	PLAN 2111 2/7
------------------------------	---------------------------------	------------------------------------	---------------------------------------	---	--------------------------



CRITICAL LOCATIONS TO MONITOR FOR GLOBAL	AGENCIES TO NOTIFY	Iowa DOT TMC: 515-237-3300
	DOT Traffic Operations Center Motor Carrier Services District 3 Office (515) 233-7900 Nebraska Department of Roads District 3 (402) 370-3470 South Dakota Department of Transportation Yankton Area (605) 668-2929 Iowa State Patrol (Storm Lake) (712) 732-1341 Nebraska State Patrol (402) 471-4545 South Dakota State Patrol (605) 356-3581 Woodbury County, IA Sheriff (712) 279-6010 Dakota County, NE Communications Center (Sheriff) (402) 494-7555 Union County, SD Sheriff (605) 356-2679	

LOCAL DETOUR 1/7	GLOBAL DETOUR 2/7	CRITICAL LOCATIONS 3/7	RESPONSE PLAN 4/7	AGENCY CONTACTS 5/7	DMS MESSAGES 6/7	TRAFFIC CONTROL 7/7
---------------------------------	----------------------------------	---------------------------------------	----------------------------------	------------------------------------	---------------------------------	------------------------------------

FREEWAY DIVERSION	WOODBURY COUNTY IOWA	HWY 20/US 75 NORTHBOUND	FROM: 97 US-75/28th St TO: 99 Hwy D12/ 46th St.	PLAN 2111 3/7
------------------------------	---------------------------------	------------------------------------	--	--------------------------

CRITICAL AREAS TO MONITOR

LOCATION	EXIT	SITUATION	RESPONSE
----------	------	-----------	----------

Local Diversion - Primary

NB US-75 Exit 97	97	Traffic backing up at ramp	Deploy law enforcement to control traffic flow as needed
US-75 BUS & Outer Dr. N		Traffic backing up at intersection	Deploy law enforcement to control traffic flow as needed
NB US-75 On Ramp 99		Traffic backing up at ramp	Deploy law enforcement to control traffic flow as needed

Local Diversion - Secondary

NO CRITICAL LOCATIONS TO MONITOR

Global Diversion

NO CRITICAL LOCATIONS TO MONITOR

LOCAL DETOUR 1/7	GLOBAL DETOUR 2/7	CRITICAL LOCATIONS 3/7	RESPONSE PLAN 4/7	AGENCY CONTACTS 5/7	DMS MESSAGES 6/7	TRAFFIC CONTROL 7/7
---------------------------------	----------------------------------	---------------------------------------	----------------------------------	------------------------------------	---------------------------------	------------------------------------

FREEWAY DIVERSION	WOODBURY COUNTY IOWA	HWY 20/US 75 NORTHBOUND	FROM: 97 US-75/28th St TO: 99 Hwy D12/ 46th St.	PLAN 2111 4/7
ALTERNATE ROUTE RESPONSE PLAN				

Minor Impact to Traffic (Less Than 30 Minutes)

Off Peak – Shoulder Blocked	Diversion not implemented: <ul style="list-style-type: none"> • On-scene traffic control • Deploy informational DMS messaging for approaching traffic
Off Peak – Shoulder and One Lane Blocked	

Intermediate Impact to Traffic (30 Minutes to 2 Hours)

Peak Period – Shoulder Blocked	Diversion not implemented: <ul style="list-style-type: none"> • On-scene traffic control • Deploy informational DMS messaging for approaching traffic
Off Period – Shoulder and One Lane Blocked	
Peak Period – Shoulder and One Lane Blocked	Partial Diversion: <ul style="list-style-type: none"> • On-scene traffic control • Deploy informational DMS messaging for approaching traffic • Deploy DMS messaging directing through traffic to use global diversion • Monitor local diversion routes at critical locations as needed
All Lanes Blocked	Full Diversion: <ul style="list-style-type: none"> • On-scene traffic control • Deploy DMS messaging directing all traffic to use diversion routes • Deploy law enforcement to direct traffic at critical locations

Major Impact to Traffic (Greater Than 2 Hours)

Peak Period – Shoulder Blocked	Diversion not implemented: <ul style="list-style-type: none"> • On-scene traffic control • Deploy informational DMS messaging for approaching traffic
Off Period – Shoulder and One Lane Blocked	
Peak Period – Shoulder and One Lane Blocked	Partial/Discretionary Diversion: <ul style="list-style-type: none"> • Deploy cones, barricades, and other appropriate traffic control devices • Deploy informational DMS messaging for approaching traffic • Deploy DMS messaging directing through traffic to use global diversion • Divert traffic to local diversion routes at discretion of incident commander
All Lanes Blocked	Full Diversion: <ul style="list-style-type: none"> • Deploy cones, barricades, and other appropriate traffic control devices • Deploy DMS messaging directing all traffic to use diversion routes • Deploy law enforcement to direct traffic at critical locations

LOCAL DETOUR 1/7	GLOBAL DETOUR 2/7	CRITICAL LOCATIONS 3/7	RESPONSE PLAN 4/7	AGENCY CONTACTS 5/7	DMS MESSAGES 6/7	TRAFFIC CONTROL 7/7
---------------------------------	----------------------------------	---------------------------------------	----------------------------------	------------------------------------	---------------------------------	------------------------------------

FREEWAY DIVERSION	WOODBURY COUNTY IOWA	I-29/I-129/US 75 INTERCHANGE NORTHBOUND	FROM: 144 I-29 North (On Ramp) TO: 144B I-129 East Off Ramp	PLAN 2111 5A/7
------------------------------	---------------------------------	--	--	---------------------------

CRITICAL CONTACTS

DOT Traffic Operations Center Motor Carrier Services District 3 Office (515) 233-7900	Nebraska Department of Roads District 3 (402) 370-3470	South Dakota Department of Transportation Yankton Area (605) 668-2929	Iowa State Patrol (Storm Lake) (712) 732-1341	Nebraska State Patrol (402) 471-4545
---	---	--	--	---

South Dakota State Patrol (605) 356-3581	Woodbury County, IA Sheriff (712) 279-6010	Dakota County, NE Communications Center (Sheriff) (402) 494-7555	Union County, SD Sheriff (605) 356-2679
---	---	---	--

RESPONSIBILITIES

DOT Traffic Operations Center Motor Carrier Services District 3 Office	(515) 233-7900

Nebraska Department of Roads District 3	(402) 370-3470

South Dakota Department of Transportation Yankton Area	(605) 668-2929

Iowa State Patrol (Storm Lake)	(712) 732-1341

Nebraska State Patrol	(402) 471-4545

South Dakota State Patrol	(605) 356-3581

Woodbury County, IA Sheriff	(712) 279-6010

Dakota County, NE Communications Center (Sheriff)	(402) 494-7555

LOCAL DETOUR 1/7	GLOBAL DETOUR 2/7	CRITICAL LOCATIONS 3/7	RESPONSE PLAN 4/7	AGENCY CONTACTS 5/7	DMS MESSAGES 6/7	TRAFFIC CONTROL 7/7
------------------------	-------------------------	------------------------------	-------------------------	---------------------------	------------------------	---------------------------

Iowa DOT TMC: 515-237-3300

ENSURE ALL OVERWEIGHT AND OVERSIZE VEHICLES ARE PARKED SAFELY

FREEWAY DIVERSION	WOODBURY COUNTY IOWA	I-29/I-129/US 75 INTERCHANGE NORTHBOUND	FROM: 144 I-29 North (On Ramp) TO: 144B I-129 East Off Ramp	PLAN 2111 5A/7
CRITICAL CONTACTS				

Union County, SD Sheriff	(605) 356-2679

LOCAL DETOUR 1/7	GLOBAL DETOUR 2/7	CRITICAL LOCATIONS 3/7	RESPONSE PLAN 4/7	AGENCY CONTACTS 5/7	DMS MESSAGES 6/7	TRAFFIC CONTROL 7/7
---------------------------------	----------------------------------	---------------------------------------	----------------------------------	------------------------------------	---------------------------------	------------------------------------

FREEWAY DIVERSION	WOODBURY COUNTY IOWA	I-29/I-129/US 75 INTERCHANGE NORTHBOUND	FROM: 144 I-29 North (On Ramp) TO: 144B I-129 East Off Ramp	PLAN 2111 5B/7
ADDITIONAL CONTACT INFORMATION				

Iowa DOT Traffic Operations Center Motor Carrier Services District 3 Office	
District 3 Office	(515) 233-7900

Nebraska Department of Roads District 3	
Nebraska Department of Roads District 3	(402) 370-3470

South Dakota Department of Transportation Yankton Area	
South Dakota Department of Transportation Yankton Area	(605) 668-2929

Iowa State Patrol (Storm Lake)	
Iowa State Patrol (Storm Lake)	(712) 732-1341

Nebraska State Patrol	
Nebraska State Patrol	(402) 471-4545

South Dakota State Patrol	
South Dakota State Patrol	(605) 356-3581

Woodbury County, IA Sheriff	
Woodbury County, IA Sheriff	(712) 279-6010

Dakota County, NE Communications Center (Sheriff)	
Dakota County, NE Communications Center (Sheriff)	(402) 494-7555

Union County, SD Sheriff	
Union County, SD Sheriff	(605) 356-2679

LOCAL DETOUR 1/7	GLOBAL DETOUR 2/7	CRITICAL LOCATIONS 3/7	RESPONSE PLAN 4/7	AGENCY CONTACTS 5/7	DMS MESSAGES 6/7	TRAFFIC CONTROL 7/7
---------------------------------	----------------------------------	---------------------------------------	----------------------------------	------------------------------------	---------------------------------	------------------------------------

FREEWAY DIVERSION	WOODBURY COUNTY IOWA	I-29/I-129/US 75 INTERCHANGE NORTHBOUND	FROM: 144 I-29 North (On Ramp) TO: 144B I-129 East Off Ramp	PLAN 2111 6/7
DMS MESSAGES				

LOCAL PRIMARY	Sign Location	Page 1	Page 2
	NO DMS AVAILABLE		

LOCAL SECONDARY	Sign Location	Page 1	Page 2
	NO DMS AVAILABLE		

GLOBAL	Sign Location	Page 1	Page 2
	SC-US 20 WB @ Buchanon Ave (Overhead)	US 75 N CLOSED AT US 20 USE ALT ROUTE	
	Nebraska I-129 EB @ MP 0.9 (Overhead)	CONTACT NDOR	

LOCAL DETOUR 1/7	GLOBAL DETOUR 2/7	CRITICAL LOCATIONS 3/7	RESPONSE PLAN 4/7	AGENCY CONTACTS 5/7	DMS MESSAGES 6/7	TRAFFIC CONTROL 7/7
---------------------------------	----------------------------------	---------------------------------------	----------------------------------	------------------------------------	---------------------------------	------------------------------------

FREEWAY DIVERSION	WOODBURY COUNTY IOWA	HWY 20/US 75 NORTHBOUND	FROM: 97 US-75/28th St TO: 99 Hwy D12/ 46th St.	PLAN 2111 7/7
TRAFFIC CONTROL				

LOCATION	INITIAL ACTION/RESOURCE	EXTENDED ACTION/RESOURCE
-----------------	--------------------------------	---------------------------------

Local Diversion - Primary

NB US-75 Exit 97	Law enforcement traffic control as needed	Install Temporary Diversion Trailblazing Signage as Needed
US-75 BUS & Outer Dr. N	Law enforcement traffic control as needed	Install Temporary Diversion Trailblazing Signage as Needed
NB US-75 On Ramp 99	Law enforcement traffic control as needed	Install Temporary Diversion Trailblazing Signage as Needed

Local Diversion - Secondary

NO TRAFFIC CONTROL

Global Diversion

NO TRAFFIC CONTROL

LOCAL DETOUR 1/7	GLOBAL DETOUR 2/7	CRITICAL LOCATIONS 3/7	RESPONSE PLAN 4/7	AGENCY CONTACTS 5/7	DMS MESSAGES 6/7	TRAFFIC CONTROL 7/7
---------------------------------	----------------------------------	---------------------------------------	----------------------------------	------------------------------------	---------------------------------	------------------------------------