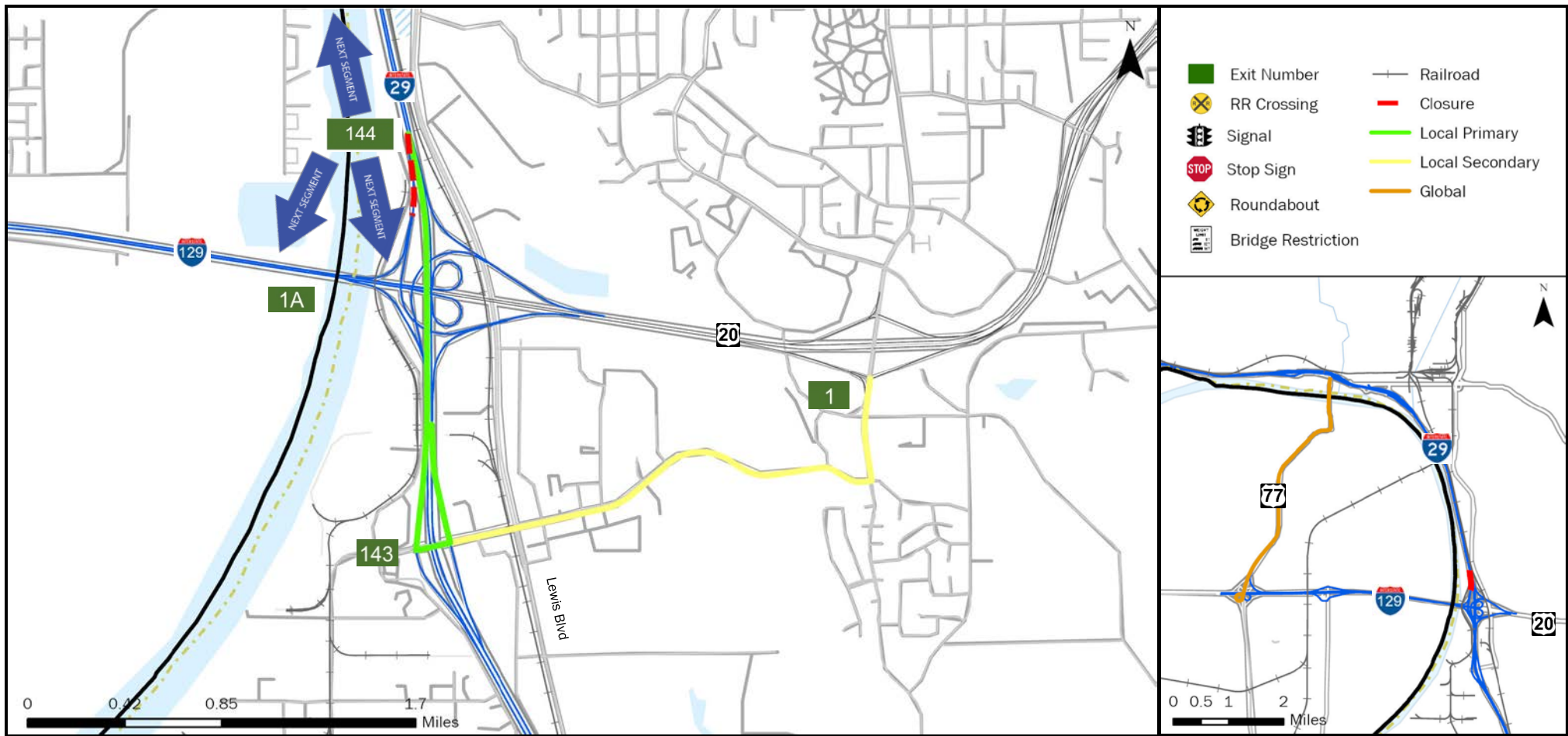


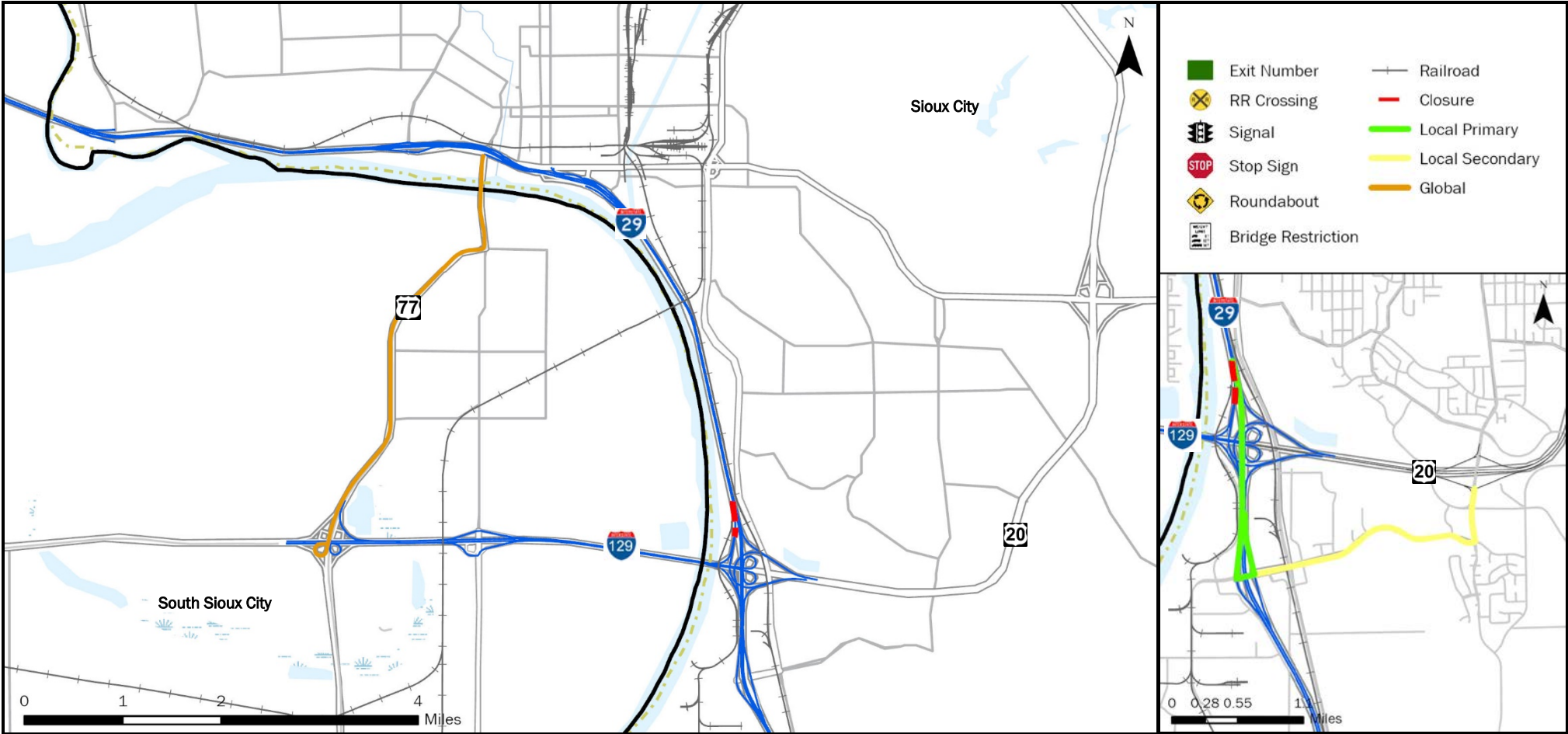
FREEWAY DIVERSION	WOODBURY COUNTY IOWA	I-29/I-129/US 75 INTERCHANGE	FROM: Exit 144 I-29 South	TO: I-129 West/ US 75/ US 20 East/West Split	PLAN 2311 1/7
------------------------------	---------------------------------	---	-------------------------------------	---	--------------------------



CRITICAL LOCATIONS TO MONITOR FOR LOCAL PRIMARY	AGENCIES TO NOTIFY	Iowa DOT TMC: 515-237-3300
SB I-29 Exit 143 Singing Hills Blvd. & S. Lakeport St.	DOT Traffic Operations Center Motor Carrier Services District 3 Office	(515) 233-7900
	Nebraska Department of Roads District 3	(402) 370-3470
	South Dakota Department of Transportation Yankton Area	(605) 668-2929
	Iowa State Patrol (Storm Lake)	(712) 732-1341
	Nebraska State Patrol	(402) 471-4545
	South Dakota State Patrol	(605) 356-3581
	Woodbury County, IA Sheriff	(712) 279-6010
	Dakota County, NE Communications Center (Sheriff)	(402) 494-7555
	Union County, SD Sheriff	(605) 356-2679

LOCAL DETOUR 1/7	GLOBAL DETOUR 2/7	CRITICAL LOCATIONS 3/7	RESPONSE PLAN 4/7	AGENCY CONTACTS 5/7	DMS MESSAGES 6/7	TRAFFIC CONTROL 7/7
---------------------------------	----------------------------------	---------------------------------------	----------------------------------	------------------------------------	---------------------------------	------------------------------------

FREEWAY DIVERSION	WOODBURY COUNTY IOWA	I-29/I-129/US 75 INTERCHANGE	FROM: Exit 144 I-29 South	TO: Exit I-129 West/ US 75/ US 20 East/West Split	PLAN 2311 2/7
------------------------------	---------------------------------	---	-------------------------------------	--	--------------------------



CRITICAL LOCATIONS TO MONITOR FOR GLOBAL	AGENCIES TO NOTIFY	Iowa DOT TMC: 515-237-3300
	DOT Traffic Operations Center Motor Carrier Services District 3 Office (515) 233-7900 Nebraska Department of Roads District 3 (402) 370-3470 South Dakota Department of Transportation Yankton Area (605) 668-2929 Iowa State Patrol (Storm Lake) (712) 732-1341 Nebraska State Patrol (402) 471-4545 South Dakota State Patrol (605) 356-3581 Woodbury County, IA Sheriff (712) 279-6010 Dakota County, NE Communications Center (Sheriff) (402) 494-7555 Union County, SD Sheriff (605) 356-2679	

LOCAL DETOUR 1/7	GLOBAL DETOUR 2/7	CRITICAL LOCATIONS 3/7	RESPONSE PLAN 4/7	AGENCY CONTACTS 5/7	DMS MESSAGES 6/7	TRAFFIC CONTROL 7/7
---------------------------------	----------------------------------	---------------------------------------	----------------------------------	------------------------------------	---------------------------------	------------------------------------

FREEWAY DIVERSION	WOODBURY COUNTY IOWA	I-29/I-129/US 75 INTERCHANGE	FROM: Exit 144 I-29 South TO: I-129 West/ US 75/ US 20 East/West Split	PLAN 2311 3/7
------------------------------	---------------------------------	---	--	--------------------------

CRITICAL AREAS TO MONITOR

LOCATION	EXIT	SITUATION	RESPONSE
----------	------	-----------	----------

Local Diversion - Primary

SB I-29 Exit 143	143	Traffic backing up at ramp	Use secondary route Deploy law enforcement to control traffic flow as needed
Singing Hills Blvd. & S. Lakeport St.		Traffic backing up at intersection	Use secondary route Deploy law enforcement to control traffic flow as needed

Local Diversion - Secondary

NO CRITICAL LOCATIONS TO MONITOR

Global Diversion

NO CRITICAL LOCATIONS TO MONITOR

LOCAL DETOUR 1/7	GLOBAL DETOUR 2/7	CRITICAL LOCATIONS 3/7	RESPONSE PLAN 4/7	AGENCY CONTACTS 5/7	DMS MESSAGES 6/7	TRAFFIC CONTROL 7/7
---------------------------------	----------------------------------	---------------------------------------	----------------------------------	------------------------------------	---------------------------------	------------------------------------

FREEWAY DIVERSION	WOODBURY COUNTY IOWA	I-29/I-129/US 75 INTERCHANGE	FROM: Exit 144 I-29 South TO: I-129 West/ US 75/ US 20 East/West Split	PLAN 2311 4/7
ALTERNATE ROUTE RESPONSE PLAN				

Minor Impact to Traffic (Less Than 30 Minutes)

Off Peak – Shoulder Blocked	Diversion not implemented: <ul style="list-style-type: none"> • On-scene traffic control • Deploy informational DMS messaging for approaching traffic
Off Peak – Shoulder and One Lane Blocked	

Intermediate Impact to Traffic (30 Minutes to 2 Hours)

Peak Period – Shoulder Blocked	Diversion not implemented: <ul style="list-style-type: none"> • On-scene traffic control • Deploy informational DMS messaging for approaching traffic
Off Period – Shoulder and One Lane Blocked	
Peak Period – Shoulder and One Lane Blocked	Partial Diversion: <ul style="list-style-type: none"> • On-scene traffic control • Deploy informational DMS messaging for approaching traffic • Deploy DMS messaging directing through traffic to use global diversion • Monitor local diversion routes at critical locations as needed
All Lanes Blocked	Full Diversion: <ul style="list-style-type: none"> • On-scene traffic control • Deploy DMS messaging directing all traffic to use diversion routes • Deploy law enforcement to direct traffic at critical locations

Major Impact to Traffic (Greater Than 2 Hours)

Peak Period – Shoulder Blocked	Diversion not implemented: <ul style="list-style-type: none"> • On-scene traffic control • Deploy informational DMS messaging for approaching traffic
Off Period – Shoulder and One Lane Blocked	
Peak Period – Shoulder and One Lane Blocked	Partial/Discretionary Diversion: <ul style="list-style-type: none"> • Deploy cones, barricades, and other appropriate traffic control devices • Deploy informational DMS messaging for approaching traffic • Deploy DMS messaging directing through traffic to use global diversion • Divert traffic to local diversion routes at discretion of incident commander
All Lanes Blocked	Full Diversion: <ul style="list-style-type: none"> • Deploy cones, barricades, and other appropriate traffic control devices • Deploy DMS messaging directing all traffic to use diversion routes • Deploy law enforcement to direct traffic at critical locations

LOCAL DETOUR 1/7	GLOBAL DETOUR 2/7	CRITICAL LOCATIONS 3/7	RESPONSE PLAN 4/7	AGENCY CONTACTS 5/7	DMS MESSAGES 6/7	TRAFFIC CONTROL 7/7
---------------------------------	----------------------------------	---------------------------------------	----------------------------------	------------------------------------	---------------------------------	------------------------------------

FREEWAY DIVERSION	WOODBURY COUNTY IOWA	I-29/I-129/US 75 INTERCHANGE	FROM: Exit 144 I-29 South TO: I-129 West/ US 75/ US 20 East/West Split	PLAN 2311 5A/7
------------------------------	---------------------------------	---	--	---------------------------

CRITICAL CONTACTS

DOT Traffic Operations Center Motor Carrier Services District 3 Office (515) 233-7900	Nebraska Department of Roads District 3 (402) 370-3470	South Dakota Department of Transportation Yankton Area (605) 668-2929	Iowa State Patrol (Storm Lake) (712) 732-1341	Nebraska State Patrol (402) 471-4545
--	---	---	---	--

South Dakota State Patrol (605) 356-3581	Woodbury County, IA Sheriff (712) 279-6010	Dakota County, NE Communications Center (Sheriff) (402) 494-7555	Union County, SD Sheriff (605) 356-2679
--	--	---	---

RESPONSIBILITIES

DOT Traffic Operations Center Motor Carrier Services District 3 Office	(515) 233-7900

Nebraska Department of Roads District 3	(402) 370-3470

South Dakota Department of Transportation Yankton Area	(605) 668-2929

Iowa State Patrol (Storm Lake)	(712) 732-1341

Nebraska State Patrol	(402) 471-4545

South Dakota State Patrol	(605) 356-3581

Woodbury County, IA Sheriff	(712) 279-6010

Dakota County, NE Communications Center (Sheriff)	(402) 494-7555

LOCAL DETOUR 1/7	GLOBAL DETOUR 2/7	CRITICAL LOCATIONS 3/7	RESPONSE PLAN 4/7	AGENCY CONTACTS 5/7	DMS MESSAGES 6/7	TRAFFIC CONTROL 7/7
------------------------	-------------------------	------------------------------	-------------------------	---------------------------	------------------------	---------------------------

FREEWAY DIVERSION	WOODBURY COUNTY IOWA	I-29/I-129/US 75 INTERCHANGE	FROM: Exit 144 I-29 South TO: I-129 West/ US 75/ US 20 East/West Split	PLAN 2311 5A/7
CRITICAL CONTACTS				

Union County, SD Sheriff	(605) 356-2679

LOCAL DETOUR 1/7	GLOBAL DETOUR 2/7	CRITICAL LOCATIONS 3/7	RESPONSE PLAN 4/7	AGENCY CONTACTS 5/7	DMS MESSAGES 6/7	TRAFFIC CONTROL 7/7
---------------------------------	----------------------------------	---------------------------------------	----------------------------------	------------------------------------	---------------------------------	------------------------------------

FREEWAY DIVERSION	WOODBURY COUNTY IOWA	I-29/I-129/US 75 INTERCHANGE	FROM: Exit 144 I-29 South TO: I-129 West/ US 75/ US 20 East/West Split	PLAN 2311 5B/7
------------------------------	---------------------------------	---	--	---------------------------

ADDITIONAL CONTACT INFORMATION

Iowa DOT Traffic Operations Center Motor Carrier Services District 3 Office	
District 3 Office	(515) 233-7900

Nebraska Department of Roads District 3	
Nebraska Department of Roads District 3	(402) 370-3470

South Dakota Department of Transportation Yankton Area	
South Dakota Department of Transportation Yankton Area	(605) 668-2929

Iowa State Patrol (Storm Lake)	
Iowa State Patrol (Storm Lake)	(712) 732-1341

Nebraska State Patrol	
Nebraska State Patrol	(402) 471-4545

South Dakota State Patrol	
South Dakota State Patrol	(605) 356-3581

Woodbury County, IA Sheriff	
Woodbury County, IA Sheriff	(712) 279-6010

Dakota County, NE Communications Center (Sheriff)	
Dakota County, NE Communications Center (Sheriff)	(402) 494-7555

Union County, SD Sheriff	
Union County, SD Sheriff	(605) 356-2679

LOCAL DETOUR 1/7	GLOBAL DETOUR 2/7	CRITICAL LOCATIONS 3/7	RESPONSE PLAN 4/7	AGENCY CONTACTS 5/7	DMS MESSAGES 6/7	TRAFFIC CONTROL 7/7
---------------------------------	----------------------------------	---------------------------------------	----------------------------------	------------------------------------	---------------------------------	------------------------------------

FREEWAY DIVERSION	WOODBURY COUNTY IOWA	I-29/I-129/US 75 INTERCHANGE	FROM: Exit 144 I-29 South TO: Exit I-129 West/ US 75/ US 20 East/West Split	PLAN 2311 6/7
DMS MESSAGES				

LOCAL PRIMARY	Sign Location	Page 1	Page 2
	NO DMS AVAILABLE		

LOCAL SECONDARY	Sign Location	Page 1	Page 2
	NO DMS AVAILABLE		

GLOBAL	Sign Location	Page 1	Page 2
	SC-I-29 SB @ Ravine Park (Overhead)	US 20 RAMPS CLOSED	USE I-29 N TO EXIT 143
	SC-I-29 SB @ Hamilton Blvd (Overhead)	US 20 RAMPS CLOSED	USE I-29 N TO EXIT 143

LOCAL DETOUR 1/7	GLOBAL DETOUR 2/7	CRITICAL LOCATIONS 3/7	RESPONSE PLAN 4/7	AGENCY CONTACTS 5/7	DMS MESSAGES 6/7	TRAFFIC CONTROL 7/7
---------------------------------	----------------------------------	---------------------------------------	----------------------------------	------------------------------------	---------------------------------	------------------------------------

FREEWAY DIVERSION	WOODBURY COUNTY IOWA	I-29/I-129/US 75 INTERCHANGE	FROM: Exit 144 I-29 South TO: Exit I-129 West/ US 75/ US 20 East/West Split	PLAN 2311 7/7
--------------------------	-----------------------------	-------------------------------------	--	----------------------

TRAFFIC CONTROL

LOCATION	INITIAL ACTION/RESOURCE	EXTENDED ACTION/RESOURCE
----------	-------------------------	--------------------------

Local Diversion - Primary

SB I-29 Off Ramp Exit 143	Law enforcement traffic control as needed	Install Temporary Diversion Trailblazing Signage as Needed
NB I-29 On Ramp & Singing Hills Blvd.	Law enforcement traffic control as needed	Install Temporary Diversion Trailblazing Signage as Needed

Local Diversion - Secondary

Singing Hills Blvd. & S. Lakeport St.	Traffic backing up at ramp	Use secondary route Deploy law enforcement to control traffic flow as needed
---------------------------------------	----------------------------	---

Global Diversion

NO TRAFFIC CONTROL

LOCAL DETOUR 1/7	GLOBAL DETOUR 2/7	CRITICAL LOCATIONS 3/7	RESPONSE PLAN 4/7	AGENCY CONTACTS 5/7	DMS MESSAGES 6/7	TRAFFIC CONTROL 7/7
-------------------------	--------------------------	-------------------------------	--------------------------	----------------------------	-------------------------	----------------------------