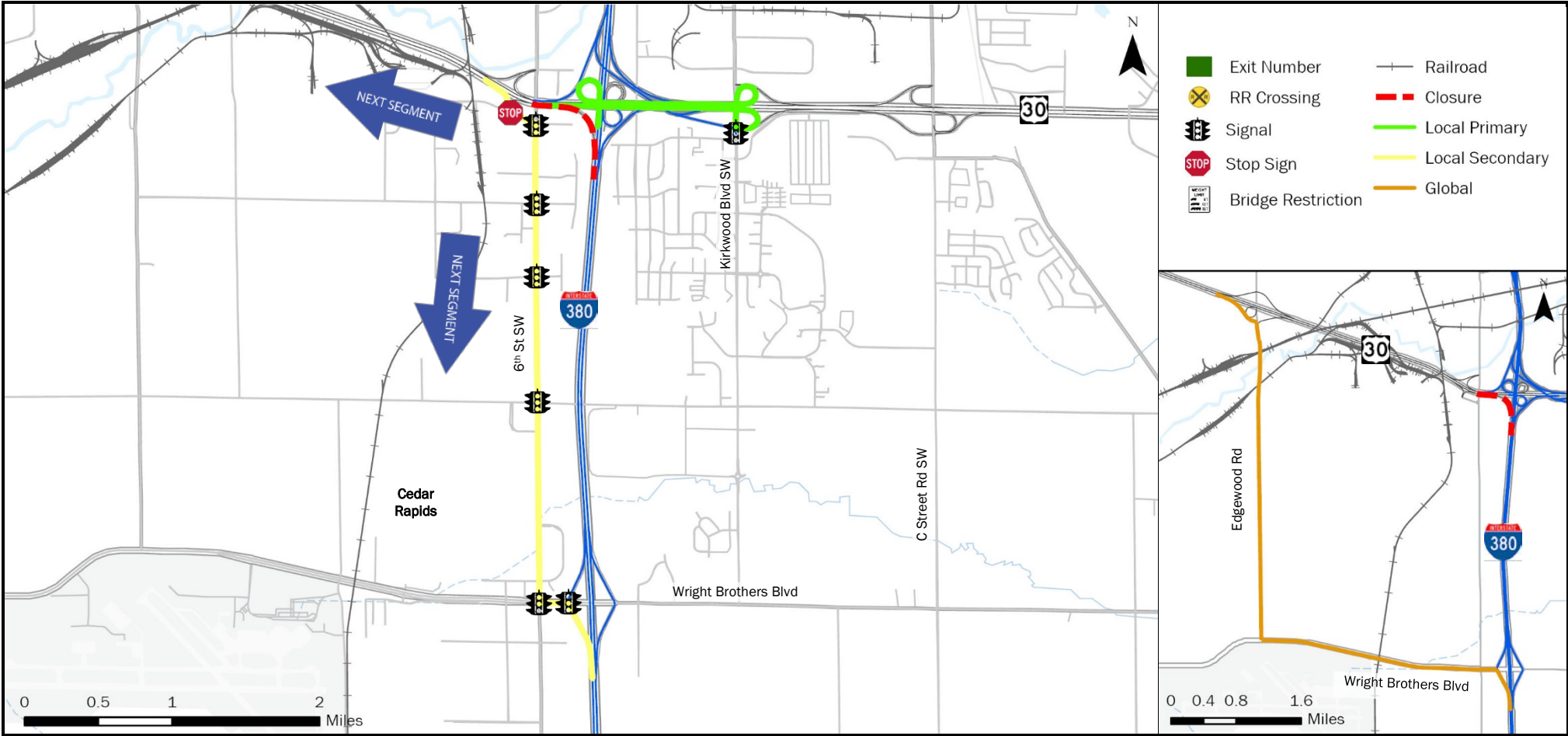
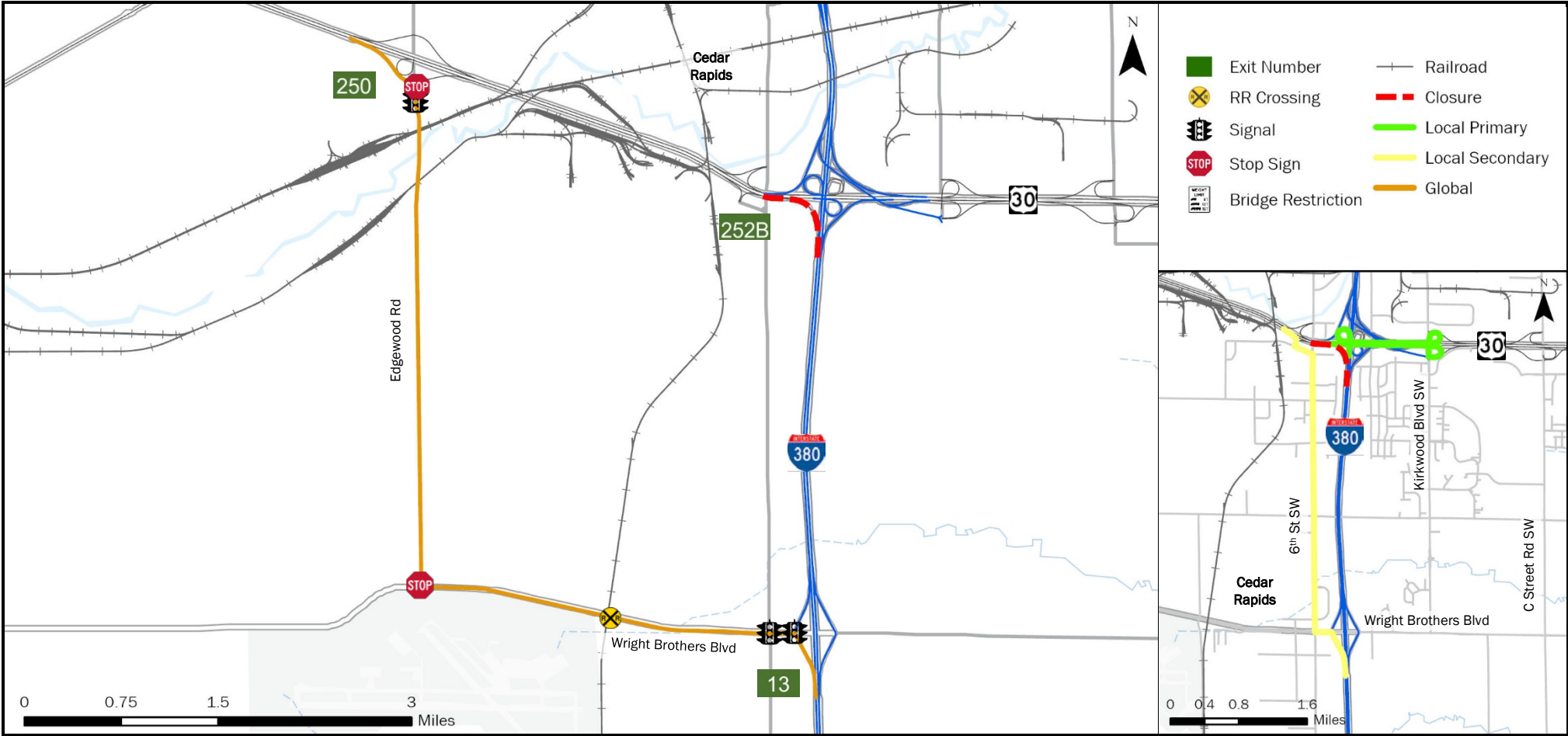


FREEWAY DIVERSION	LINN COUNTY IOWA	I-380/US 30 (EB US 30 to SB I-380)	FROM: US 30 EB	TO: I-380 SB	PLAN 3209 1/7
------------------------------	-----------------------------	---	---------------------------	-------------------------	--------------------------



CRITICAL LOCATIONS TO MONITOR FOR LOCAL PRIMARY	AGENCIES TO NOTIFY	Iowa DOT TMC: 515-237-3300
US 30 EB Off Ramp to Kirkwood Blvd SW NB Kirkwood Blvd SW NB to US 30 WB On Ramp US 30 WB to I-380 SB Off Ramp	Linn County Emergency Communications Center 319-892-6500 Iowa Department of Public Safety Communications Center 319-396-4414 Iowa DOT Traffic Management Center 515-237-3300	

LOCAL DETOUR 1/7	GLOBAL DETOUR 2/7	CRITICAL LOCATIONS 3/7	RESPONSE PLAN 4/7	AGENCY CONTACTS 5/7	DMS MESSAGES 6/7	TRAFFIC CONTROL 7/7
---------------------------------	----------------------------------	---------------------------------------	----------------------------------	------------------------------------	---------------------------------	------------------------------------



CRITICAL LOCATIONS TO MONITOR FOR GLOBAL	AGENCIES TO NOTIFY	Iowa DOT TMC: 515-237-3300
Edgewood Rd SW SB at Beverly Rd SW/Prairie Valley Ct SW Edgewood Rd SW SB to Wright Brothers Blvd SW EB Wright Brothers Blvd SW EB at CIC RR Crossing (Cedar Rapids) Wright Brothers Blvd SW EB to I-380 SB On Ramp US 30 EB Off Ramp to Edgewood Rd SW SB	Linn County Emergency Communications Center Iowa Department of Public Safety Communications Center Iowa DOT Traffic Management Center	319-892-6500 319-396-4414 515-237-3300

FREEWAY DIVERSION	LINN COUNTY IOWA	I-380/US 30 (EB US 30 to SB I-380)	FROM: US 30 EB TO: I-380 SB	PLAN 3209 3/7
CRITICAL AREAS TO MONITOR				

LOCATION	EXIT	SITUATION	RESPONSE
-----------------	-------------	------------------	-----------------

Local Diversion - Primary

US 30 EB Off Ramp to Kirkwood Blvd SW NB	252A	Traffic backing up and significant delays due to a traffic signal	Notify local law enforcement
Kirkwood Blvd SW NB to US 30 WB On Ramp	252A	Traffic returning to interstate	Monitor location
US 30 WB to I-380 SB Off Ramp	16	Traffic merging onto interstate	Monitor location

Local Diversion - Secondary

US 30 EB Off Ramp to Waconia Ave SW EB	252A	Traffic backing up and significant delays due to a stop sign	Notify local law enforcement
Waconia Ave SW EB to 6th St SW SB		Traffic backing up and significant delays due to a traffic signal	Notify local law enforcement
6th St SW SB to Wright Brothers Blvd SW EB		Traffic backing up and significant delays due to 4 traffic signals	Notify local law enforcement
Wright Brothers Blvd SW EB to I-380 SB On Ramp	13	Traffic backing up and significant delays due to a traffic signal	Notify local law enforcement

Global Diversion

US 30 EB Off Ramp to Edgewood Rd SW SB		Traffic backing up and significant delays due to a stop sign	Notify local law enforcement
Edgewood Rd SW SB at Beverly Rd SW/Prairie Valley Ct SW		Traffic backing up and significant delays due to a traffic signal	Notify local law enforcement
Edgewood Rd SW SB to Wright Brothers Blvd SW EB		Traffic backing up and significant delays due to a stop sign	Notify local law enforcement
Wright Brothers Blvd SW EB at CIC RR Crossing (Cedar Rapids)		Train blocking the crossing (Gates/Flashers)	Contact CIC Railroad and notify local law enforcement
Wright Brothers Blvd SW EB to I-380 SB On Ramp	13	Traffic backing up and significant delays due to 3 traffic signals	Notify local law enforcement

LOCAL DETOUR 1/7	GLOBAL DETOUR 2/7	CRITICAL LOCATIONS 3/7	RESPONSE PLAN 4/7	AGENCY CONTACTS 5/7	DMS MESSAGES 6/7	TRAFFIC CONTROL 7/7
---------------------------------	----------------------------------	---------------------------------------	----------------------------------	------------------------------------	---------------------------------	------------------------------------

FREEWAY DIVERSION	LINN COUNTY IOWA	I-380/US 30 (EB US 30 to SB I-380)	FROM: US 30 EB TO: I-380 SB	PLAN 3209 4/7
ALTERNATE ROUTE RESPONSE PLAN				

Minor Impact to Traffic (Less Than 30 Minutes)

Off Peak – Shoulder Blocked	Diversion not implemented: <ul style="list-style-type: none"> • On-scene traffic control • Deploy informational DMS messaging for approaching traffic
Off Peak – Shoulder and One Lane Blocked	

Intermediate Impact to Traffic (30 Minutes to 2 Hours)

Peak Period – Shoulder Blocked	Diversion not implemented: <ul style="list-style-type: none"> • On-scene traffic control • Deploy informational DMS messaging for approaching traffic
Off Period – Shoulder and One Lane Blocked	
Peak Period – Shoulder and One Lane Blocked	Partial Diversion: <ul style="list-style-type: none"> • On-scene traffic control • Deploy informational DMS messaging for approaching traffic • Deploy DMS messaging directing through traffic to use diversion route • Monitor local diversion routes at critical locations as needed
All Lanes Blocked	Full Diversion: <ul style="list-style-type: none"> • On-scene traffic control • Deploy DMS messaging directing all traffic to use diversion routes • Deploy law enforcement to direct traffic at critical locations

Major Impact to Traffic (Greater Than 2 Hours)

Peak Period – Shoulder Blocked	Diversion not implemented: <ul style="list-style-type: none"> • On-scene traffic control • Deploy informational DMS messaging for approaching traffic
Off Period – Shoulder and One Lane Blocked	
Peak Period – Shoulder and One Lane Blocked	Partial/Discretionary Diversion: <ul style="list-style-type: none"> • Deploy cones, barricades, and other appropriate traffic control devices • Deploy informational DMS messaging for approaching traffic • Deploy DMS messaging directing through traffic to use diversion route • Divert traffic to local diversion routes at discretion of incident commander
All Lanes Blocked	Full Diversion: <ul style="list-style-type: none"> • Deploy cones, barricades, and other appropriate traffic control devices • Deploy DMS messaging directing all traffic to use diversion routes • Deploy law enforcement to direct traffic at critical locations

LOCAL DETOUR 1/7	GLOBAL DETOUR 2/7	CRITICAL LOCATIONS 3/7	RESPONSE PLAN 4/7	AGENCY CONTACTS 5/7	DMS MESSAGES 6/7	TRAFFIC CONTROL 7/7
---------------------------------	----------------------------------	---------------------------------------	----------------------------------	------------------------------------	---------------------------------	------------------------------------

FREEWAY DIVERSION	LINN COUNTY IOWA	I-380/US 30 (EB US 30 to SB I-380)	FROM: US 30 EB TO: I-380 SB	PLAN 3209 5A/7
------------------------------	-----------------------------	---	--	---------------------------

CRITICAL CONTACTS

Linn County Emergency Communications Center 319-892-6500	Iowa DOT Traffic Management Center 515-237-3300	Iowa Department of Public Safety Communications Center 319-396-4414
--	---	---

RESPONSIBILITIES

Linn County Emergency Communications Center	319-892-6500
Coordinate with the incident commander as to whether a diversion route is needed and which one should be implemented. <ul style="list-style-type: none"> • Notify Iowa DOT statewide TMC of route implemented, incident specific or maintenance needs, and who the incident commander is. • Dispatch County Sheriff, local law enforcement, and fire departments as needed. • Inform local municipalities and other jurisdictions that a diversion route is being implemented. • Deploy law enforcement to direct traffic at critical locations as needed. 	
<u>Emergency Responders:</u> <ul style="list-style-type: none"> • Secure scene. • Provide incident information, diversion route recommendations, and towing needs to E911. • Minimize impact to traffic. • Ensure overweight and oversize vehicles are parked. • Provide manual traffic control as needed, or as directed by E911 at critical locations. 	

Iowa DOT Traffic Management Center	515-237-3300
Deploy informational DMS and 511 messages to alert motorists of construction, delays, incidents, closures, etc. and/or directional DMS messaging to direct traffic to the implemented diversion route. <ul style="list-style-type: none"> • Monitor incidents and critical locations along the implemented diversion route. • Coordinate with Iowa DOT maintenance facilities regarding traffic control needs. • Deploy PDMS and Portable CCTV devices as needed for longer duration incidents. • Coordinate with local municipalities regarding the modification of signals, signal timing, or stop signs. • Coordinate with railroad authority regarding key crossings along the implemented diversion route. 	

Iowa Department of Public Safety Communications Center	319-396-4414
<u>Dispatch State Patrol. On-Scene Incident Commander:</u> <ul style="list-style-type: none"> • Secure scene. • Notify appropriate communications center of incident location, anticipated duration, affected lanes, and identify the incident commander. • Coordinate with the communications center regarding diversion route needs. • Minimize impact to traffic through coordination of on-scene traffic control. • Ensure overweight vehicles are parked. • When the incident is safely cleared, notify the appropriate communications center that the diversion route is no longer needed. 	

LOCAL DETOUR 1/7	GLOBAL DETOUR 2/7	CRITICAL LOCATIONS 3/7	RESPONSE PLAN 4/7	AGENCY CONTACTS 5/7	DMS MESSAGES 6/7	TRAFFIC CONTROL 7/7
---------------------------------	----------------------------------	---------------------------------------	----------------------------------	------------------------------------	---------------------------------	------------------------------------

Iowa DOT TMC: 515-237-3300

ENSURE ALL OVERWEIGHT AND OVERSIZE VEHICLES ARE PARKED SAFELY

FREEWAY DIVERSION	LINN COUNTY IOWA	I-380/US 30 (EB US 30 to SB I-380)	FROM: US 30 EB TO: I-380 SB	PLAN 3209 5B/7
ADDITIONAL CONTACT INFORMATION				

Linn County Emergency Communications Center	
Linn County Sheriff	319-892-6100
Linn County Emergency Management	319-892-6500
Linn County Engineering Department	319-892-6404
Cedar Rapids Police Department	319-286-5529
Cedar Rapids Fire Department	319-286-5200

Iowa Department of Public Safety Communications Center	
Iowa State Patrol – District 9	319-266-2677

Iowa DOT Statewide TMC/MVE	
Iowa DOT Statewide TMC (Toll Free)	888-449-9672
Iowa DOT Maint. Supervisor – Cedar Rapids	319-350-1764
Iowa DOT Main Garage - Cedar Rapids	319-364-8189
Iowa DOT Maint. Supervisor – Marion	319-480-0588
Iowa DOT Main Garage – Marion	319-373-1277
Union Pacific Railway Co.	402-544-5000
Chicago, Central and Pacific Railroad Co.	514-399-8740
Cedar Rapids and Iowa City Railway Co. (CIC)	800-283-1540
Iowa DOT Motor Vehicle Division	515-237-3268
Area 4 Motor Vehicle Enforcement	319-560-8502

LOCAL DETOUR 1/7	GLOBAL DETOUR 2/7	CRITICAL LOCATIONS 3/7	RESPONSE PLAN 4/7	AGENCY CONTACTS 5/7	DMS MESSAGES 6/7	TRAFFIC CONTROL 7/7
---------------------------------	----------------------------------	---------------------------------------	----------------------------------	------------------------------------	---------------------------------	------------------------------------

Iowa DOT TMC: 515-237-3300

ENSURE ALL OVERWEIGHT AND OVERSIZE VEHICLES ARE PARKED SAFELY

FREEWAY DIVERSION	LINN COUNTY IOWA	I-380/US 30 (EB US 30 to SB I-380)	FROM: US 30 EB TO: I-380 SB	PLAN 3209 6/7
DMS MESSAGES				

LOCAL PRIMARY	Sign Location	Page 1	Page 2
	US 30: US 30 EB @ Edgewood - OH	RAMP TO I-380 S CLOSED DETOUR TO EX 253	

LOCAL SECONDARY	Sign Location	Page 1	Page 2
	NO DMS AVAILABLE		

GLOBAL	Sign Location	Page 1	Page 2
	NO DMS AVAILABLE		

LOCAL DETOUR 1/7	GLOBAL DETOUR 2/7	CRITICAL LOCATIONS 3/7	RESPONSE PLAN 4/7	AGENCY CONTACTS 5/7	DMS MESSAGES 6/7	TRAFFIC CONTROL 7/7
---------------------------------	----------------------------------	---------------------------------------	----------------------------------	------------------------------------	---------------------------------	------------------------------------

FREEWAY DIVERSION	LINN COUNTY IOWA	I-380/US 30 (EB US 30 to SB I-380)	FROM: US 30 EB TO: I-380 SB	PLAN 3209 7/7
TRAFFIC CONTROL				

LOCATION	INITIAL ACTION/RESOURCE	EXTENDED ACTION/RESOURCE
----------	-------------------------	--------------------------

Local Diversion - Primary

US 30 EB Off Ramp to Kirkwood Blvd SW NB	Detour signing	Manual traffic control (as needed/peak periods)
Kirkwood Blvd SW NB to US 30 WB On Ramp	Monitor location	Monitor location
US 30 WB to I-380 SB Off Ramp	Monitor location	Monitor location

Local Diversion - Secondary

US 30 EB Off Ramp to Waconia Ave SW EB	Detour signing	Manual traffic control (as needed/peak periods)
Waconia Ave SW EB to 6th St SW SB	Detour signing	Manual traffic control (as needed/peak periods)
6th St SW SB to Wright Brothers Blvd SW EB	Detour signing	Manual traffic control (as needed/peak periods)
Wright Brothers Blvd SW EB to I-380 SB On Ramp	Detour signing	Manual traffic control (as needed/peak periods)

Global Diversion

US 30 EB Off Ramp to Edgewood Rd SW SB	Detour signing	Manual traffic control (as needed/peak periods)
Edgewood Rd SW SB at Beverly Rd SW/Prairie Valley Ct SW	Detour signing	Manual traffic control (as needed/peak periods)
Edgewood Rd SW SB to Wright Brothers Blvd SW EB	Detour signing	Manual traffic control (as needed/peak periods)
Wright Brothers Blvd SW EB at CIC RR Crossing (Cedar Rapids)	Monitor location Coordinate with local law enforcement as necessary	Coordinate with CIC Railway and local law enforcement as necessary
Wright Brothers Blvd SW EB to I-380 SB On Ramp	Detour signing	Manual traffic control (as needed/peak periods)

LOCAL DETOUR 1/7	GLOBAL DETOUR 2/7	CRITICAL LOCATIONS 3/7	RESPONSE PLAN 4/7	AGENCY CONTACTS 5/7	DMS MESSAGES 6/7	TRAFFIC CONTROL 7/7
---------------------------------	----------------------------------	---------------------------------------	----------------------------------	------------------------------------	---------------------------------	------------------------------------