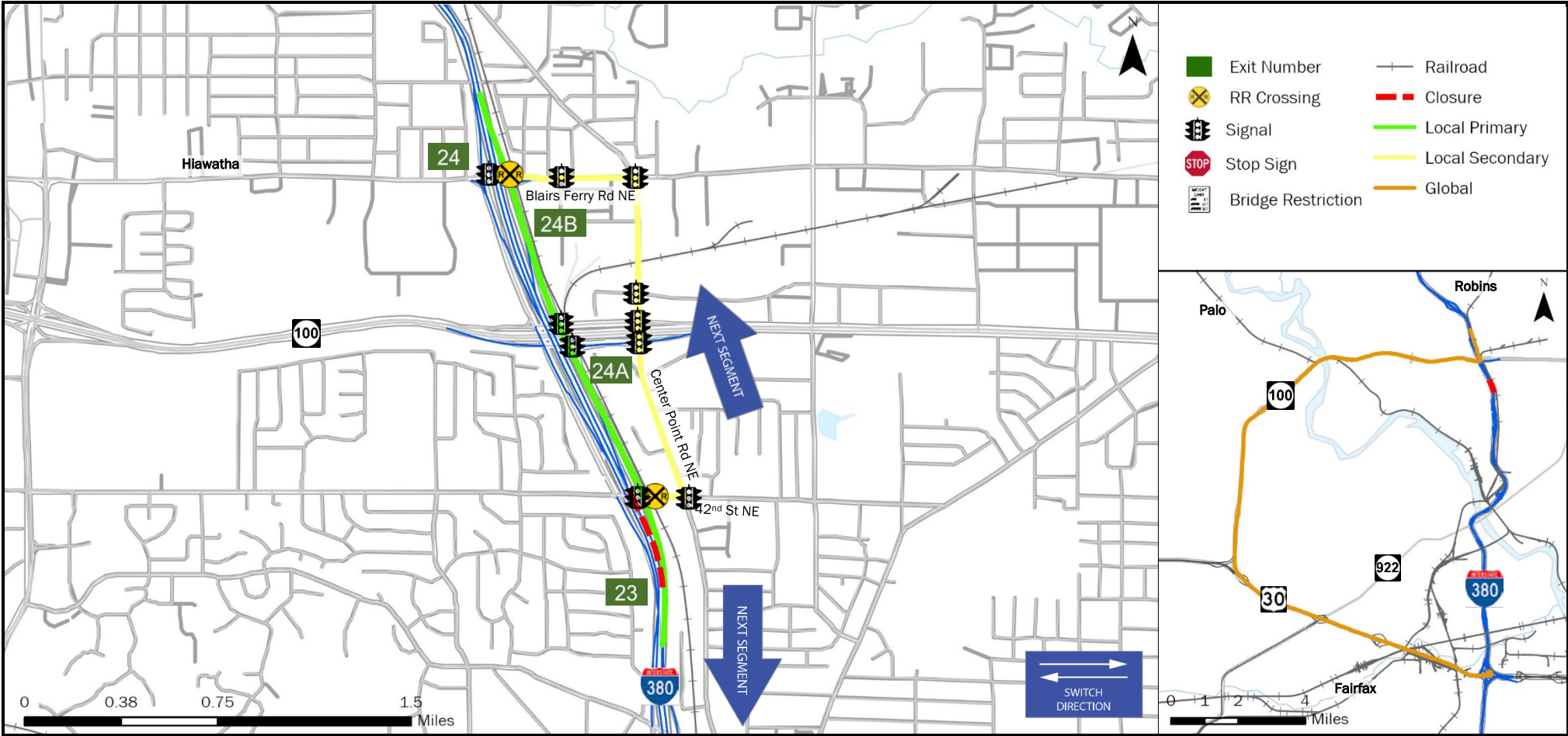


<b>FREEWAY DIVERSION</b>	<b>LINN COUNTY IOWA</b>	<b>I-380 NORTHBOUND</b>	<b>FROM:</b> Exit 23 (42nd St)	<b>TO:</b> Exit 24 (IA 100/Collins Rd)	<b>PLAN 3325 1/7</b>
------------------------------	-----------------------------	-----------------------------	-----------------------------------	---	--------------------------



<b>CRITICAL LOCATIONS TO MONITOR FOR LOCAL PRIMARY</b>	<b>AGENCIES TO NOTIFY</b>	Iowa DOT TMC: 515-237-3300
I-380 NB Off Ramp to I-380 Frontage Rd NB I-380 Frontage Rd NB at IA 100/Collins Rd I-380 Frontage Rd NB to I-380 NB On Ramp	Linn County Emergency Communications Center Iowa Department of Public Safety Communications Center Iowa DOT Traffic Management Center	319-892-6500 319-396-4414 515-237-3300

<b>LOCAL DETOUR 1/7</b>	<b>GLOBAL DETOUR 2/7</b>	<b>CRITICAL LOCATIONS 3/7</b>	<b>RESPONSE PLAN 4/7</b>	<b>AGENCY CONTACTS 5/7</b>	<b>DMS MESSAGES 6/7</b>	<b>TRAFFIC CONTROL 7/7</b>
---------------------------------	----------------------------------	---------------------------------------	----------------------------------	------------------------------------	---------------------------------	------------------------------------



<b>FREEWAY DIVERSION</b>	<b>LINN COUNTY IOWA</b>	<b>I-380 NORTHBOUND</b>	<b>FROM:</b> Exit 23 (42nd St) <b>TO:</b> Exit 24 (IA 100/Collins Rd)	<b>PLAN 3325 3/7</b>
<b>CRITICAL AREAS TO MONITOR</b>				

<b>LOCATION</b>	<b>EXIT</b>	<b>SITUATION</b>	<b>RESPONSE</b>
-----------------	-------------	------------------	-----------------

### Local Diversion - Primary

I-380 NB Off Ramp to I-380 Frontage Rd NB	23	Traffic backing up onto interstate	Provide appropriate message on upstream DMS
I-380 Frontage Rd NB at IA 100/Collins Rd		Traffic backing up and significant delays due to 2 traffic signals	Notify local law enforcement
I-380 Frontage Rd NB to I-380 NB On Ramp	24B	Traffic backing up and significant delays due to a traffic signal	Notify local law enforcement

### Local Diversion - Secondary

I-380 NB Off Ramp to 42 <sup>nd</sup> St NE EB	23	Traffic backing up onto interstate	Provide appropriate message on upstream DMS
42 <sup>nd</sup> St NE EB to Center Point Rd NB		Traffic backing up and significant delays due to a traffic signal and/or train blocking the crossing	Contact UP Railroad and notify local law enforcement
Center Point Rd NB to Blairs Ferry Rd NE WB		Traffic backing up and significant delays due to 4 traffic signals	Notify local law enforcement
Blairs Ferry Rd NE WB to I-380 NB On Ramp	24B	Traffic backing up and significant delays due to 2 traffic signals and/or train blocking the crossing	Contact UP Railroad and notify local law enforcement

### Global Diversion

I-380 NB Off Ramp to US 30 WB	16B	Traffic merging onto highway	Monitor location
US 30 WB to IA 100 NB		Traffic merging onto highway	Monitor location
IA 100 EB to I-380 NB On Ramp	24A	Traffic merging onto interstate	Monitor location

<b>LOCAL DETOUR 1/7</b>	<b>GLOBAL DETOUR 2/7</b>	<b>CRITICAL LOCATIONS 3/7</b>	<b>RESPONSE PLAN 4/7</b>	<b>AGENCY CONTACTS 5/7</b>	<b>DMS MESSAGES 6/7</b>	<b>TRAFFIC CONTROL 7/7</b>
---------------------------------	----------------------------------	---------------------------------------	----------------------------------	------------------------------------	---------------------------------	------------------------------------

<b>FREEWAY DIVERSION</b>	<b>LINN COUNTY IOWA</b>	<b>I-380 NORTHBOUND</b>	<b>FROM:</b> Exit 23 (42nd St) <b>TO:</b> Exit 24 (IA 100/Collins Rd)	<b>PLAN 3325 4/7</b>
<b>ALTERNATE ROUTE RESPONSE PLAN</b>				

### Minor Impact to Traffic (Less Than 30 Minutes)

Off Peak – Shoulder Blocked	Diversion not implemented: <ul style="list-style-type: none"> <li>• On-scene traffic control</li> <li>• Deploy informational DMS messaging for approaching traffic</li> </ul>
Off Peak – Shoulder and One Lane Blocked	

### Intermediate Impact to Traffic (30 Minutes to 2 Hours)

Peak Period – Shoulder Blocked	Diversion not implemented: <ul style="list-style-type: none"> <li>• On-scene traffic control</li> <li>• Deploy informational DMS messaging for approaching traffic</li> </ul>
Off Period – Shoulder and One Lane Blocked	
Peak Period – Shoulder and One Lane Blocked	<b>Partial Diversion:</b> <ul style="list-style-type: none"> <li>• On-scene traffic control</li> <li>• Deploy informational DMS messaging for approaching traffic</li> <li>• Deploy DMS messaging directing through traffic to use diversion route</li> <li>• Monitor local diversion routes at critical locations as needed</li> </ul>
All Lanes Blocked	<b>Full Diversion:</b> <ul style="list-style-type: none"> <li>• On-scene traffic control</li> <li>• Deploy DMS messaging directing all traffic to use diversion routes</li> <li>• Deploy law enforcement to direct traffic at critical locations</li> </ul>

### Major Impact to Traffic (Greater Than 2 Hours)

Peak Period – Shoulder Blocked	Diversion not implemented: <ul style="list-style-type: none"> <li>• On-scene traffic control</li> <li>• Deploy informational DMS messaging for approaching traffic</li> </ul>
Off Period – Shoulder and One Lane Blocked	
Peak Period – Shoulder and One Lane Blocked	<b>Partial/Discretionary Diversion:</b> <ul style="list-style-type: none"> <li>• Deploy cones, barricades, and other appropriate traffic control devices</li> <li>• Deploy informational DMS messaging for approaching traffic</li> <li>• Deploy DMS messaging directing through traffic to use diversion route</li> <li>• Divert traffic to local diversion routes at discretion of incident commander</li> </ul>
All Lanes Blocked	<b>Full Diversion:</b> <ul style="list-style-type: none"> <li>• Deploy cones, barricades, and other appropriate traffic control devices</li> <li>• Deploy DMS messaging directing all traffic to use diversion routes</li> <li>• Deploy law enforcement to direct traffic at critical locations</li> </ul>

<b>LOCAL DETOUR 1/7</b>	<b>GLOBAL DETOUR 2/7</b>	<b>CRITICAL LOCATIONS 3/7</b>	<b>RESPONSE PLAN 4/7</b>	<b>AGENCY CONTACTS 5/7</b>	<b>DMS MESSAGES 6/7</b>	<b>TRAFFIC CONTROL 7/7</b>
---------------------------------	----------------------------------	---------------------------------------	----------------------------------	------------------------------------	---------------------------------	------------------------------------

<b>FREEWAY DIVERSION</b>	<b>LINN COUNTY IOWA</b>	<b>I-380 NORTHBOUND</b>	<b>FROM:</b> Exit 23 (42nd St) <b>TO:</b> Exit 24 (IA 100/Collins Rd)	<b>PLAN 3325 5A/7</b>
------------------------------	-----------------------------	-----------------------------	--	---------------------------

<b>CRITICAL CONTACTS</b>
--------------------------

Linn County Emergency Communications Center 319-892-6500	Iowa DOT Traffic Management Center 515-237-3300	Iowa Department of Public Safety Communications Center 319-396-4414
--	---	---

## RESPONSIBILITIES

<b>Linn County Emergency Communications Center</b>	<b>319-892-6500</b>
Coordinate with the incident commander as to whether a diversion route is needed and which one should be implemented. <ul style="list-style-type: none"> <li>• Notify Iowa DOT statewide TMC of route implemented, incident specific or maintenance needs, and who the incident commander is.</li> <li>• Dispatch County Sheriff, local law enforcement, and fire departments as needed.</li> <li>• Inform local municipalities and other jurisdictions that a diversion route is being implemented.</li> <li>• Deploy law enforcement to direct traffic at critical locations as needed.</li> </ul>	
<u>Emergency Responders:</u> <ul style="list-style-type: none"> <li>• Secure scene.</li> <li>• Provide incident information, diversion route recommendations, and towing needs to E911.</li> <li>• Minimize impact to traffic.</li> <li>• Ensure overweight and oversize vehicles are parked.</li> <li>• Provide manual traffic control as needed, or as directed by E911 at critical locations.</li> </ul>	

<b>Iowa DOT Traffic Management Center</b>	<b>515-237-3300</b>
Deploy informational DMS and 511 messages to alert motorists of construction, delays, incidents, closures, etc. and/or directional DMS messaging to direct traffic to the implemented diversion route. <ul style="list-style-type: none"> <li>• Monitor incidents and critical locations along the implemented diversion route.</li> <li>• Coordinate with Iowa DOT maintenance facilities regarding traffic control needs.</li> <li>• Deploy PDMS and Portable CCTV devices as needed for longer duration incidents.</li> <li>• Coordinate with local municipalities regarding the modification of signals, signal timing, or stop signs.</li> <li>• Coordinate with railroad authority regarding key crossings along the implemented diversion route.</li> </ul>	

<b>Iowa Department of Public Safety Communications Center</b>	<b>319-396-4414</b>
Dispatch State Patrol.	
<u>On-Scene Incident Commander:</u> <ul style="list-style-type: none"> <li>• Secure scene.</li> <li>• Notify appropriate communications center of incident location, anticipated duration, affected lanes, and identify the incident commander.</li> <li>• Coordinate with the communications center regarding diversion route needs.</li> <li>• Minimize impact to traffic through coordination of on-scene traffic control.</li> <li>• Ensure overweight and oversize vehicles are parked.</li> <li>• When the incident is safely cleared, notify the appropriate communications center that the diversion route is no longer needed.</li> </ul>	

<b>LOCAL DETOUR 1/7</b>	<b>GLOBAL DETOUR 2/7</b>	<b>CRITICAL LOCATIONS 3/7</b>	<b>RESPONSE PLAN 4/7</b>	<b>AGENCY CONTACTS 5/7</b>	<b>DMS MESSAGES 6/7</b>	<b>TRAFFIC CONTROL 7/7</b>
---------------------------------	----------------------------------	---------------------------------------	----------------------------------	------------------------------------	---------------------------------	------------------------------------

Iowa DOT TMC: 515-237-3300

**ENSURE ALL OVERWEIGHT AND OVERSIZE VEHICLES ARE PARKED SAFELY**



<b>FREEWAY DIVERSION</b>	<b>LINN COUNTY IOWA</b>	<b>I-380 NORTHBOUND</b>	<b>FROM:</b> Exit 23 (42nd St) <b>TO:</b> Exit 24 (IA 100/Collins Rd)	<b>PLAN 3325 5B/7</b>
<b>ADDITIONAL CONTACT INFORMATION</b>				

<b>Linn County Emergency Communications Center</b>	
Linn County Sheriff	319-892-6100
Linn County Emergency Management	319-892-6500
Linn County Engineering Department	319-892-6404
Cedar Rapids Police Department	319-286-5529
Cedar Rapids Fire Department	319-286-5200
Hiawatha Police Department	319-393-1212
Hiawatha Fire Department	319-393-4180

<b>Iowa Department of Public Safety Communications Center</b>	
Iowa State Patrol – District 9	319-266-2677

<b>Iowa DOT Traffic Management Center</b>	
Iowa DOT Statewide TMC (Toll Free)	888-449-9672
Iowa DOT Maint. Supervisor – Cedar Rapids	319-350-1764
Iowa DOT Main Garage - Cedar Rapids	319-364-8189
Iowa DOT Maint. Supervisor –Marion	319-480-0588
Iowa DOT Main Garage – Marion	319-373-1277
Union Pacific Railway Co.	888-877-7267
Chicago, Central and Pacific Railroad Co. (CCP)	800-465-9239
Cedar Rapids and Iowa City Railway Co. (CIC)	800-283-1540
Iowa DOT Motor Vehicle Division	515-237-3268
Area 4 Motor Vehicle Enforcement	319-560-8502

<b>LOCAL DETOUR 1/7</b>	<b>GLOBAL DETOUR 2/7</b>	<b>CRITICAL LOCATIONS 3/7</b>	<b>RESPONSE PLAN 4/7</b>	<b>AGENCY CONTACTS 5/7</b>	<b>DMS MESSAGES 6/7</b>	<b>TRAFFIC CONTROL 7/7</b>
Iowa DOT TMC: 515-237-3300			ENSURE ALL OVERWEIGHT AND OVERSIZE VEHICLES ARE PARKED SAFELY			

<b>FREEWAY DIVERSION</b>	<b>LINN COUNTY IOWA</b>	<b>I-380 NORTHBOUND</b>	<b>FROM:</b> Exit 23 (42nd St) <b>TO:</b> Exit 24 (IA 100/Collins Rd)	<b>PLAN 3325 6/7</b>
<b>DMS MESSAGES</b>				

<b>LOCAL PRIMARY</b>	<b>Sign Location</b>	<b>Page 1</b>	<b>Page 2</b>
	I-380 NB @ 15 <sup>th</sup> St – OH	ROAD CLOSED AT EXIT 23 USE ALT ROUTE	
	I-380 NB @ 29 <sup>th</sup> St – OH	ROAD CLOSED AT EXIT 23 USE ALT ROUTE	
	US 30 WB @ IA 13 – OH	I-380 N CLOSED AT EXIT 23 USE ALT ROUTE	
	US 30 WB @ Kirkwood – OH	I-380 N CLOSED AT EXIT 23 USE ALT ROUTE	
	US 30 EB @ Edgewood – OH	I-380 N CLOSED AT EXIT 23 USE ALT ROUTE	

<b>LOCAL SECONDARY</b>	<b>Sign Location</b>	<b>Page 1</b>	<b>Page 2</b>
	<b>NO DMS AVAILABLE</b>		

<b>GLOBAL</b>	<b>Sign Location</b>	<b>Page 1</b>	<b>Page 2</b>
	<b>NO DMS AVAILABLE</b>		

<b>LOCAL DETOUR 1/7</b>	<b>GLOBAL DETOUR 2/7</b>	<b>CRITICAL LOCATIONS 3/7</b>	<b>RESPONSE PLAN 4/7</b>	<b>AGENCY CONTACTS 5/7</b>	<b>DMS MESSAGES 6/7</b>	<b>TRAFFIC CONTROL 7/7</b>
---------------------------------	----------------------------------	---------------------------------------	----------------------------------	------------------------------------	---------------------------------	------------------------------------

<b>FREEWAY DIVERSION</b>	<b>LINN COUNTY IOWA</b>	<b>I-380 NORTHBOUND</b>	<b>FROM:</b> Exit 23 (42nd St) <b>TO:</b> Exit 24 (IA 100/Collins Rd)	<b>PLAN 3325 7/7</b>
<b>TRAFFIC CONTROL</b>				

<b>LOCATION</b>	<b>INITIAL ACTION/RESOURCE</b>	<b>EXTENDED ACTION/RESOURCE</b>
-----------------	--------------------------------	---------------------------------

**Local Diversion - Primary**

I-380 NB Off Ramp to I-380 Frontage Rd NB	Detour signing	Monitor location
I-380 Frontage Rd NB at IA 100/Collins Rd	Detour signing	Manual traffic control (as needed/peak periods)
I-380 Frontage Rd NB to I-380 NB On Ramp	Detour signing	Manual traffic control (as needed/peak periods)

**Local Diversion - Secondary**

I-380 NB Off Ramp to 42 <sup>nd</sup> St NE EB	Detour signing	Monitor location
42 <sup>nd</sup> St NE EB to Center Point Rd NB	Monitor location Coordinate with local law enforcement as necessary	Coordinate with UP Railway and manual traffic control (as needed/peak periods)
Center Point Rd NB to Blairs Ferry Rd NE WB	Detour signing	Manual traffic control (as needed/peak periods)
Blairs Ferry Rd NE WB to I-380 NB On Ramp	Monitor location Coordinate with local law enforcement as necessary	Coordinate with UP Railway and manual traffic control (as needed/peak periods)

**Global Diversion**

I-380 NB Off Ramp to US 30 WB	Detour signing	Monitor location
US 30 WB to IA 100 NB	Detour signing	Monitor location
IA 100 WB to I-380 NB On Ramp	Detour signing	Monitor location

<b>LOCAL DETOUR 1/7</b>	<b>GLOBAL DETOUR 2/7</b>	<b>CRITICAL LOCATIONS 3/7</b>	<b>RESPONSE PLAN 4/7</b>	<b>AGENCY CONTACTS 5/7</b>	<b>DMS MESSAGES 6/7</b>	<b>TRAFFIC CONTROL 7/7</b>
---------------------------------	----------------------------------	---------------------------------------	----------------------------------	------------------------------------	---------------------------------	------------------------------------