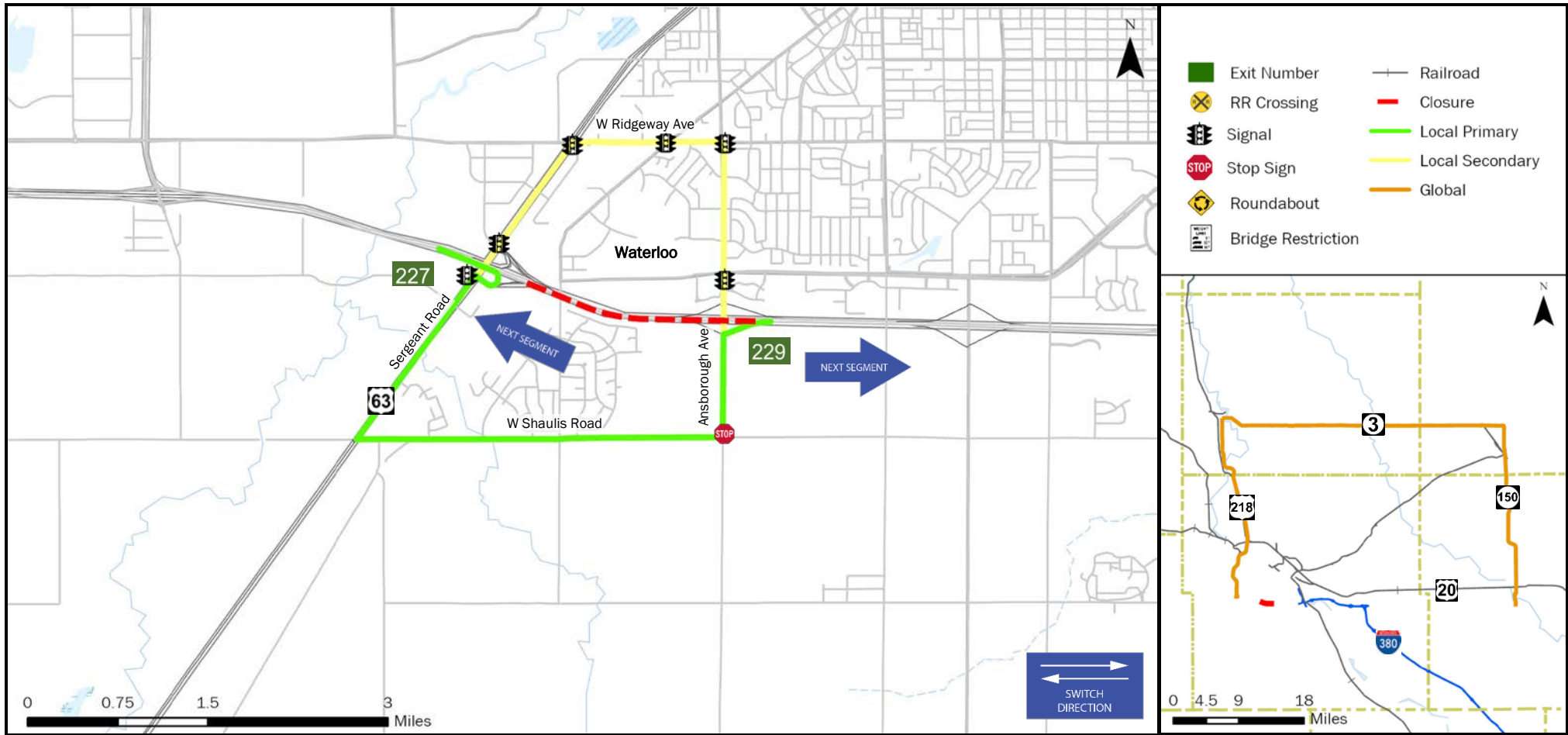
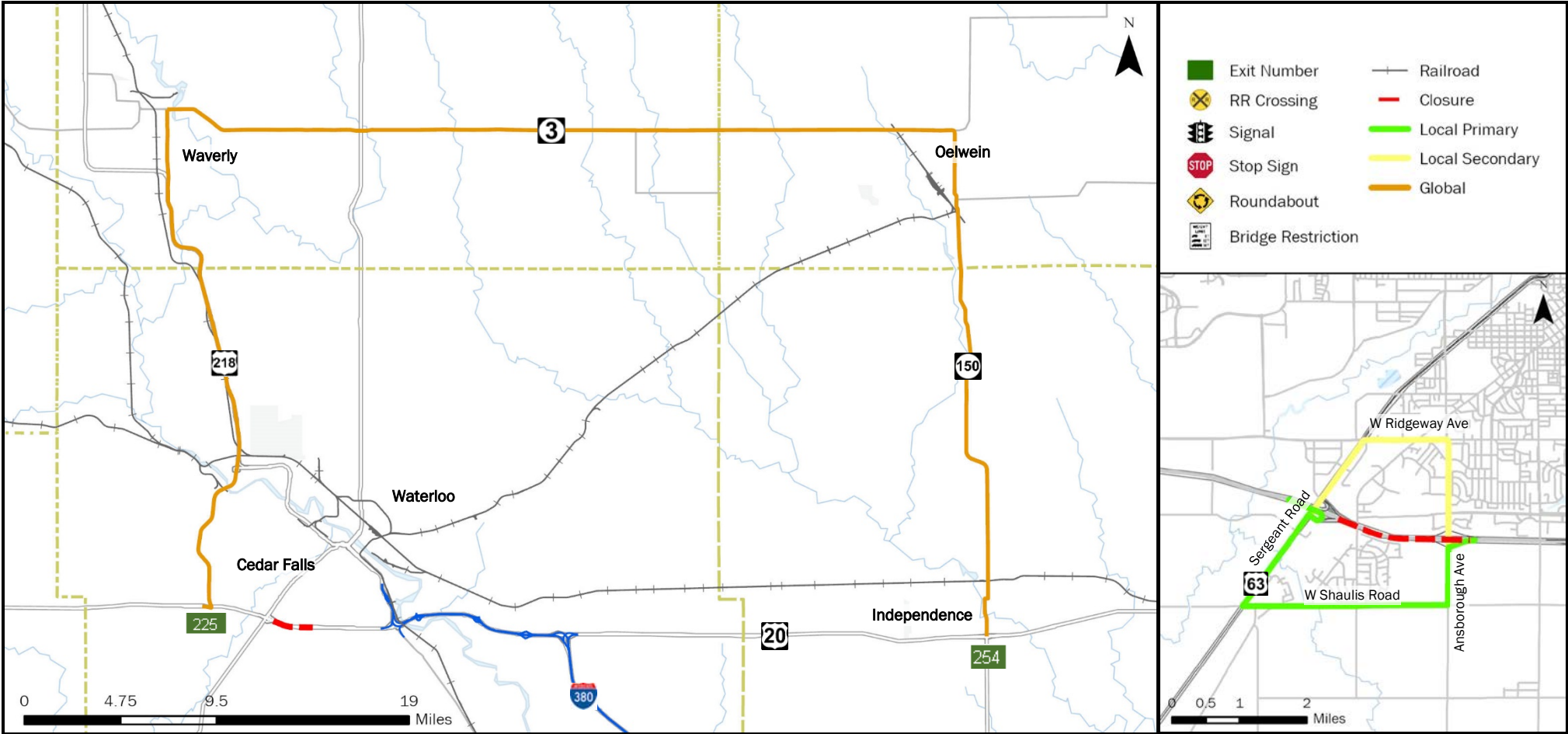


<b>FREEWAY DIVERSION</b>	<b>WATERLOO COUNTY IOWA</b>	<b>US 20 EASTBOUND</b>	<b>FROM:</b> Exit 227 (US 63/Sergeant Rd)	<b>TO:</b> Exit 229 (Ansborough Ave)	<b>PLAN 3507 1/7</b>
------------------------------	---------------------------------	------------------------	---	---	--------------------------



CRITICAL LOCATIONS TO MONITOR FOR LOCAL PRIMARY		AGENCIES TO NOTIFY	
US 20 EB Off Ramp to US 63/Sergeant Rd SB	US 63 NB to Ridgeway Ave EB	Iowa DOT TMC: 515-237-3300	
US 63/Sergeant Rd SB to Shaulis Rd EB	US 20 EB Off Ramp to US 63 NB	Black Hawk County Emergency Communication Center	319-291-2515
Ridgeway Ave EB to Ansborough Ave SB (2 traffic signals)		Iowa DOT Statewide TMC	515-237-3300
Ansborough Ave SB to US 20 EB (1 traffic signal)	Ansborough Ave NB to US 20 EB	Iowa State Patrol Communication Center	800-525-5555
Shaulis Rd EB to Ansborough Ave NB		Buchanan County Emergency Communication Center	319-334-2597
US 63 NB at US 20 WB On Ramp (1 traffic signal)			

<b>LOCAL DETOUR 1/7</b>	<b>GLOBAL DETOUR 2/7</b>	<b>CRITICAL LOCATIONS 3/7</b>	<b>RESPONSE PLAN 4/7</b>	<b>AGENCY CONTACTS 5/7</b>	<b>DMS MESSAGES 6/7</b>	<b>TRAFFIC CONTROL 7/7</b>
---------------------------------	----------------------------------	---------------------------------------	----------------------------------	------------------------------------	---------------------------------	------------------------------------



CRITICAL LOCATIONS TO MONITOR FOR GLOBAL		AGENCIES TO NOTIFY	Iowa DOT TMC: 515-237-3300
US 20 EB to IA 58 NB	IA 150 SB at Oelwein (4 traffic signals)	Black Hawk County Emergency Communication Center	319-291-2515
IA 150 SB at Railroad Crossing (Independence)	IA 150 SB to US 20 EB	Iowa DOT Statewide TMC	515-237-3300
IA 58 NB at Cedar Falls (3 traffic signals)	IA 3 EB to IA 150 SB	Iowa State Patrol Communication Center	800-525-5555
4th St NB to IA 3 EB (5 traffic signals)	IA 3 EB at Railroad Crossing	Buchanan County Emergency Communication Center	319-334-2597
IA 150 SB at Independence (5 traffic signals)	IA 3 EB at Waverly (4 traffic signals)		

<b>FREEWAY DIVERSION</b>	<b>WATERLOO COUNTY IOWA</b>	<b>US 20 EASTBOUND</b>	<b>FROM:</b> Exit 227 (US 63/Sergeant Rd) <b>TO:</b> Exit 229 (Ansborough Ave)	<b>PLAN 3507 3/7</b>
<b>CRITICAL AREAS TO MONITOR</b>				

LOCATION	EXIT	SITUATION	RESPONSE
----------	------	-----------	----------

Local Diversion - Primary

US 20 EB Off Ramp to US 63/Sergeant Rd SB	227	Traffic backing up onto interstate	Provide appropriate message on upstream DMS
US 63/Sergeant Rd SB to Shaulis Rd EB		Traffic backing up and significant delays due to left turning vehicles	Notify local law enforcement
Shaulis Rd EB to Ansborough Ave NB		Traffic backing up and significant delays due to left turning vehicles	Notify local law enforcement
Ansborough Ave NB to US 20 EB	229	Traffic returning to interstate	Monitor location

Local Diversion - Secondary

US 20 EB Off Ramp to US 63 NB	227	Traffic backing up onto interstate	Provide appropriate message on upstream DMS
US 63 NB at US 20 WB On Ramp		Traffic backing up and significant delays due to traffic signal	Notify local law enforcement
US 63 NB to Ridgeway Ave EB		Traffic backing up and significant delays due to traffic signal	Notify local law enforcement
Ridgeway Ave EB to Ansborough Ave SB		Traffic backing up and significant delays due to traffic signal	Notify local law enforcement
Ansborough Ave SB to US 20 EB	229	Traffic backing up and significant delays due to traffic signal	Notify local law enforcement

<b>LOCAL DETOUR 1/7</b>	<b>GLOBAL DETOUR 2/7</b>	<b>CRITICAL LOCATIONS 3/7</b>	<b>RESPONSE PLAN 4/7</b>	<b>AGENCY CONTACTS 5/7</b>	<b>DMS MESSAGES 6/7</b>	<b>TRAFFIC CONTROL 7/7</b>
---------------------------------	----------------------------------	---------------------------------------	----------------------------------	------------------------------------	---------------------------------	------------------------------------

<b>FREEWAY DIVERSION</b>	<b>WATERLOO COUNTY IOWA</b>	<b>US 20 EASTBOUND</b>	<b>FROM:</b> Exit 227 (US 63/Sergeant Rd) <b>TO:</b> Exit 229 (Ansborough Ave)	<b>PLAN 3507 3/7</b>
------------------------------	---------------------------------	------------------------	---	--------------------------

CRITICAL AREAS TO MONITOR

LOCATION	EXIT	SITUATION	RESPONSE
----------	------	-----------	----------

Global Diversion

US 20 EB to IA 58 NB	225	Traffic backing up onto interstate	Provide appropriate message on upstream DMS
IA 58 NB at Cedar Falls		Traffic backing up and significant delays due to traffic signals	Notify local law enforcement
4th St NB to IA 3 EB		Traffic backing up and significant delays due to traffic signals	Notify local law enforcement
IA 3 EB at Waverly		Traffic backing up and significant delays due to traffic signals	Notify local law enforcement
IA 3 EB at Railroad Crossing		Train blocking the crossing	Contact Railroad and notify local law enforcement
IA 3 EB to IA 150 SB		Traffic backing up and significant delays due to yield sign	Notify local law enforcement
IA 150 SB at Oelwein		Traffic backing up and significant delays due to traffic signals	Notify local law enforcement
IA 150 SB at Railroad Crossing (Independence)		Train blocking the crossing	Contact Railroad and notify local law enforcement
IA 150 SB at Independence		Traffic backing up and significant delays due to traffic signals	Notify local law enforcement
IA 150 SB to US 20 EB	254	Traffic returning to interstate	Monitor location

<b>LOCAL DETOUR 1/7</b>	<b>GLOBAL DETOUR 2/7</b>	<b>CRITICAL LOCATIONS 3/7</b>	<b>RESPONSE PLAN 4/7</b>	<b>AGENCY CONTACTS 5/7</b>	<b>DMS MESSAGES 6/7</b>	<b>TRAFFIC CONTROL 7/7</b>
---------------------------------	----------------------------------	---------------------------------------	----------------------------------	------------------------------------	---------------------------------	------------------------------------

<b>FREEWAY DIVERSION</b>	<b>WATERLOO COUNTY IOWA</b>	<b>US 20 EASTBOUND</b>	<b>FROM:</b> Exit 227 (US 63/Sergeant Rd) <b>TO:</b> Exit 229 (Ansborough Ave)	<b>PLAN 3507 4/7</b>
<b>ALTERNATE ROUTE RESPONSE PLAN</b>				

### Minor Impact to Traffic (Less Than 30 Minutes)

Off Peak – Shoulder Blocked	Diversion not implemented: <ul style="list-style-type: none"> <li>• On-scene traffic control</li> <li>• Deploy informational DMS messaging for approaching traffic</li> </ul>
Off Peak – Shoulder and One Lane Blocked	

### Intermediate Impact to Traffic (30 Minutes to 2 Hours)

Peak Period – Shoulder Blocked	Diversion not implemented: <ul style="list-style-type: none"> <li>• On-scene traffic control</li> <li>• Deploy informational DMS messaging for approaching traffic</li> </ul>
Off Period – Shoulder and One Lane Blocked	
Peak Period – Shoulder and One Lane Blocked	<b>Partial Diversion:</b> <ul style="list-style-type: none"> <li>• On-scene traffic control</li> <li>• Deploy informational DMS messaging for approaching traffic</li> <li>• Deploy DMS messaging directing through traffic to use global diversion</li> <li>• Monitor local diversion routes at critical locations as needed</li> </ul>
All Lanes Blocked	<b>Full Diversion:</b> <ul style="list-style-type: none"> <li>• On-scene traffic control</li> <li>• Deploy DMS messaging directing all traffic to use diversion routes</li> <li>• Deploy law enforcement to direct traffic at critical locations</li> </ul>

### Major Impact to Traffic (Greater Than 2 Hours)

Peak Period – Shoulder Blocked	Diversion not implemented: <ul style="list-style-type: none"> <li>• On-scene traffic control</li> <li>• Deploy informational DMS messaging for approaching traffic</li> </ul>
Off Period – Shoulder and One Lane Blocked	
Peak Period – Shoulder and One Lane Blocked	<b>Partial/Discretionary Diversion:</b> <ul style="list-style-type: none"> <li>• Deploy cones, barricades, and other appropriate traffic control devices</li> <li>• Deploy informational DMS messaging for approaching traffic</li> <li>• Deploy DMS messaging directing through traffic to use global diversion</li> <li>• Divert traffic to local diversion routes at discretion of incident commander</li> </ul>
All Lanes Blocked	<b>Full Diversion:</b> <ul style="list-style-type: none"> <li>• Deploy cones, barricades, and other appropriate traffic control devices</li> <li>• Deploy DMS messaging directing all traffic to use diversion routes</li> <li>• Deploy law enforcement to direct traffic at critical locations</li> </ul>

<b>LOCAL DETOUR 1/7</b>	<b>GLOBAL DETOUR 2/7</b>	<b>CRITICAL LOCATIONS 3/7</b>	<b>RESPONSE PLAN 4/7</b>	<b>AGENCY CONTACTS 5/7</b>	<b>DMS MESSAGES 6/7</b>	<b>TRAFFIC CONTROL 7/7</b>
---------------------------------	----------------------------------	---------------------------------------	----------------------------------	------------------------------------	---------------------------------	------------------------------------



<b>FREEWAY DIVERSION</b>	<b>XXXXXX COUNTY IOWA</b>	<b>US 20 EASTBOUND</b>	<b>FROM:</b> Exit 227 (US 63/Sergeant Rd) <b>TO:</b> Exit 229 (Ansborough Ave)	<b>PLAN 3507 5A/7</b>
------------------------------	-------------------------------	------------------------	---	---------------------------

<b>CRITICAL CONTACTS</b>
--------------------------

Iowa State Patrol Comm. Center 800-525-5555	Buchanan County Emergency Communications Center 319-334-2597	Black Hawk County Emergency Communications Center 319-291-2515	Iowa DOT Statewide TMC 515-237-3300
---	---	---	--

## RESPONSIBILITIES

<b>Iowa State Patrol Comm. Center</b>	800-525-5555
Dispatch State Patrol. On-Scene Incident Commander: <ul style="list-style-type: none"> <li>Secure scene.</li> <li>Notify appropriate communications center of incident location, anticipated duration, affected lanes, and identify the incident commander.</li> <li>Coordinate with the communications center regarding diversion route needs.</li> <li>Minimize impact to traffic through coordination of on-scene traffic control.</li> <li>Ensure overweight vehicles are parked.</li> <li>When the incident is safely cleared, notify the appropriate communications center that the diversion route is no longer needed.</li> </ul>	

<b>Buchanan County Emergency Communications Center</b>	319-334-2597
Inform emergency responders and local municipalities that a diversion route is being implemented. <ul style="list-style-type: none"> <li>Monitor critical locations.</li> <li>Provide manual traffic control as needed, or as directed by E911 at critical locations.</li> <li>Notify Iowa DOT statewide TMC of any issues along the implemented diversion route.</li> <li>Coordinate with Iowa DOT statewide TMC regarding any maintenance or traffic control needs.</li> </ul>	

<b>Black Hawk County Emergency Communications Center</b>	319-291-2515
Coordinate with the incident commander as to whether a diversion route is needed and which one should be implemented. <ul style="list-style-type: none"> <li>Notify Iowa DOT statewide TMC of route implemented, incident specific or maintenance needs, and who the incident commander is.</li> <li>Dispatch County Sheriff, local law enforcement, and fire departments as needed.</li> <li>Inform local municipalities and other jurisdictions that a diversion route is being implemented.</li> <li>Deploy law enforcement to direct traffic at critical locations as needed. Emergency Responders:</li> <li>Secure scene.</li> <li>Provide incident information, diversion route recommendations, and towing needs to E911.</li> <li>Minimize impact to traffic.</li> <li>Provide manual traffic control as needed, or as directed by E911 at critical locations.</li> </ul>	

<b>Iowa DOT Statewide TMC</b>	515-237-3300
Deploy informational DMS and 511 messages to alert motorists of construction, delays, incidents, closures, etc. and/or directional DMS messaging to direct traffic to the implemented diversion route. <ul style="list-style-type: none"> <li>Monitor incidents and critical locations along the implemented diversion route.</li> <li>Coordinate with Iowa DOT maintenance facilities regarding traffic control needs.</li> <li>Deploy PDMS and Portable CCTV devices as needed for longer duration incidents.</li> <li>Coordinate with local municipalities regarding the modification of signals, signal timing, or stop signs.</li> <li>Coordinate with railroad authority regarding key crossings along the implemented diversion route.</li> </ul>	

<b>LOCAL DETOUR 1/7</b>	<b>GLOBAL DETOUR 2/7</b>	<b>CRITICAL LOCATIONS 3/7</b>	<b>RESPONSE PLAN 4/7</b>	<b>AGENCY CONTACTS 5/7</b>	<b>DMS MESSAGES 6/7</b>	<b>TRAFFIC CONTROL 7/7</b>
---------------------------------	----------------------------------	---------------------------------------	----------------------------------	------------------------------------	---------------------------------	------------------------------------

Iowa DOT TMC: 515-237-3300

**ENSURE ALL OVERWEIGHT AND OVERSIZE VEHICLES ARE PARKED SAFELY**

<b>FREEWAY DIVERSION</b>	<b>WATERLOO COUNTY IOWA</b>	<b>US 20 EASTBOUND</b>	<b>FROM:</b> Exit 227 (US 63/Sergeant Rd) <b>TO:</b> Exit 229 (Ansborough Ave)	<b>PLAN 3507 5B/7</b>
<b>ADDITIONAL CONTACT INFORMATION</b>				

Iowa State Patrol Comm. Center	
Iowa State Patrol – District 9 Iowa	319-266-2677
State Patrol – District 10	319-283-5521

Buchanan County Emergency Communications Center	
Grundy County Emergency Com.	319-824-6933
Center Fayette County Emergency	563-422-6128
Mgmt Tama County Emergency Mgmt	641-484-3760
Butler County Emergency Mgmt	319-267-9968
Benton County Emergency Mgmt	319-472-2337
Bremer County Emergency Mgmt	319-352-0133

Black Hawk County Emergency Communications Center	
Black Hawk County Sheriff Black	319-291-2587
Hawk County Emergency Mgmt	319-242-1074
Waterloo Police Department	319-291-4339

Iowa DOT Statewide TMC	
Iowa DOT Statewide TMC (Toll Free)	888-449-9672
Iowa DOT Maint. Garage – Waterloo	319-233-3055
Iowa DOT Motor Vehicle	319-464-7197
Enforcement Cedar River Railroad Co.	800-995-7908
Iowa Northern Railroad Co.	800-392-3342
Chicago Central, & Pacific Railroad	800-995-7908

<b>LOCAL DETOUR 1/7</b>	<b>GLOBAL DETOUR 2/7</b>	<b>CRITICAL LOCATIONS 3/7</b>	<b>RESPONSE PLAN 4/7</b>	<b>AGENCY CONTACTS 5/7</b>	<b>DMS MESSAGES 6/7</b>	<b>TRAFFIC CONTROL 7/7</b>
---------------------------------	----------------------------------	---------------------------------------	----------------------------------	------------------------------------	---------------------------------	------------------------------------

Iowa DOT TMC: 515-237-3300

ENSURE ALL OVERWEIGHT AND OVERSIZE VEHICLES ARE PARKED SAFELY

<b>FREEWAY DIVERSION</b>	<b>WATERLOO COUNTY IOWA</b>	<b>US 20 EASTBOUND</b>	<b>FROM:</b> Exit 227 (US 63/Sergeant Rd) <b>TO:</b> Exit 229 (Ansborough Ave)	<b>PLAN 3507 6/7</b>
<b>DMS MESSAGES</b>				

<b>LOCAL PRIMARY</b>	<b>Sign Location</b>	<b>Page 1</b>	<b>Page 2</b>
	US 20 EB @ Union (OH)	ROAD CLOSED AT EXIT 227 DETOUR TO US 63 S	ROAD CLOSED AT EXIT 227 PREPARE TO STOP
	US 218 SB @ Lone Tree (OH)	US 20 E CLOSED AT EXIT 227 USE ALT ROUTE	US 20 E CLOSED AT EXIT 227 EXPECT DELAYS

<b>LOCAL SECONDARY</b>	<b>Sign Location</b>	<b>Page 1</b>	<b>Page 2</b>
	US 20 EB @ Union (OH)	ROAD CLOSED AT EXIT 227 DETOUR TO US 63 N	ROAD CLOSED AT EXIT 227 PREPARE TO STOP
	US 218 SB @ Lone Tree (OH)	US 20 E CLOSED AT EXIT 227 USE ALT ROUTE	US 20 E CLOSED AT EXIT 227 EXPECT DELAYS

<b>GLOBAL</b>	<b>Sign Location</b>	<b>Page 1</b>	<b>Page 2</b>
	US 20 EB @ Union (OH)	ROAD CLOSED AT EXIT 225 DETOUR TO IA 27 N	ROAD CLOSED AT EXIT 225 PREPARE TO STOP
	US 218 SB @ Lone Tree (OH)	US 20 E CLOSED AT EXIT 227 USE ALT ROUTE	US 20 E CLOSED AT EXIT 227 EXPECT DELAYS

<b>LOCAL DETOUR 1/7</b>	<b>GLOBAL DETOUR 2/7</b>	<b>CRITICAL LOCATIONS 3/7</b>	<b>RESPONSE PLAN 4/7</b>	<b>AGENCY CONTACTS 5/7</b>	<b>DMS MESSAGES 6/7</b>	<b>TRAFFIC CONTROL 7/7</b>
---------------------------------	----------------------------------	---------------------------------------	----------------------------------	------------------------------------	---------------------------------	------------------------------------



<b>FREEWAY DIVERSION</b>	<b>WATERLOO COUNTY IOWA</b>	<b>US 20 EASTBOUND</b>	<b>FROM:</b> Exit 227 (US 63/Sergeant Rd) <b>TO:</b> Exit 229 (Ansborough Ave)	<b>PLAN 3507 7/7</b>
<b>TRAFFIC CONTROL</b>				

LOCATION	INITIAL ACTION/RESOURCE	EXTENDED ACTION/RESOURCE
----------	-------------------------	--------------------------

**Local Diversion - Primary**

US 20 EB Off Ramp to US 63/Sergeant Rd SB	Detour signing	Manual traffic control (as needed/peak periods)
US 63/Sergeant Rd SB to Shaulis Rd EB	Detour signing	Monitor location
Shaulis Rd EB to Ansborough Ave NB	Detour signing	Manual traffic control (as needed/peak periods)
Ansborough Ave NB to US 20 EB	Detour signing	Monitor location

**Local Diversion - Secondary**

US 20 EB Off Ramp to US 63 NB	Detour signing	Manual traffic control (as needed/peak periods)
US 63 NB at US 20 WB On Ramp	Detour signing	Manual traffic control (as needed/peak periods)
US 63 NB to Ridgeway Ave EB	Detour signing	Monitor location
Ridgeway Ave EB to Ansborough Ave SB	Detour signing	Manual traffic control (as needed/peak periods)
Ansborough Ave SB to US 20 EB	Detour signing	Manual traffic control (as needed/peak periods)

<b>LOCAL DETOUR 1/7</b>	<b>GLOBAL DETOUR 2/7</b>	<b>CRITICAL LOCATIONS 3/7</b>	<b>RESPONSE PLAN 4/7</b>	<b>AGENCY CONTACTS 5/7</b>	<b>DMS MESSAGES 6/7</b>	<b>TRAFFIC CONTROL 7/7</b>
---------------------------------	----------------------------------	---------------------------------------	----------------------------------	------------------------------------	---------------------------------	------------------------------------

<b>FREEWAY DIVERSION</b>	<b>WATERLOO COUNTY IOWA</b>	<b>US 20 EASTBOUND</b>	<b>FROM:</b> Exit 227 (US 63/Sergeant Rd) <b>TO:</b> Exit 229 (Ansborough Ave)	<b>PLAN 3507 7/7</b>
<b>TRAFFIC CONTROL</b>				

LOCATION	INITIAL ACTION/RESOURCE	EXTENDED ACTION/RESOURCE
----------	-------------------------	--------------------------

**Global Diversion**

US 20 EB to IA 58 NB	Detour signing	Monitor location
IA 58 NB at Cedar Falls	Detour signing	Manual traffic control (as needed/peak periods)
US 218 NB to 4th St NB	Detour signing	Monitor location
4th St NB to IA 3 EB	Detour signing	Manual traffic control (as needed/peak periods)
IA 3 EB at Railroad Crossing	Monitor location Coordinate with local law enforcement as necessary	Coordinate with Railway and local law enforcement as necessary
IA 3 EB to IA 150 SB	Detour signing	Monitor location
IA 150 SB at Oelwein	Detour signing	Manual traffic control (as needed/peak periods)
150 SB at Railroad Crossing (Independence)	Monitor location Coordinate with local law enforcement as necessary	Coordinate with Railway and local law enforcement as necessary
IA 150 SB at Independence	Detour signing	Manual traffic control (as needed/peak periods)

<b>LOCAL DETOUR 1/7</b>	<b>GLOBAL DETOUR 2/7</b>	<b>CRITICAL LOCATIONS 3/7</b>	<b>RESPONSE PLAN 4/7</b>	<b>AGENCY CONTACTS 5/7</b>	<b>DMS MESSAGES 6/7</b>	<b>TRAFFIC CONTROL 7/7</b>
---------------------------------	----------------------------------	---------------------------------------	----------------------------------	------------------------------------	---------------------------------	------------------------------------