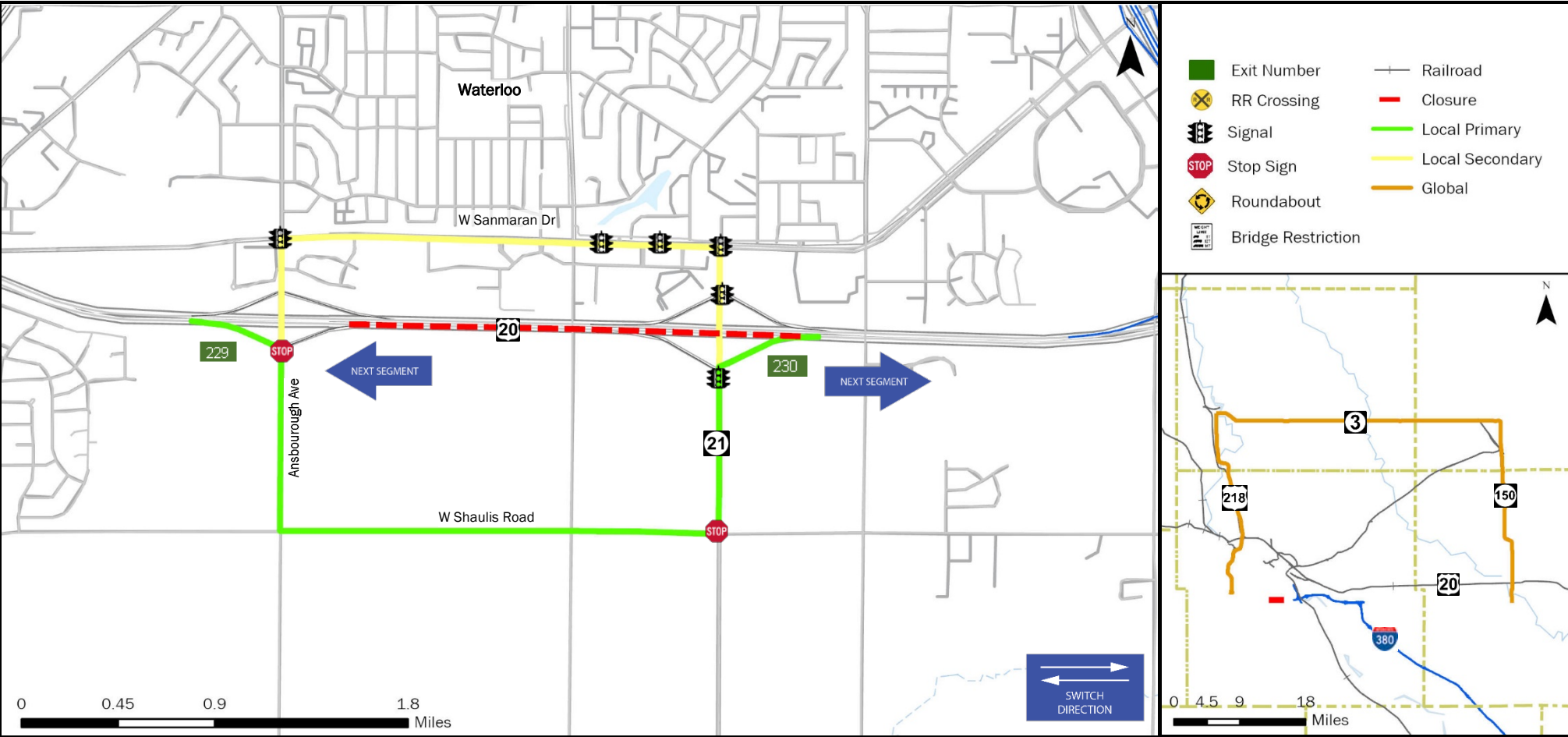
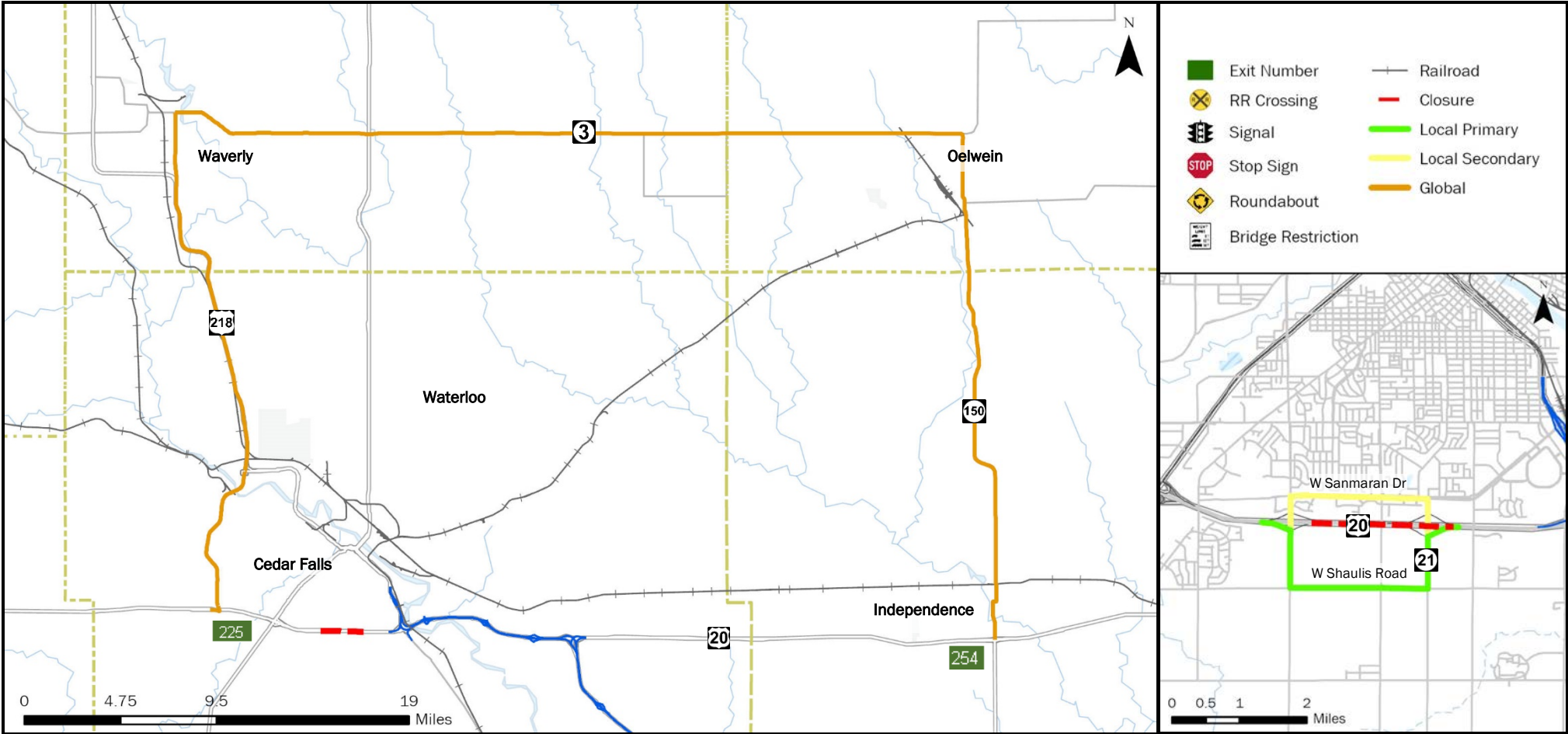


<b>FREEWAY DIVERSION</b>	<b>WATERLOO COUNTY IOWA</b>	<b>US 20 EASTBOUND</b>	<b>FROM:</b> Exit 229 (Ansborough Ave)	<b>TO:</b> Exit 230 (IA 21/Hawkeye Rd)	<b>PLAN 3509</b> <b>1/7</b>
--------------------------	-----------------------------	------------------------	---	---	--------------------------------



<b>CRITICAL LOCATIONS TO MONITOR FOR LOCAL PRIMARY</b>		<b>AGENCIES TO NOTIFY</b>		Iowa DOT TMC: 515-237-3300	
US 20 EB Off Ramp to Ansborough Ave SB Ansborough Ave SB to W. Shaulis Rd EB W. Shaulis Rd EB to IA 21/Hawkeye Rd NB IA 21/Hawkeye Rd NB to US 20 EB US 20 EB Off Ramp to Ansborough Ave NB Ansborough Ave NB to San Marnan Dr EB (2 traffic signals) San Marnan Dr EB to Hawkeye Rd SB (3 traffic signals)		IA 21/Hawkeye Rd NB to US 20 EB IA 21/Hawkeye Rd NB to US 20 Hawkeye Rd SB to US 20 EB (2 traffic signals)		Black Hawk County Emergency Communication Center 319-291-2515 Iowa DOT Statewide TMC 515-237-3300 Iowa State Patrol Communication Center 800-525-5555 Buchanan County Emergency Communication Center 319-334-2597	

<b>LOCAL DETOUR</b> <b>1/7</b>	<b>GLOBAL DETOUR</b> <b>2/7</b>	<b>CRITICAL LOCATIONS</b> <b>3/7</b>	<b>RESPONSE PLAN</b> <b>4/7</b>	<b>AGENCY CONTACTS</b> <b>5/7</b>	<b>DMS MESSAGES</b> <b>6/7</b>	<b>TRAFFIC CONTROL</b> <b>7/7</b>
-----------------------------------	------------------------------------	---	------------------------------------	--------------------------------------	-----------------------------------	--------------------------------------



CRITICAL LOCATIONS TO MONITOR FOR GLOBAL	AGENCIES TO NOTIFY	Iowa DOT TMC: 515-237-3300
US 20 EB to IA 58 NB IA 58 NB at Cedar Falls (3 traffic signals) 4th St NB to IA 3 EB (5 traffic signals)      IA 150 SB to US 20 EB IA 3 EB at Waverly (4 traffic signals)      IA 150 SB at Independence (5 traffic signals) IA 3 EB at Railroad Crossing IA 3 EB to IA 150 SB IA 150 SB at Oelwein (4 traffic signals) IA 150 SB at Railroad Crossing (Independence)	Black Hawk County Emergency Communication Center      319-291-2515 Iowa DOT Statewide TMC      515-237-3300 Iowa State Patrol Communication Center      800-525-5555 Buchanan County Emergency Communication Center      319-334-2597	

<b>FREEWAY DIVERSION</b>	<b>WATERLOO COUNTY IOWA</b>	<b>US 20 EASTBOUND</b>	<b>FROM:</b> Exit 229 (Ansborough Ave) <b>TO:</b> Exit 230 (IA 21/Hawkeye Rd)	<b>PLAN 3509 3/7</b>
<b>CRITICAL AREAS TO MONITOR</b>				

LOCATION	EXIT	SITUATION	RESPONSE
----------	------	-----------	----------

Local Diversion - Primary

US 20 EB Off Ramp to Ansborough Ave SB	229	Traffic backing up onto interstate	Provide appropriate message on upstream DMS
Ansborough Ave SB to W. Shaulis Rd EB		Traffic backing up and significant delays due to stop sign	Notify local law enforcement
W. Shaulis Rd EB to IA 21/Hawkeye Rd NB		Traffic backing up and significant delays due to traffic signal	Notify local law enforcement
IA 21/Hawkeye Rd NB to US 20 EB	230	Traffic backing up and significant delays due to traffic signal	Notify local law enforcement

Local Diversion - Secondary

US 20 EB to Ansborough Ave NB	229	Traffic backing up onto interstate	Provide appropriate message on upstream DMS
Ansborough Ave NB to San Marnan Dr EB		Traffic backing up and significant delays due to traffic signal	Notify local law enforcement
San Marnan Dr EB to Hawkeye Rd SB		Traffic backing up and significant delays due to traffic signal	Notify local law enforcement
Hawkeye Rd SB to US 20 EB	230	Traffic backing up and significant delays due to traffic signal	Notify local law enforcement

<b>LOCAL DETOUR 1/7</b>	<b>GLOBAL DETOUR 2/7</b>	<b>CRITICAL LOCATIONS 3/7</b>	<b>RESPONSE PLAN 4/7</b>	<b>AGENCY CONTACTS 5/7</b>	<b>DMS MESSAGES 6/7</b>	<b>TRAFFIC CONTROL 7/7</b>
---------------------------------	----------------------------------	---------------------------------------	----------------------------------	------------------------------------	---------------------------------	------------------------------------

<b>FREEWAY DIVERSION</b>	<b>WATERLOO COUNTY IOWA</b>	<b>US 20 EASTBOUND</b>	<b>FROM:</b> Exit 229 (Ansborough Ave) <b>TO:</b> Exit 230 (IA 21/Hawkeye Rd)	<b>PLAN 3509 3/7</b>
<b>CRITICAL AREAS TO MONITOR</b>				

LOCATION	EXIT	SITUATION	RESPONSE
----------	------	-----------	----------

**Global Diversion**

US 20 EB to IA 58 NB	225	Traffic backing up onto interstate	Provide appropriate message on upstream DMS
IA 58 NB at Cedar Falls		Traffic backing up and significant delays due to traffic signals	Notify local law enforcement
4th St NB to IA 3 EB		Traffic backing up and significant delays due to traffic signals	Notify local law enforcement
IA 3 EB at Waverly		Traffic backing up and significant delays due to traffic signals	Notify local law enforcement
IA 3 EB at Railroad Crossing		Train blocking the crossing	Contact Railroad and notify local law enforcement
IA 3 EB to IA 150 SB		Traffic backing up and significant delays due to yield sign	Notify local law enforcement
IA 150 SB at Oelwein		Traffic backing up and significant delays due to traffic signals	Notify local law enforcement
IA 150 SB at Railroad Crossing (Independence)		Train blocking the crossing	Contact Railroad and notify local law enforcement
IA 150 SB at Independence		Traffic backing up and significant delays due to traffic signals	Notify local law enforcement
IA 150 SB to US 20 EB	254	Traffic returning to interstate	Monitor location

<b>LOCAL DETOUR 1/7</b>	<b>GLOBAL DETOUR 2/7</b>	<b>CRITICAL LOCATIONS 3/7</b>	<b>RESPONSE PLAN 4/7</b>	<b>AGENCY CONTACTS 5/7</b>	<b>DMS MESSAGES 6/7</b>	<b>TRAFFIC CONTROL 7/7</b>
---------------------------------	----------------------------------	---------------------------------------	----------------------------------	------------------------------------	---------------------------------	------------------------------------

<b>FREEWAY DIVERSION</b>	<b>WATERLOO COUNTY IOWA</b>	<b>US 20 EASTBOUND</b>	<b>FROM:</b> Exit 229 (Ansborough Ave) <b>TO:</b> Exit 230 (IA 21/Hawkeye Rd)	<b>PLAN 3509 4/7</b>
<b>ALTERNATE ROUTE RESPONSE PLAN</b>				

### Minor Impact to Traffic (Less Than 30 Minutes)

Off Peak – Shoulder Blocked	Diversion not implemented: <ul style="list-style-type: none"> <li>• On-scene traffic control</li> <li>• Deploy informational DMS messaging for approaching traffic</li> </ul>
Off Peak – Shoulder and One Lane Blocked	

### Intermediate Impact to Traffic (30 Minutes to 2 Hours)

Peak Period – Shoulder Blocked	Diversion not implemented: <ul style="list-style-type: none"> <li>• On-scene traffic control</li> <li>• Deploy informational DMS messaging for approaching traffic</li> </ul>
Off Period – Shoulder and One Lane Blocked	
Peak Period – Shoulder and One Lane Blocked	<b>Partial Diversion:</b> <ul style="list-style-type: none"> <li>• On-scene traffic control</li> <li>• Deploy informational DMS messaging for approaching traffic</li> <li>• Deploy DMS messaging directing through traffic to use global diversion</li> <li>• Monitor local diversion routes at critical locations as needed</li> </ul>
All Lanes Blocked	<b>Full Diversion:</b> <ul style="list-style-type: none"> <li>• On-scene traffic control</li> <li>• Deploy DMS messaging directing all traffic to use diversion routes</li> <li>• Deploy law enforcement to direct traffic at critical locations</li> </ul>

### Major Impact to Traffic (Greater Than 2 Hours)

Peak Period – Shoulder Blocked	Diversion not implemented: <ul style="list-style-type: none"> <li>• On-scene traffic control</li> <li>• Deploy informational DMS messaging for approaching traffic</li> </ul>
Off Period – Shoulder and One Lane Blocked	
Peak Period – Shoulder and One Lane Blocked	<b>Partial/Discretionary Diversion:</b> <ul style="list-style-type: none"> <li>• Deploy cones, barricades, and other appropriate traffic control devices</li> <li>• Deploy informational DMS messaging for approaching traffic</li> <li>• Deploy DMS messaging directing through traffic to use global diversion</li> <li>• Divert traffic to local diversion routes at discretion of incident commander</li> </ul>
All Lanes Blocked	<b>Full Diversion:</b> <ul style="list-style-type: none"> <li>• Deploy cones, barricades, and other appropriate traffic control devices</li> <li>• Deploy DMS messaging directing all traffic to use diversion routes</li> <li>• Deploy law enforcement to direct traffic at critical locations</li> </ul>

<b>LOCAL DETOUR 1/7</b>	<b>GLOBAL DETOUR 2/7</b>	<b>CRITICAL LOCATIONS 3/7</b>	<b>RESPONSE PLAN 4/7</b>	<b>AGENCY CONTACTS 5/7</b>	<b>DMS MESSAGES 6/7</b>	<b>TRAFFIC CONTROL 7/7</b>
---------------------------------	----------------------------------	---------------------------------------	----------------------------------	------------------------------------	---------------------------------	------------------------------------



<b>FREEWAY DIVERSION</b>	<b>WATERLOO COUNTY IOWA</b>	<b>US 20 EASTBOUND</b>	<b>FROM:</b> Exit 229 (Ansborough Ave) <b>TO:</b> Exit 230 (IA 21/Hawkeye Rd)	<b>PLAN 3509 5A/7</b>
------------------------------	---------------------------------	------------------------	--	---------------------------

<b>CRITICAL CONTACTS</b>
--------------------------

Iowa State Patrol Comm. Center 800-525-5555	Buchanan County Emergency Communications Center 319-334-2597	Black Hawk County Emergency Communications Center 319-291-2515	Iowa DOT Statewide TMC 515-237-3300
---	---	---	--

<b>RESPONSIBILITIES</b>
-------------------------

<b>Iowa State Patrol Comm. Center</b>	800-525-5555
Dispatch State Patrol. On-Scene Incident Commander: <ul style="list-style-type: none"> <li>Secure scene.</li> <li>Notify appropriate communications center of incident location, anticipated duration, affected lanes, and identify the incident commander.</li> <li>Coordinate with the communications center regarding diversion route needs.</li> <li>Minimize impact to traffic through coordination of on-scene traffic control.</li> <li>Ensure overweight vehicles are parked.</li> <li>When the incident is safely cleared, notify the appropriate communications center that the diversion route is no longer needed.</li> </ul>	

<b>Buchanan County Emergency Communications Center</b>	319-334-2597
Inform emergency responders and local municipalities that a diversion route is being implemented. <ul style="list-style-type: none"> <li>Monitor critical locations.</li> <li>Provide manual traffic control as needed, or as directed by E911 at critical locations.</li> <li>Notify Iowa DOT statewide TMC of any issues along the implemented diversion route.</li> <li>Coordinate with Iowa DOT statewide TMC regarding any maintenance or traffic control needs.</li> </ul>	

<b>Black Hawk County Emergency Communications Center</b>	319-291-2515
Coordinate with the incident commander as to whether a diversion route is needed and which one should be implemented. <ul style="list-style-type: none"> <li>Notify Iowa DOT statewide TMC of route implemented, incident specific or maintenance needs, and who the incident commander is.</li> <li>Dispatch County Sheriff, local law enforcement, and fire departments as needed.</li> <li>Inform local municipalities and other jurisdictions that a diversion route is being implemented.</li> <li>Deploy law enforcement to direct traffic at critical locations as needed. Emergency Responders:</li> <li>Secure scene.</li> <li>Provide incident information, diversion route recommendations, and towing needs to E911.</li> <li>Minimize impact to traffic.</li> <li>Provide manual traffic control as needed, or as directed by E911 at critical locations.</li> </ul>	

<b>Iowa DOT Statewide TMC</b>	515-237-3300
Deploy informational DMS and 511 messages to alert motorists of construction, delays, incidents, closures, etc. and/or directional DMS messaging to direct traffic to the implemented diversion route. <ul style="list-style-type: none"> <li>Monitor incidents and critical locations along the implemented diversion route.</li> <li>Coordinate with Iowa DOT maintenance facilities regarding traffic control needs.</li> <li>Deploy PDMS and Portable CCTV devices as needed for longer duration incidents.</li> <li>Coordinate with local municipalities regarding the modification of signals, signal timing, or stop signs.</li> <li>Coordinate with railroad authority regarding key crossings along the implemented diversion route.</li> </ul>	

<b>LOCAL DETOUR 1/7</b>	<b>GLOBAL DETOUR 2/7</b>	<b>CRITICAL LOCATIONS 3/7</b>	<b>RESPONSE PLAN 4/7</b>	<b>AGENCY CONTACTS 5/7</b>	<b>DMS MESSAGES 6/7</b>	<b>TRAFFIC CONTROL 7/7</b>
---------------------------------	----------------------------------	---------------------------------------	----------------------------------	------------------------------------	---------------------------------	------------------------------------

Iowa DOT TMC: 515-237-3300      **ENSURE ALL OVERWEIGHT AND OVERSIZE VEHICLES ARE PARKED SAFELY**

<b>FREEWAY DIVERSION</b>	<b>WATERLOO COUNTY IOWA</b>	<b>US 20 EASTBOUND</b>	<b>FROM:</b> Exit 229 (Ansborough Ave) <b>TO:</b> Exit 230 (IA 21/Hawkeye Rd)	<b>PLAN 3509 5B/7</b>
<b>ADDITIONAL CONTACT INFORMATION</b>				

<b>Iowa State Patrol Comm. Center</b>	
Iowa State Patrol – District 9 Iowa	319-266-2677
State Patrol – District 10	319-283-5521

<b>Buchanan County Emergency Communications Center</b>	
Grundy County Emergency Com.	319-824-6933
Center Fayette County Emergency	563-422-6128
Mgmt Tama County Emergency Mgmt	641-484-3760
Butler County Emergency Mgmt	319-267-9968
Benton County Emergency Mgmt	319-472-2337
Bremer County Emergency Mgmt	319-352-0133

<b>Black Hawk County Emergency Communications Center</b>	
Black Hawk County Sheriff Black	319-291-2587
Hawk County Emergency Mgmt	319-242-1074
Waterloo Police Department	319-291-4339

<b>Iowa DOT Statewide TMC</b>	
Iowa DOT Statewide TMC (Toll Free)	888-449-9672
Iowa DOT Maint. Garage – Waterloo	319-233-3055
Iowa DOT Motor Vehicle	319-464-7197
Enforcement Cedar River Railroad Co.	800-995-7908
Iowa Northern Railroad Co.	800-392-3342
Chicago Central, & Pacific Railroad	800-995-7908

<b>LOCAL DETOUR 1/7</b>	<b>GLOBAL DETOUR 2/7</b>	<b>CRITICAL LOCATIONS 3/7</b>	<b>RESPONSE PLAN 4/7</b>	<b>AGENCY CONTACTS 5/7</b>	<b>DMS MESSAGES 6/7</b>	<b>TRAFFIC CONTROL 7/7</b>
---------------------------------	----------------------------------	---------------------------------------	----------------------------------	------------------------------------	---------------------------------	------------------------------------

Iowa DOT TMC: 515-237-3300

ENSURE ALL OVERWEIGHT AND OVERSIZE VEHICLES ARE PARKED SAFELY

<b>FREEWAY DIVERSION</b>	<b>WATERLOO COUNTY IOWA</b>	<b>US 20 EASTBOUND</b>	<b>FROM:</b> Exit 229 (Ansborough Ave) <b>TO:</b> Exit 230 (IA 21/Hawkeye Rd)	<b>PLAN 3509</b> <b>6/7</b>
<b>DMS MESSAGES</b>				

LOCAL PRIMARY	Sign Location	Page 1	Page 2
	US 20 EB @ Union (OH)	ROAD CLOSED AT EXIT 229 DETOUR TO EX 229 S	ROAD CLOSED AT EXIT 229 PREPARE TO STOP
	US 218 SB @ Lone Tree (OH)	US 20 E CLOSED AT EXIT 229 USE ALT ROUTE	US 20 E CLOSED AT EXIT 229 EXPECT DELAYS

LOCAL SECONDARY	Sign Location	Page 1	Page 2
	US 20 EB @ Union (OH)	ROAD CLOSED AT EXIT 229 DETOUR TO EX 229 N	ROAD CLOSED AT EXIT 229 PREPARE TO STOP
	US 218 SB @ Lone Tree (OH)	US 20 E CLOSED AT EXIT 229 USE ALT ROUTE	US 20 E CLOSED AT EXIT 229 EXPECT DELAYS

GLOBAL	Sign Location	Page 1	Page 2
	US 20 EB @ Union (OH)	ROAD CLOSED AT EXIT 225 DETOUR TO IA 27 N	ROAD CLOSED AT EXIT 225 PREPARE TO STOP
	US 218 SB @ Lone Tree (OH)	US 20 E CLOSED AT EXIT 229 USE ALT ROUTE	US 20 E CLOSED AT EXIT 229 EXPECT DELAYS

<b>LOCAL DETOUR</b> <b>1/7</b>	<b>GLOBAL DETOUR</b> <b>2/7</b>	<b>CRITICAL LOCATIONS</b> <b>3/7</b>	<b>RESPONSE PLAN</b> <b>4/7</b>	<b>AGENCY CONTACTS</b> <b>5/7</b>	<b>DMS MESSAGES</b> <b>6/7</b>	<b>TRAFFIC CONTROL</b> <b>7/7</b>
---------------------------------------	--	---	--	--	---------------------------------------	--



<b>FREEWAY DIVERSION</b>	<b>WATERLOO COUNTY IOWA</b>	<b>US 20 EASTBOUND</b>	<b>FROM:</b> Exit 229 (Ansborough Ave) <b>TO:</b> Exit 230 (IA 21/Hawkeye Rd)	<b>PLAN 3509 7/7</b>
<b>TRAFFIC CONTROL</b>				

LOCATION	INITIAL ACTION/RESOURCE	EXTENDED ACTION/RESOURCE
----------	-------------------------	--------------------------

**Local Diversion - Primary**

US 20 EB Off Ramp to Ansborough Ave SB	Detour signing	Monitor location
Ansborough Ave SB to W. Shaulis Rd EB	Detour signing	Monitor location
W. Shaulis Rd EB to IA 21/Hawkeye Rd NB	Detour signing	Manual traffic control (as needed/peak periods)
IA 21/Hawkeye Rd NB to US 20 EB	Detour signing	Manual traffic control (as needed/peak periods)

**Local Diversion - Secondary**

US 20 EB to Ansborough Ave NB	Detour signing	Monitor location
Ansborough Ave NB to San Marnan Dr EB	Detour signing	Manual traffic control (as needed/peak periods)
San Marnan Dr EB to Hawkeye Rd SB	Detour signing	Manual traffic control (as needed/peak periods)
Hawkeye Rd SB to US 20 EB	Detour signing	Manual traffic control (as needed/peak periods) Manual traffic control (as needed/peak periods)

<b>LOCAL DETOUR 1/7</b>	<b>GLOBAL DETOUR 2/7</b>	<b>CRITICAL LOCATIONS 3/7</b>	<b>RESPONSE PLAN 4/7</b>	<b>AGENCY CONTACTS 5/7</b>	<b>DMS MESSAGES 6/7</b>	<b>TRAFFIC CONTROL 7/7</b>
---------------------------------	----------------------------------	---------------------------------------	----------------------------------	------------------------------------	---------------------------------	------------------------------------

<b>FREEWAY DIVERSION</b>	<b>WATERLOO COUNTY IOWA</b>	<b>US 20 EASTBOUND</b>	<b>FROM:</b> Exit 229 (Ansborough Ave) <b>TO:</b> Exit 230 (IA 21/Hawkeye Rd)	<b>PLAN 3509 7/7</b>
<b>TRAFFIC CONTROL</b>				

<b>LOCATION</b>	<b>INITIAL ACTION/RESOURCE</b>	<b>EXTENDED ACTION/RESOURCE</b>
-----------------	--------------------------------	---------------------------------

**Global Diversion**

US 20 EB to IA 58 NB	Detour signing	Monitor location
IA 58 NB at Cedar Falls	Detour signing	Manual traffic control (as needed/peak periods)
4th St NB to IA 3 EB	Detour signing	Monitor location
IA 3 EB at Waverly	Detour signing	Manual traffic control (as needed/peak periods)
IA 3 EB at Railroad Crossing	Monitor location Coordinate with local law enforcement as necessary	Coordinate with Railway and local law enforcement as necessary
IA 3 EB to IA 150 SB	Detour signing	Monitor location
IA 150 SB at Oelwein	Detour signing	Manual traffic control (as needed/peak periods)
IA 150 SB at Railroad Crossing (Independence)	Monitor location Coordinate with local law enforcement as necessary	Coordinate with Railway and local law enforcement as necessary
IA 150 SB at Independence	Detour signing	Manual traffic control (as needed/peak periods)
IA 150 SB to US 20 EB	Detour signing	Monitor location

<b>LOCAL DETOUR 1/7</b>	<b>GLOBAL DETOUR 2/7</b>	<b>CRITICAL LOCATIONS 3/7</b>	<b>RESPONSE PLAN 4/7</b>	<b>AGENCY CONTACTS 5/7</b>	<b>DMS MESSAGES 6/7</b>	<b>TRAFFIC CONTROL 7/7</b>
---------------------------------	----------------------------------	---------------------------------------	----------------------------------	------------------------------------	---------------------------------	------------------------------------