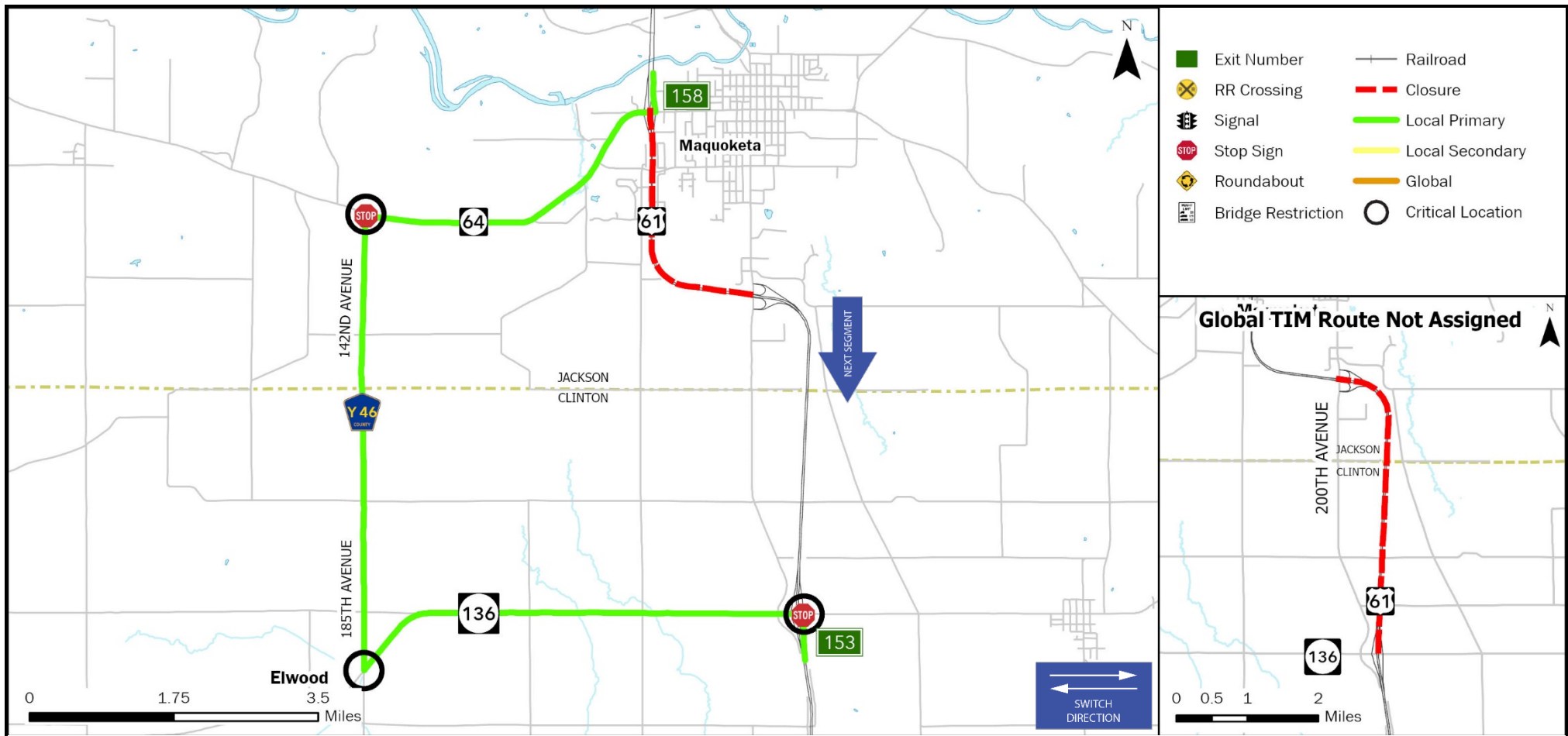


<b>FREEWAY DIVERSION</b>	<b>CLINTON COUNTY IOWA</b>	<b>US-61 NORTHBOUND</b>	<b>FROM:</b> 200th Ave (Exit 156)	<b>TO:</b> IA 64 (Exit 158)	<b>PLAN 5702 1/7</b>
------------------------------	--------------------------------	-------------------------	--------------------------------------	--------------------------------	--------------------------



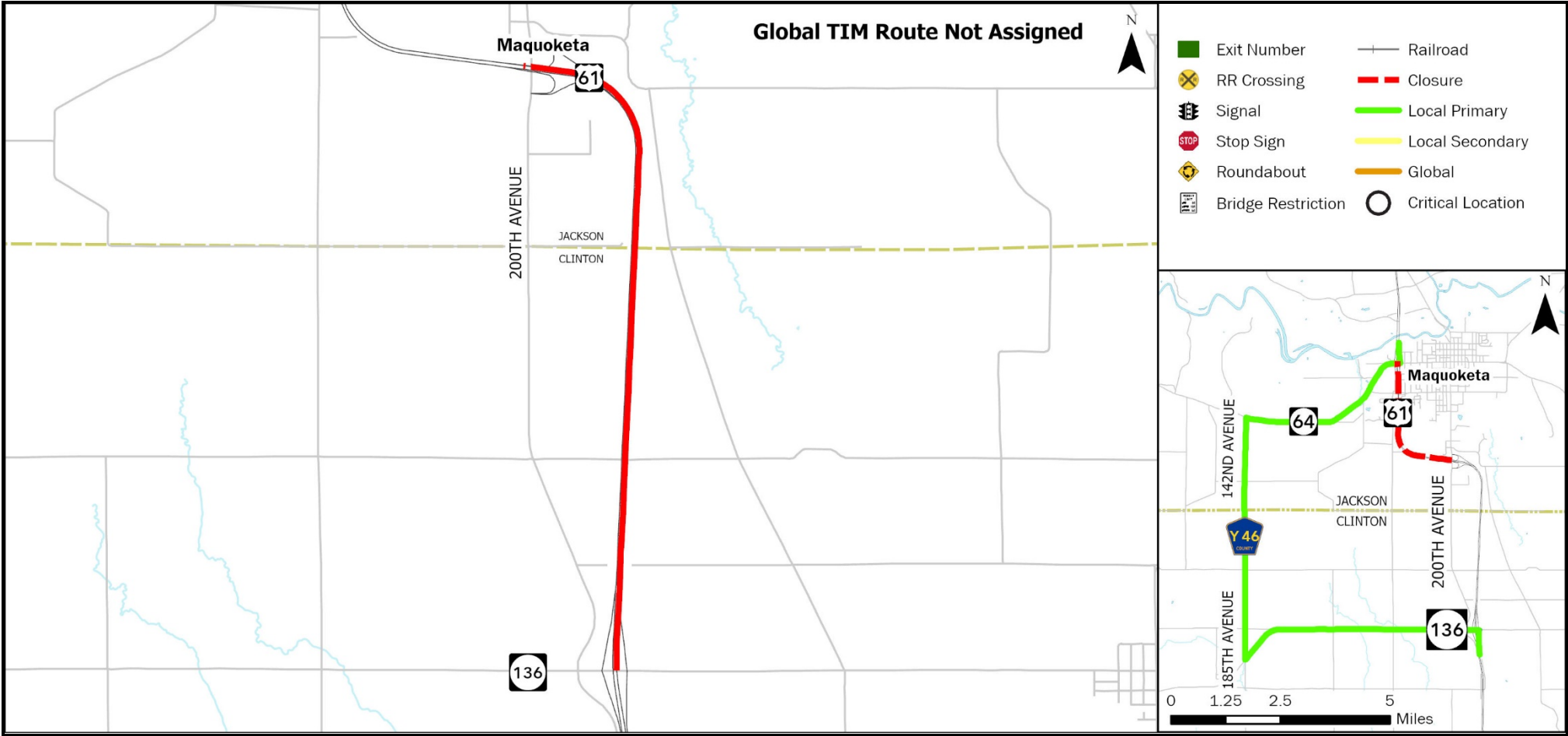
CRITICAL LOCATIONS TO MONITOR FOR LOCAL PRIMARY		AGENCIES TO NOTIFY		Iowa DOT TMC: 515-237-3300
US-61 NB to IA 136 WB IA 136 WB to Y46 (185th Avenue) NB Y46 (185th Avenue) NB to IA 64 EB		Clinton County Emergency Management Agency	563-242-5712	
		Iowa DOT Statewide TMC	515-237-3300	
		Iowa State Patrol Comm. Center	800-525-5555	
		Jackson County Emergency Communication Center	563-652-3312	

<b>LOCAL DETOUR 1/7</b>	<b>GLOBAL DETOUR 2/7</b>	<b>CRITICAL LOCATIONS 3/7</b>	<b>RESPONSE PLAN 4/7</b>	<b>AGENCY CONTACTS 5/7</b>	<b>DMS MESSAGES 6/7</b>	<b>TRAFFIC CONTROL 7/7</b>
---------------------------------	----------------------------------	---------------------------------------	----------------------------------	------------------------------------	---------------------------------	------------------------------------

Iowa DOT TMC: 515-237-3300

**ENSURE ALL OVERWEIGHT AND OVERSIZE VEHICLES ARE PARKED SAFELY**

**Last update: 12/2/2024**



<b>CRITICAL LOCATIONS TO MONITOR FOR GLOBAL</b>	<b>AGENCIES TO NOTIFY</b> Iowa DOT TMC: 515-237-3300
	Clinton County Emergency Management Agency 563-242-5712 Iowa DOT Statewide TMC 515-237-3300 Iowa State Patrol Comm. Center 800-525-5555 Jackson County Emergency Communication Center 563-652-3312

<b>FREEWAY DIVERSION</b>	<b>CLINTON COUNTY IOWA</b>	<b>US-61 NORTHBOUND</b>	<b>FROM:</b> 200th Ave (Exit 156) <b>TO:</b> IA 64 (Exit 158)	<b>PLAN 5702 3/7</b>
<b>CRITICAL AREAS TO MONITOR</b>				

LOCATION	EXIT	SITUATION	RESPONSE
----------	------	-----------	----------

**Local Diversion - Primary**

US-61 NB to IA 136 WB		Traffic backing up onto interstate	Monitor location
IA 136 WB to Y46 (185th Avenue) NB		Traffic backing up due to turning vehicles	Monitor location
Y46 (185th Avenue) NB to IA 64 EB		Traffic backing up due to stop sign	Notify local law enforcement

**Local Diversion - Secondary**

<b>NO LOCAL SECONDARY AVAILABLE</b>
-------------------------------------

**Global Diversion**

<b>NO GLOBAL AVAILABLE</b>
----------------------------

<b>LOCAL DETOUR 1/7</b>	<b>GLOBAL DETOUR 2/7</b>	<b>CRITICAL LOCATIONS 3/7</b>	<b>RESPONSE PLAN 4/7</b>	<b>AGENCY CONTACTS 5/7</b>	<b>DMS MESSAGES 6/7</b>	<b>TRAFFIC CONTROL 7/7</b>
---------------------------------	----------------------------------	---------------------------------------	----------------------------------	------------------------------------	---------------------------------	------------------------------------

<b>FREEWAY DIVERSION</b>	<b>CLINTON COUNTY IOWA</b>	<b>US-61 NORTHBOUND</b>	<b>FROM:</b> 200th Ave (Exit 156) <b>TO:</b> IA 64 (Exit 158)	<b>PLAN 5702 4/7</b>
<b>ALTERNATE ROUTE RESPONSE PLAN</b>				

### Minor Impact to Traffic (Less Than 30 Minutes)

Off Peak – Shoulder Blocked	Diversion not implemented: <ul style="list-style-type: none"> <li>• On-scene traffic control</li> <li>• Deploy informational DMS messaging for approaching traffic</li> </ul>
Off Peak – Shoulder and One Lane Blocked	

### Intermediate Impact to Traffic (30 Minutes to 2 Hours)

Peak Period – Shoulder Blocked	Diversion not implemented: <ul style="list-style-type: none"> <li>• On-scene traffic control</li> <li>• Deploy informational DMS messaging for approaching traffic</li> </ul>
Off Period – Shoulder and One Lane Blocked	
Peak Period – Shoulder and One Lane Blocked	<b>Partial Diversion:</b> <ul style="list-style-type: none"> <li>• On-scene traffic control</li> <li>• Deploy informational DMS messaging for approaching traffic</li> <li>• Deploy DMS messaging directing through traffic to use diversion routes</li> <li>• Monitor local diversion routes at critical locations as needed</li> </ul>
All Lanes Blocked	<b>Full Diversion:</b> <ul style="list-style-type: none"> <li>• On-scene traffic control</li> <li>• Deploy DMS messaging directing all traffic to use diversion routes</li> <li>• Deploy law enforcement to direct traffic at critical locations</li> </ul>

### Major Impact to Traffic (Greater Than 2 Hours)

Peak Period – Shoulder Blocked	Diversion not implemented: <ul style="list-style-type: none"> <li>• On-scene traffic control</li> <li>• Deploy informational DMS messaging for approaching traffic</li> </ul>
Off Period – Shoulder and One Lane Blocked	
Peak Period – Shoulder and One Lane Blocked	<b>Partial/Discretionary Diversion:</b> <ul style="list-style-type: none"> <li>• Deploy cones, barricades, and other appropriate traffic control devices</li> <li>• Deploy informational DMS messaging for approaching traffic</li> <li>• Deploy DMS messaging directing through traffic to use diversion routes</li> <li>• Divert traffic to local diversion routes at discretion of incident commander</li> </ul>
All Lanes Blocked	<b>Full Diversion:</b> <ul style="list-style-type: none"> <li>• Deploy cones, barricades, and other appropriate traffic control devices</li> <li>• Deploy DMS messaging directing all traffic to use diversion routes</li> <li>• Deploy law enforcement to direct traffic at critical locations</li> </ul>

<b>LOCAL DETOUR 1/7</b>	<b>GLOBAL DETOUR 2/7</b>	<b>CRITICAL LOCATIONS 3/7</b>	<b>RESPONSE PLAN 4/7</b>	<b>AGENCY CONTACTS 5/7</b>	<b>DMS MESSAGES 6/7</b>	<b>TRAFFIC CONTROL 7/7</b>
---------------------------------	----------------------------------	---------------------------------------	----------------------------------	------------------------------------	---------------------------------	------------------------------------

<b>FREEWAY DIVERSION</b>	<b>CLINTON COUNTY IOWA</b>	<b>US-61 NORTHBOUND</b>	<b>FROM:</b> 200th Ave (Exit 156) <b>TO:</b> IA 64 (Exit 158)	<b>PLAN 5702 5A/7</b>
------------------------------	--------------------------------	-------------------------	--	---------------------------

### CRITICAL CONTACTS

Clinton County Emergency Management Agency 563-242-5712	Iowa DOT Statewide TMC 515-237-3300	Iowa State Patrol Comm. Center 800-525-5555	Jackson County Emergency Communication Center 563-652-3312
---	--	---	--

### RESPONSIBILITIES

<b>Clinton County Emergency Management Agency</b>	<b>563-242-5712</b>
---	---------------------

Coordinate with the incident commander as to whether a diversion route is needed and which one should be implemented.

- Notify Iowa DOT statewide TMC of route implemented, incident specific or maintenance needs, and who the incident commander is.
- Dispatch County Sheriff, local law enforcement, and fire departments as needed.
- Inform local municipalities and other jurisdictions that a diversion route is being implemented.
- Deploy law enforcement to direct traffic at critical locations as needed.

#### Emergency Responders:

- Secure scene.
- Provide incident information, diversion route recommendations, and towing needs to E911.
- Minimize impact to traffic.
- Provide manual traffic control as needed, or as directed by E911 at critical locations.

<b>Iowa DOT Statewide TMC</b>	<b>515-237-3300</b>
-------------------------------	---------------------

Deploy informational DMS and 511 messages to alert motorists of construction, delays, incidents, closures, etc. and/or directional DMS messaging to direct traffic to the implemented diversion route.

- Monitor incidents and critical locations along the implemented diversion route.
- Coordinate with Iowa DOT maintenance facilities regarding traffic control needs.
- Deploy PDMS and Portable CCTV devices as needed for longer duration incidents.
- Coordinate with local municipalities regarding the modification of signals, signal timing, or stop signs.
- Coordinate with railroad authority regarding key crossings along the implemented diversion route.

<b>Iowa State Patrol Comm. Center</b>	<b>800-525-5555</b>
---------------------------------------	---------------------

Dispatch State Patrol.

#### On-Scene Incident Commander:

- Secure scene.
- Notify appropriate communications center of incident location, anticipated duration, affected lanes, and identify the incident commander.
- Coordinate with the communications center regarding diversion route needs.
- Minimize impact to traffic through coordination of on-scene traffic control.
- Ensure overweight vehicles are parked.
- When the incident is safely cleared, notify the appropriate communications center that the diversion route is no longer needed.

<b>LOCAL DETOUR 1/7</b>	<b>GLOBAL DETOUR 2/7</b>	<b>CRITICAL LOCATIONS 3/7</b>	<b>RESPONSE PLAN 4/7</b>	<b>AGENCY CONTACTS 5/7</b>	<b>DMS MESSAGES 6/7</b>	<b>TRAFFIC CONTROL 7/7</b>
---------------------------------	----------------------------------	---------------------------------------	----------------------------------	------------------------------------	---------------------------------	------------------------------------

Iowa DOT TMC: 515-237-3300

ENSURE ALL OVERWEIGHT AND OVERSIZE VEHICLES ARE PARKED SAFELY

<b>FREEWAY DIVERSION</b>	<b>CLINTON COUNTY IOWA</b>	<b>US-61 NORTHBOUND</b>	<b>FROM:</b> 200th Ave (Exit 156) <b>TO:</b> IA 64 (Exit 158)	<b>PLAN 5702 5A/7</b>
<b>CRITICAL CONTACTS</b>				

<b>Jackson County Emergency Communication Center</b>	<b>563-652-3312</b>
Inform emergency responders and local municipalities that a diversion route is being implemented. <ul style="list-style-type: none"> <li>• Monitor critical locations.</li> <li>• Provide manual traffic control as needed, or as directed by E911 at critical locations.</li> <li>• Notify Iowa DOT statewide TMC of any issues along the implemented diversion route.</li> <li>• Coordinate with Iowa DOT statewide TMC regarding any maintenance or traffic control needs</li> </ul>	

<b>LOCAL DETOUR 1/7</b>	<b>GLOBAL DETOUR 2/7</b>	<b>CRITICAL LOCATIONS 3/7</b>	<b>RESPONSE PLAN 4/7</b>	<b>AGENCY CONTACTS 5/7</b>	<b>DMS MESSAGES 6/7</b>	<b>TRAFFIC CONTROL 7/7</b>
---------------------------------	----------------------------------	---------------------------------------	----------------------------------	------------------------------------	---------------------------------	------------------------------------

<b>FREEWAY DIVERSION</b>	<b>CLINTON COUNTY IOWA</b>	<b>US-61 NORTHBOUND</b>	<b>FROM:</b> 200th Ave (Exit 156) <b>TO:</b> IA 64 (Exit 158)	<b>PLAN 5702 5B/7</b>
<b>ADDITIONAL CONTACT INFORMATION</b>				

Clinton County Emergency Management Agency	
Clinton County Sherriff	563-242-9211
Clinton County Emergency Mgmt	563-242-5712
Clinton County Secondary Roads	563-244-0564

Iowa State Patrol Comm. Center	
Iowa State Patrol – District 12	563-284-9501

Jackson County Emergency Communication Center	
Jackson County Sherriff	563-652-3312
Jackson County Emergency Mgmt	563-542-3911
Jackson County Secondary Roads	563-652-7482

Iowa DOT Statewide TMC	
Iowa DOT Statewide TMC (Toll Free)	888-449-9672
Iowa DOT Maint. Garage – DeWitt	563-659-3550
Iowa DOT Maint. Garage – Maquoketa	563-652-2885
Union Pacific Railroad	888-877-7267
Dakota, Minnesota and Eastern RR Co.	800-339-1080
BNSF Railway Co.	800-832-5452
Iowa DOT Motor Vehicle Enforcement	515-237-3300

<b>LOCAL DETOUR 1/7</b>	<b>GLOBAL DETOUR 2/7</b>	<b>CRITICAL LOCATIONS 3/7</b>	<b>RESPONSE PLAN 4/7</b>	<b>AGENCY CONTACTS 5/7</b>	<b>DMS MESSAGES 6/7</b>	<b>TRAFFIC CONTROL 7/7</b>
---------------------------------	----------------------------------	---------------------------------------	----------------------------------	------------------------------------	---------------------------------	------------------------------------

Iowa DOT TMC: 515-237-3300

ENSURE ALL OVERWEIGHT AND OVERSIZE VEHICLES ARE PARKED SAFELY

<b>FREEWAY DIVERSION</b>	<b>CLINTON COUNTY IOWA</b>	<b>US-61 NORTHBOUND</b>	<b>FROM:</b> 200th Ave (Exit 156) <b>TO:</b> IA 64 (Exit 158)	<b>PLAN 5702 6/7</b>
<b>DMS MESSAGES</b>				

<b>LOCAL PRIMARY</b>	<b>Sign Location</b>	<b>Page 1</b>	<b>Page 2</b>
	<b>NO DMS AVAILABLE</b>		

<b>LOCAL SECONDARY</b>	<b>Sign Location</b>	<b>Page 1</b>	<b>Page 2</b>
	<b>NO DMS AVAILABLE</b>		

<b>GLOBAL</b>	<b>Sign Location</b>	<b>Page 1</b>	<b>Page 2</b>
	<b>NO DMS AVAILABLE</b>		

<b>LOCAL DETOUR 1/7</b>	<b>GLOBAL DETOUR 2/7</b>	<b>CRITICAL LOCATIONS 3/7</b>	<b>RESPONSE PLAN 4/7</b>	<b>AGENCY CONTACTS 5/7</b>	<b>DMS MESSAGES 6/7</b>	<b>TRAFFIC CONTROL 7/7</b>
---------------------------------	----------------------------------	---------------------------------------	----------------------------------	------------------------------------	---------------------------------	------------------------------------



<b>FREEWAY DIVERSION</b>	<b>CLINTON COUNTY IOWA</b>	<b>US-61 NORTHBOUND</b>	<b>FROM:</b> 200th Ave (Exit 156) <b>TO:</b> IA 64 (Exit 158)	<b>PLAN 5702</b> <b>7/7</b>
<b>TRAFFIC CONTROL</b>				

<b>LOCATION</b>	<b>INITIAL ACTION/RESOURCE</b>	<b>EXTENDED ACTION/RESOURCE</b>
-----------------	--------------------------------	---------------------------------

**Local Diversion - Primary**

US-61 NB to IA 136 WB	Monitor location	Detour signing
IA 136 WB to Y46 (185th Avenue) NB	Monitor location	Detour signing
Y46 (185th Avenue) NB to IA 64 EB	Monitor location	Detour signing

**Local Diversion - Secondary**

<b>NO LOCAL SECONDARY AVAILABLE</b>
-------------------------------------

**Global Diversion**

<b>NO GLOBAL AVAILABLE</b>
----------------------------

<b>LOCAL DETOUR</b> <b>1/7</b>	<b>GLOBAL DETOUR</b> <b>2/7</b>	<b>CRITICAL LOCATIONS</b> <b>3/7</b>	<b>RESPONSE PLAN</b> <b>4/7</b>	<b>AGENCY CONTACTS</b> <b>5/7</b>	<b>DMS MESSAGES</b> <b>6/7</b>	<b>TRAFFIC CONTROL</b> <b>7/7</b>
-----------------------------------	------------------------------------	---	------------------------------------	--------------------------------------	-----------------------------------	--------------------------------------