

**FREEWAY
DIVERSION**

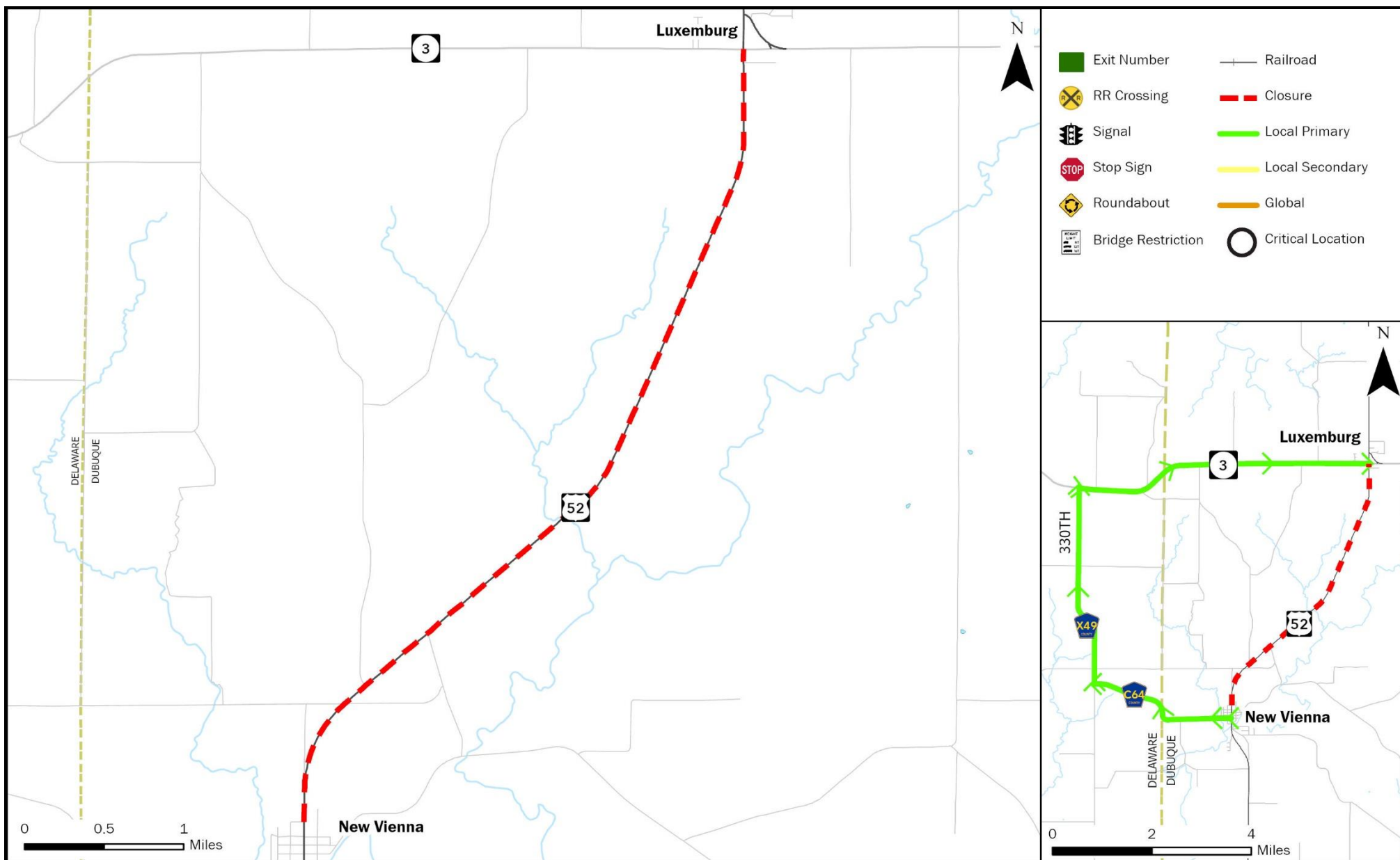
**DUBUQUE
COUNTY IOWA**

US 52 NORTHBOUND

FROM:
New Vienna

TO:
IA 3

**PLAN 5945
2/4**



**LOCAL
DETOUR
1/4**

**GLOBAL
DETOUR
2/4**

**AGENCY
CONTACTS
3/4**

**DMS
MESSAGES
4/4**

FREEWAY DIVERSION	DUBUQUE COUNTY IOWA	US 52 NORTHBOUND	FROM: New Vienna TO: IA 3	PLAN 5945 3A/4
CRITICAL CONTACTS				

Local Diversion - Primary

Agency	Phone	Email
Iowa DOT Statewide TMC	515-237-3300	
Cedar Falls State Radio	319-277-4761	
Dubuque County Sheriff’s Department	563-583-1711	
Delaware County Sheriff’s Department	563-927-3135	

Local Diversion - Secondary

Agency	Phone	Email
NO LOCAL SECONDARY AVAILABLE		

Global

Agency	Phone	Email
NO GLOBAL AVAILABLE		

LOCAL DETOUR 1/4	GLOBAL DETOUR 2/4	AGENCY CONTACTS 3/4	DMS MESSAGES 4/4
---------------------------------	----------------------------------	------------------------------------	---------------------------------

FREEWAY DIVERSION	DUBUQUE COUNTY IOWA	US 52 NORTHBOUND	FROM: New Vienna TO: IA 3	PLAN 5945 3B/4
ADDITIONAL CONTACT INFORMATION				

Iowa Department of Transportation	
Iowa DOT Maintenance Garage	563-582-3063
Iowa DOT District 6 Office	319-364-0235

Dubuque County Sheriff's Department	
Dubuque County Sheriff	563-583-1711
Delaware County Sheriff	563-927-3135

Iowa State Patrol	
Iowa State Patrol District 10	319-283-5521

LOCAL DETOUR 1/4	GLOBAL DETOUR 2/4	AGENCY CONTACTS 3/4	DMS MESSAGES 4/4
---------------------------------	----------------------------------	------------------------------------	---------------------------------

FREEWAY DIVERSION	DUBUQUE COUNTY IOWA	US 52 NORTHBOUND	FROM: New Vienna TO: IA 3	PLAN 5945 4/4
DMS MESSAGES ✓				

LOCAL PRIMARY	Sign Location	Page 1	Page 2
	Applicable On-Route PDMS Messages	US 52 N CLOSED AT CHRCH	DETOUR TO C64 W
	Applicable Off-Route PDMS Messages	US 52 N CLOSED AT CHRCH	USE ALT ROUTE

LOCAL SECONDARY	Sign Location	Page 1	Page 2
	NO LOCAL SECONDARY AVAILABLE		

GLOBAL	Sign Location	Page 1	Page 2
	NO GLOBAL AVAILABLE		

LOCAL DETOUR 1/4	GLOBAL DETOUR 2/4	AGENCY CONTACTS 3/4	DMS MESSAGES 4/4
---------------------------------	----------------------------------	------------------------------------	---------------------------------