

**FREEWAY
DIVERSION**

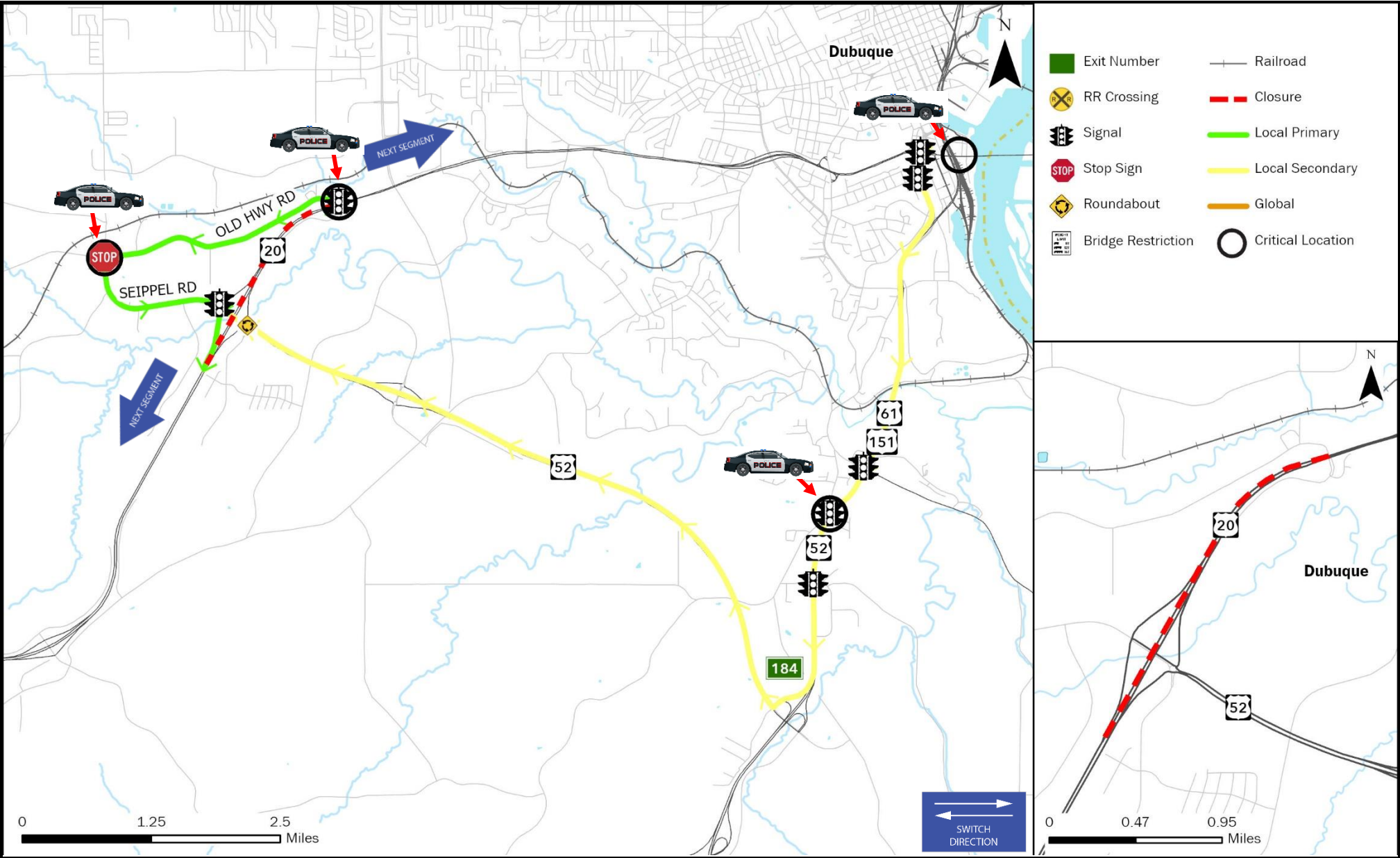
**DUBUQUE
COUNTY IOWA**

US 20 WESTBOUND

FROM:
Old Highway Road

TO:
US 52 (SW Arterial)

PLAN 5977
1/4



LOCAL DETOUR 1/4

GLOBAL DETOUR 2/4

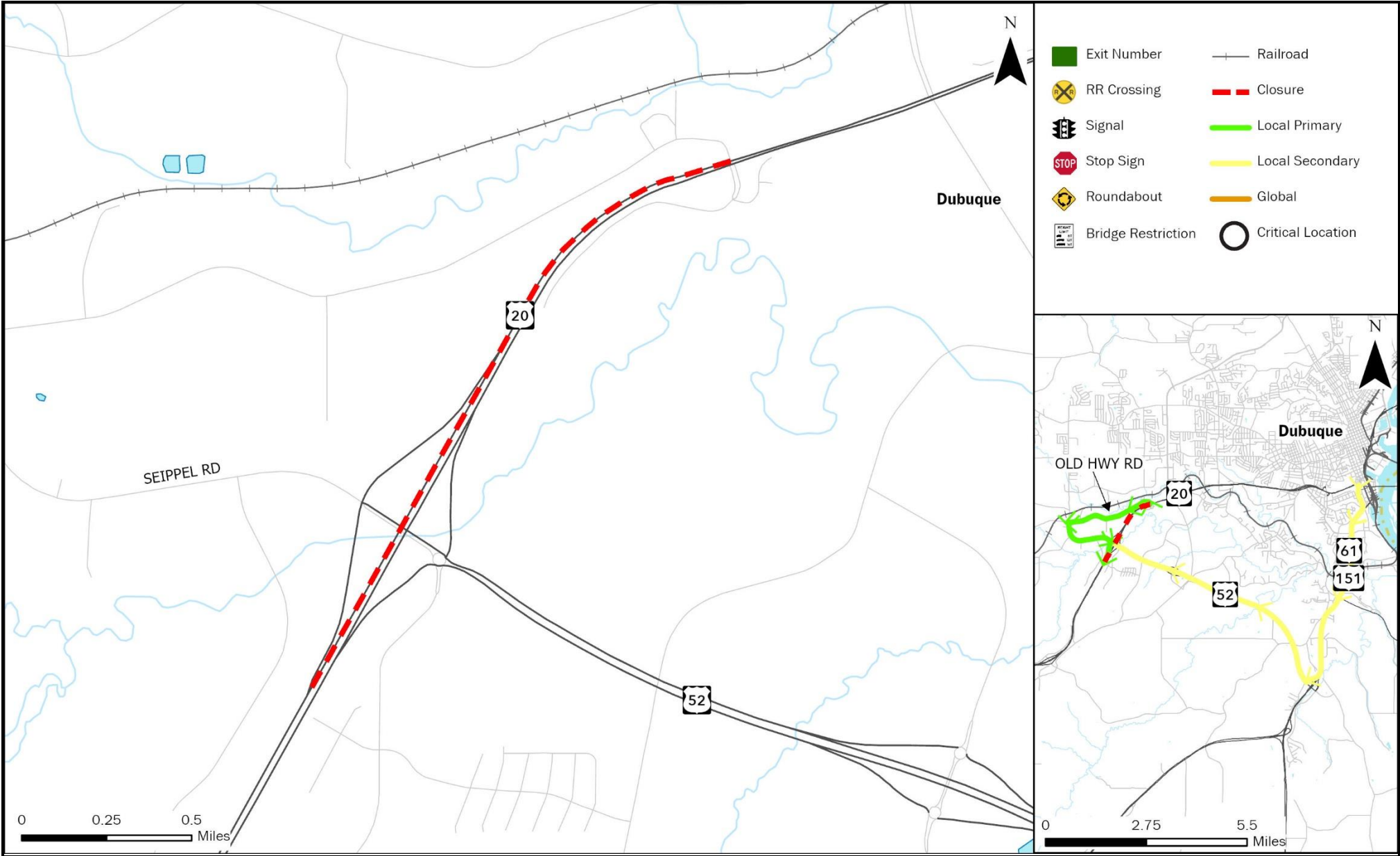
AGENCY CONTACTS

DMS MESSAGES 4/4

Iowa DOT TMC: 515-237-3300

ENSURE ALL OVERWEIGHT AND OVERSIZE VEHICLES ARE PARKED SAFE

LY Last update: 4/11/2025



FREEWAY DIVERSION	DUBUQUE COUNTY IOWA	US 20 WESTBOUND	FROM: Old Highway Road TO: US 52 (SW Arterial)	PLAN 5977 3A/4
CRITICAL CONTACTS				

Local Diversion - Primary

Agency	Phone	Email
Iowa DOT Statewide TMC	515-237-3300	
Cedar Falls State Radio	319-277-4761	
Dubuque County Sheriff’s Department	563-583-1711	

Local Diversion - Secondary

Agency	Phone	Email
Iowa DOT Statewide TMC	515-237-3300	
Cedar Falls State Radio	319-277-4761	
Dubuque County Sheriff’s Department	563-583-1711	

Global

Agency	Phone	Email
NO GLOBAL AVAILABLE		

LOCAL DETOUR 1/4	GLOBAL DETOUR 2/4	AGENCY CONTACTS 3/4	DMS MESSAGES 4/4
---------------------------------	----------------------------------	------------------------------------	---------------------------------

FREEWAY DIVERSION	DUBUQUE COUNTY IOWA	US 20 WESTBOUND	FROM: Old Highway Road TO: US 52 (SW Arterial)	PLAN 5977 3B/4
ADDITIONAL CONTACT INFORMATION				

Iowa Department of Transportation	
Iowa DOT Maintenance Garage	563-582-3063
Iowa DOT District 6 Office	319-364-0235
Illinois DOT District 2 Highway Division	815-284-2271
Wisconsin DOT District 1 Office	608-246-3800

City of Dubuque	
City of Dubuque Engineer	563-589-4270

City of Dubuque Police Department	
City of Dubuque Police Department	563-589-4415

Dubuque County Sheriff's Department	
Dubuque County Sheriff	563-583-1711
Jo Daviess County Sheriff	815-777-2141
Grant County Sheriff	608-723-2157

Iowa State Patrol	
Iowa State Patrol District 10	319-283-5521
Illinois State Patrol	815-239-1152
Wisconsin State Patrol	608-846-8500

LOCAL DETOUR 1/4	GLOBAL DETOUR 2/4	AGENCY CONTACTS 3/4	DMS MESSAGES 4/4
---------------------------------	----------------------------------	------------------------------------	---------------------------------

Iowa DOT TMC: 515-237-3300

ENSURE ALL OVERWEIGHT AND OVERSIZE VEHICLES ARE PARKED SAFELY

FREEWAY DIVERSION	DUBUQUE COUNTY IOWA	US 20 WESTBOUND	FROM: Old Highway Road TO: US 52 (SW Arterial)	PLAN 5977 4/4
DMS MESSAGES ✓				

LOCAL PRIMARY	Sign Location	Page 1	Page 2
	IA 32 SB @ Chavenelle - SM	US 20 AT OLD HWY CLOSED	USE ALT ROUTE
	US 20 WB @ Dubuque - OH	US 20 W CLOSED AT OLD HIGHWAY RD USE OLD HIGHWAY RD	
	US 61 SB @ Greyhound - SM	US 20 AT OLD HWY CLOSED	USE ALT ROUTE
	Applicable On-Route PDMS Messages	US 20 AT OLD HWY CLOSED	DETOUR TO OLD HWY
	Applicable Off-Route PDMS Messages	US 20 AT OLD HWY CLOSED	USE ALT ROUTE

LOCAL DETOUR 1/4	GLOBAL DETOUR 2/4	AGENCY CONTACTS 3/4	DMS MESSAGES 4/4
---------------------------------	----------------------------------	------------------------------------	---------------------------------

FREEWAY DIVERSION	DUBUQUE COUNTY IOWA	US 20 WESTBOUND	FROM: Old Highway Road TO: US 52 (SW Arterial)	PLAN 5977 4/4
DMS MESSAGES ✓				

LOCAL SECONDARY	Sign Location	Page 1	Page 2
	IA 32 SB @ Chavenelle - SM	US 20 AT OLD HWY CLOSED	USE ALT ROUTE
	US 20 WB @ Dubuque - OH	US 20 W CLOSED AT OLD HIGHWAY RD USE ALT ROUTE	
	US 61 SB @ Greyhound - SM	US 20 AT OLD HWY CLOSED	DETOUR EXIT 184 US 52 N
	Applicable On-Route PDMS Messages	US 20 AT OLD HWY CLOSED	USE ALT ROUTE
	Applicable PDMS Messages on US 61 S Before US 20	US 20 AT OLD HWY CLOSED	DETOUR EXIT 184 US 52 N

GLOBAL	Sign Location	Page 1	Page 2
	NO GLOBAL AVAILABLE		

LOCAL DETOUR 1/4	GLOBAL DETOUR 2/4	AGENCY CONTACTS 3/4	DMS MESSAGES 4/4
---------------------------------	----------------------------------	------------------------------------	---------------------------------