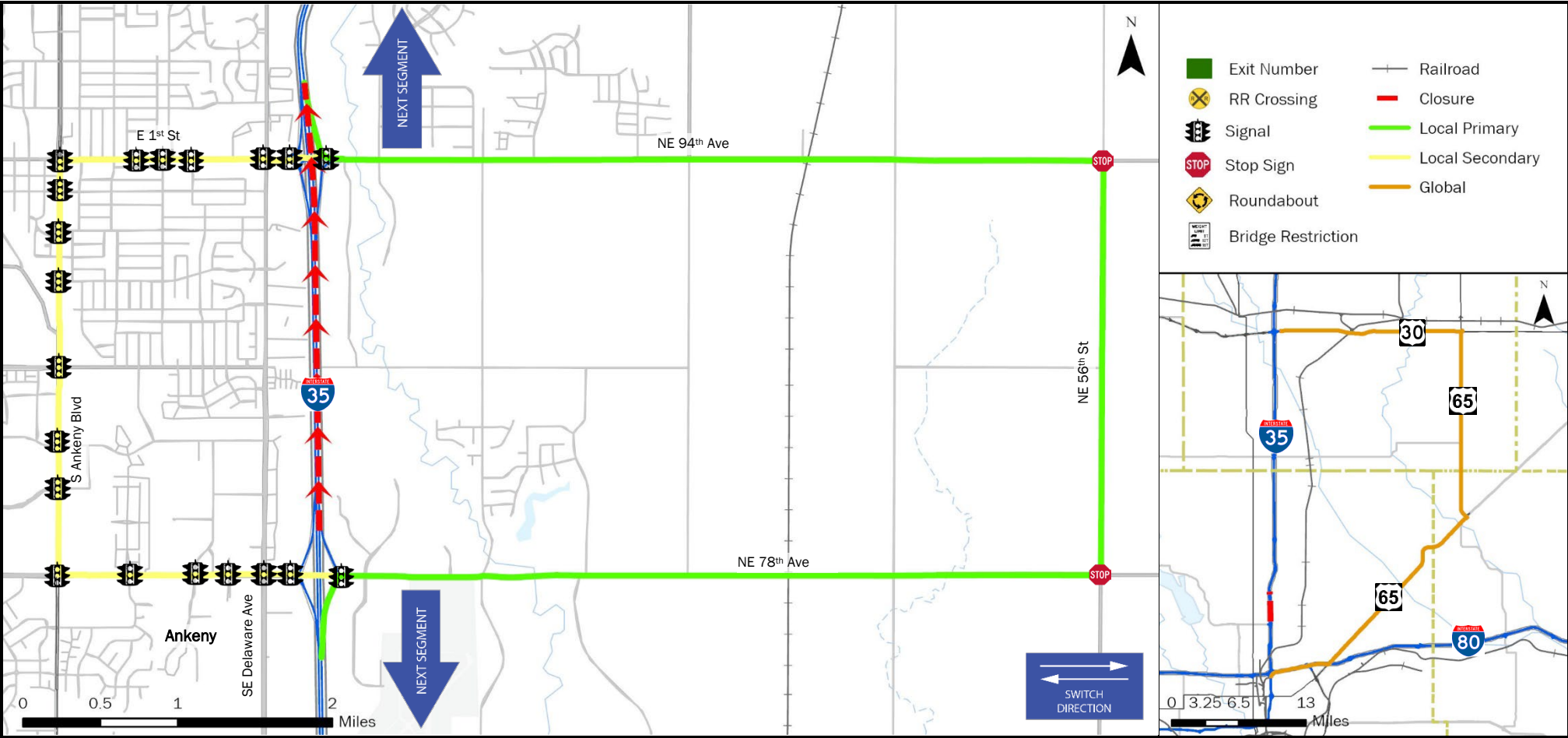


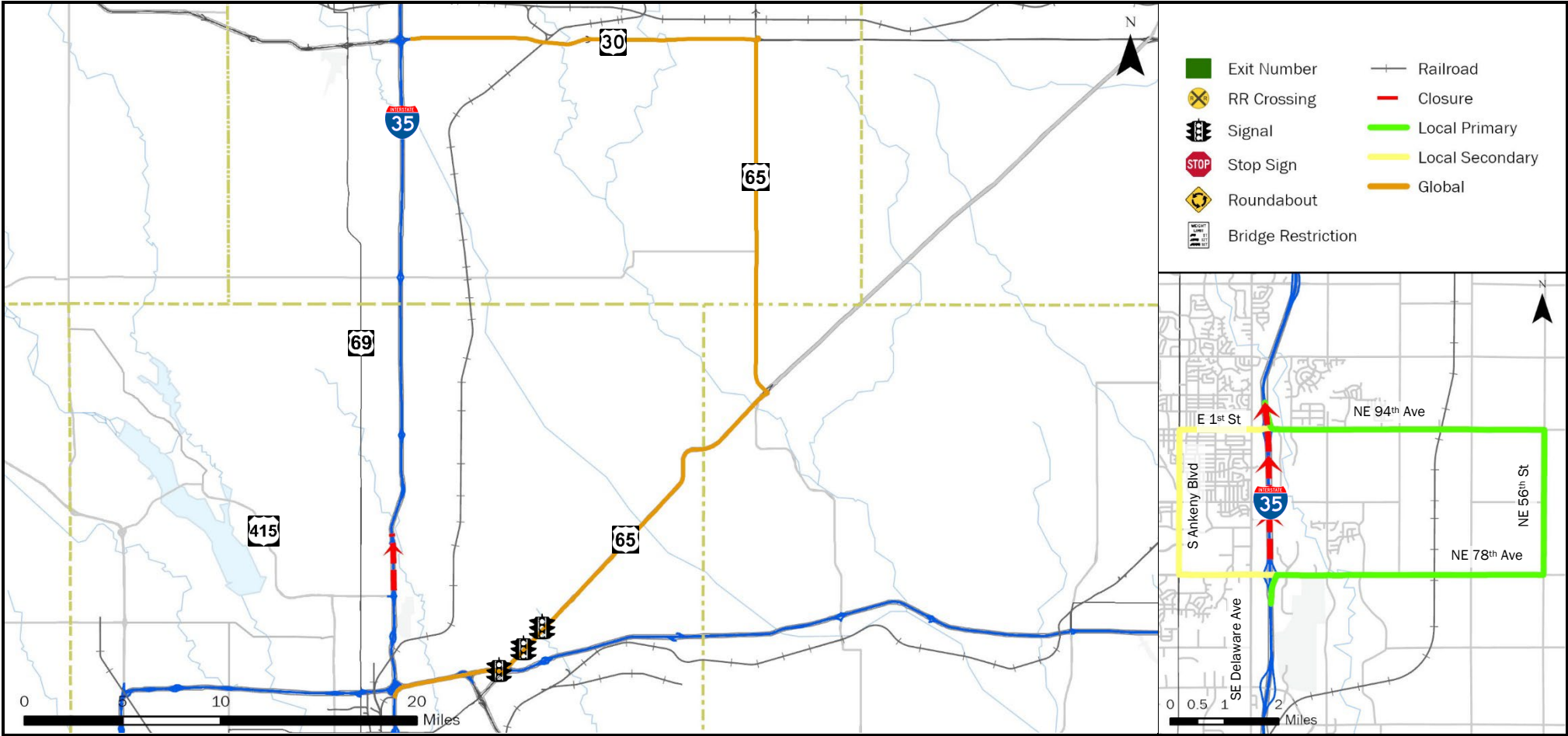
FREEWAY DIVERSION	POLK COUNTY IOWA	I-35 NORTHBOUND	FROM: Exit 90 (SE Oralabor Road)	TO: Exit 92 (E 1st Street)	PLAN 6211 1/7
------------------------------	-----------------------------	----------------------------	--	--------------------------------------	--------------------------



CRITICAL LOCATIONS TO MONITOR FOR LOCAL PRIMARY	AGENCIES TO NOTIFY	Iowa DOT TMC: 515-237-3300
NB I-35 Off Ramp to SE Oralabor Rd./NE 78 th Ave EB (1 Signal) NE 78 th Ave at Union Pacific Railroad Crossing NE 78 th Ave EB to NE 56 th St NB NE 56 th St NB to NE 94 th Ave WB NE 94 th Ave/E. 1 st St. at Union Pacific Railroad Crossing E. 1 st St./NE 94 th Ave WB to I-35 NB On Ramp	Polk County Communications 515-286-3333 Iowa DOT Statewide TMC 515-237-3300 Iowa State Patrol Comm. Center 515-323-4360 Ankeny Traffic Engineer 515-494-7237 Union Pacific Railroad Company (UP) 888-877-7267	

LOCAL DETOUR 1/7	GLOBAL DETOUR 2/7	CRITICAL LOCATIONS 3/7	RESPONSE PLAN 4/7	AGENCY CONTACTS 5/7	DMS MESSAGES 6/7	TRAFFIC CONTROL 7/7
---------------------------------	----------------------------------	---------------------------------------	----------------------------------	------------------------------------	---------------------------------	------------------------------------

FREEWAY DIVERSION	POLK COUNTY IOWA	I-35 NORTHBOUND	FROM: Exit 90 (SE Oralabor Road)	TO: Exit 92 (E 1st Street)	PLAN 6211 2/7
------------------------------	-----------------------------	----------------------------	---	--------------------------------------	--------------------------------



CRITICAL LOCATIONS TO MONITOR FOR GLOBAL	AGENCIES TO NOTIFY	Iowa DOT TMC: 515-237-3300
I-35 NB Off Ramp to I-80 EB I-80 EB to US 65 NB Off Ramp (1 Signal) US 65 NB Between I-80 and US 65/IA330 Interchange (2 Signals) US 65 NB to US 65 NB Off Ramp at US 65/IA 330 Interchange continuing on US 65 NB US 65 NB to US 30 WB US 30 WB to I-35 NB	Polk County Communications Iowa DOT Statewide TMC Iowa State Patrol Comm. Center Ankeny Traffic Engineer Union Pacific Railroad Company (UP)	515-286-3333 515-237-3300 515-323-4360 515-494-7237 888-877-7267

LOCAL DETOUR 1/7	GLOBAL DETOUR 2/7	CRITICAL LOCATIONS 3/7	RESPONSE PLAN 4/7	AGENCY CONTACTS 5/7	DMS MESSAGES 6/7	TRAFFIC CONTROL 7/7
---------------------------------	----------------------------------	---------------------------------------	----------------------------------	------------------------------------	---------------------------------	------------------------------------

FREEWAY DIVERSION	POLK COUNTY IOWA	I-35 NORTHBOUND	FROM: Exit 90 (SE Oralabor Road) TO: Exit 92 (E 1st Street)	PLAN 6211 3/7
CRITICAL AREAS TO MONITOR				

LOCATION	EXIT	SITUATION	RESPONSE
-----------------	-------------	------------------	-----------------

Local Diversion - Primary

NB I-35 Off Ramp to SE Oralabor Rd./NE 78th Ave EB (1 Signal)	90	Traffic backing up on ramp due to signalized intersection	Provide appropriate message on upstream DMS. Confirm City of Ankeny has been notified.
NE 78th Ave at Union Pacific Railroad Crossing		Train blocking the crossing (Gates/Flashers)	Contact Union Pacific Railroad and Notify local law enforcement.
NE 78th Ave EB to NE 56th St NB		Traffic backing up and significant delays due to left turn	Notify local law enforcement
NE 56th St NB to NE 94th Ave WB		Traffic backing up and significant delays due to left turn	Notify local law enforcement
NE 94th Ave at Union Pacific Railroad Crossing		Train blocking the crossing (Gates/Flashers)	Contact Union Pacific Railroad and Notify local law enforcement.
E. 1st St./NE 94th WB to I-35 NB On Ramp	92	Traffic backing up on ramp due to signalized intersection	Monitor location. Confirm City of Ankeny has been notified.

Local Diversion - Secondary

NB I-35 Off Ramp to SE Oralabor Rd WB (1 Signal)	90	Traffic backing up on ramp due to signalized intersection	Provide appropriate message on upstream DMS. Confirm City of Ankeny has been notified.
SE Oralabor Rd Between I-35 and US 69/South Ankeny Blvd. (6 Signals)		Traffic backing up due to 6 signalized intersections	Confirm City of Ankeny has been notified.
SE Oralabor Rd WB to US 69/South Ankeny Blvd. NB		Traffic backing up and significant delays due to right turn	Notify local law enforcement
US 69/South Ankeny Blvd. NB Between Oralabor Rd and E. 1st St. (7 Signals)		Traffic backing up due to 7 signalized intersections	Confirm City of Ankeny has been notified.
US69/South Ankeny Blvd. NB to E. 1st St. WB		Traffic backing up and significant delays due to right turn	Notify local law enforcement
E. 1st St. WB to I-35 NB (5 Signals)	92	Traffic backing up on ramp due to signalized intersection	Confirm City of Ankeny has been notified.

LOCAL DETOUR 1/7	GLOBAL DETOUR 2/7	CRITICAL LOCATIONS 3/7	RESPONSE PLAN 4/7	AGENCY CONTACTS 5/7	DMS MESSAGES 6/7	TRAFFIC CONTROL 7/7
---------------------------------	----------------------------------	---------------------------------------	----------------------------------	------------------------------------	---------------------------------	------------------------------------

FREEWAY DIVERSION	POLK COUNTY IOWA	I-35 NORTHBOUND	FROM: Exit 90 (SE Oralabor Road) TO: Exit 92 (E 1st Street)	PLAN 6211 3/7
CRITICAL AREAS TO MONITOR				

Global Diversion

I-35 NB Off Ramp to I-80 EB	137B	East Mixmaster Interchange	Provide appropriate message on upstream DMS
I-80 EB to US 65 NB Off Ramp (1 Signal)	142	Traffic backing up on ramp due to signalized intersection	Monitor location. Confirm City of Altoona has been notified.
US 65 NB Between I-80 and US 65/IA330 Interchange (2 Signals)		Traffic backing up due to 2 signalized intersections	Monitor location. Confirm City of Altoona has been notified.
US 65 NB to US 65 NB Off Ramp at US 65/IA 330 Interchange continuing on US 65 NB	98	Traffic backing up on ramp and significant delays due to left turn	Notify local law enforcement
US 65 NB to US 30 WB		Traffic backing up and significant delays due to left turn	Notify local law enforcement
US 30 EB to I-35 NB	151B	Traffic returning to Interstate	Monitor location

LOCAL DETOUR 1/7	GLOBAL DETOUR 2/7	CRITICAL LOCATIONS 3/7	RESPONSE PLAN 4/7	AGENCY CONTACTS 5/7	DMS MESSAGES 6/7	TRAFFIC CONTROL 7/7
---------------------------------	----------------------------------	---------------------------------------	----------------------------------	------------------------------------	---------------------------------	------------------------------------

FREEWAY DIVERSION	POLK COUNTY IOWA	I-35 NORTHBOUND	FROM: Exit 90 (SE Oralabor Road) TO: Exit 92 (E 1st Street)	PLAN 6211 4/7
ALTERNATE ROUTE RESPONSE PLAN				

Minor Impact to Traffic (Less Than 30 Minutes)

Off Peak Period – Shoulder Blocked	Diversion not implemented: <ul style="list-style-type: none"> • On-scene traffic control • Deploy informational DMS messaging for approaching traffic
Off Peak Period – Shoulder and One Lane Blocked	

Intermediate Impact to Traffic (30 Minutes to 2 Hours)

Peak Period – Shoulder Blocked	Diversion not implemented: <ul style="list-style-type: none"> • On-scene traffic control • Deploy informational DMS messaging for approaching traffic
Off Period – Shoulder and One Lane Blocked	
Peak Period – Shoulder and One Lane Blocked	Partial Diversion: <ul style="list-style-type: none"> • On-scene traffic control • Deploy informational DMS messaging for approaching traffic • Deploy DMS messaging directly through traffic to use diversion routes • Monitor local diversion routes at critical locations as needed
All Lanes Blocked	Full Diversion: <ul style="list-style-type: none"> • On-scene traffic control • Deploy DMS messaging directing all traffic to use diversion routes • Deploy law enforcement to direct traffic at critical locations

Major Impact to Traffic (Greater Than 2 Hours)

Peak Period – Shoulder Blocked	Diversion not implemented: <ul style="list-style-type: none"> • On-scene traffic control • Deploy informational DMS messaging for approaching traffic
Off Period – Shoulder and One Lane Blocked	
Peak Period – Shoulder and One Lane Blocked	Partial/Discretionary Diversion: <ul style="list-style-type: none"> • Deploy cones, barricades, and other appropriate traffic control devices • Deploy informational DMS messaging for approaching traffic • Deploy DMS messaging directing through traffic to use diversion routes • Divert traffic to local diversion routes at discretion of incident commander
All Lanes Blocked	Full Diversion: <ul style="list-style-type: none"> • Deploy cones, barricades, and other appropriate traffic control devices • Deploy DMS messaging directing all traffic to use diversion routes • Deploy law enforcement to direct traffic at critical locations

LOCAL DETOUR 1/7	GLOBAL DETOUR 2/7	CRITICAL LOCATIONS 3/7	RESPONSE PLAN 4/7	AGENCY CONTACTS 5/7	DMS MESSAGES 6/7	TRAFFIC CONTROL 7/7
---------------------------------	----------------------------------	---------------------------------------	----------------------------------	------------------------------------	---------------------------------	------------------------------------

FREEWAY DIVERSION	POLK COUNTY IOWA	I-35 NORTHBOUND	FROM: Exit 90 (SE Oralabor Road) TO: Exit 92 (E 1st Street)	PLAN 6211 5A/7
CRITICAL CONTACTS				

Polk County Communications 515-286-3333	Iowa DOT Statewide TMC 515-237-3300	Iowa State Patrol Comm. Center 515-323-4360	Ankeny Traffic Engineer 515-494-7237	Union Pacific Railroad Company 888-877-7267
---	---	---	--	---

RESPONSIBILITIES

Polk County Communications	515-286-3333
<p>Coordinate with the incident commander as to whether a diversion route is needed and which one should be implemented.</p> <ul style="list-style-type: none"> Notify Iowa DOT statewide TMC of route implemented, incident specific or maintenance needs, and who the incident commander is. Dispatch County Sheriff, local law enforcement, and fire departments as needed. Inform local municipalities and other jurisdictions that a diversion route is being implemented. Deploy law enforcement to direct traffic at critical locations as needed. <p><u>Emergency Responders:</u></p> <ul style="list-style-type: none"> Secure scene. Provide incident information, diversion route recommendations, and towing needs to E911. Minimize impact to traffic. Provide manual traffic control as needed, or as directed by E911 at critical locations 	

Iowa DOT Statewide TMC	515-237-3300
<p>Deploy informational DMS and 511 messages to alert motorists of construction, delays, incidents, closures, etc. and/or directional DMS messaging to direct traffic to the implemented diversion route.</p> <ul style="list-style-type: none"> Monitor incidents and critical locations along the implemented diversion route. Coordinate with Iowa DOT maintenance facilities regarding traffic control needs. Deploy PDMS and Portable CCTV devices as needed for longer duration incidents. Coordinate with local municipalities regarding the modification of signals, signal timing, or stop signs. Coordinate with railroad authority regarding key crossings along the implemented diversion route. 	

Iowa State Patrol Comm. Center	515-323-4360
Dispatch State Patrol.	
<p><u>On-Scene Incident Commander:</u></p> <ul style="list-style-type: none"> Secure scene. Notify appropriate communications center of incident location, anticipated duration, affected lanes, and identify the incident commander. Coordinate with the communications center regarding diversion route needs. Minimize impact to traffic through coordination of on-scene traffic control. Ensure overweight and oversize vehicles are parked. When the incident is safely cleared, notify the appropriate communications center that the diversion route is no longer needed. 	

LOCAL DETOUR 1/7	GLOBAL DETOUR 2/7	CRITICAL LOCATIONS 3/7	RESPONSE PLAN 4/7	AGENCY CONTACTS 5/7	DMS MESSAGES 6/7	TRAFFIC CONTROL 7/7
--------------------------------	---------------------------------	--------------------------------------	---------------------------------	-----------------------------------	--------------------------------	-----------------------------------

Iowa DOT TMC: 515-237-3300

ENSURE ALL OVERWEIGHT AND OVERSIZE VEHICLES ARE PARKED SAFELY

FREEWAY DIVERSION	POLK COUNTY IOWA	I-35 NORTHBOUND	FROM: Exit 90 (SE Oralabor Road) TO: Exit 92 (E 1st Street)	PLAN 6211 5B/7
ADDITIONAL CONTACT INFORMATION				

Polk County Communications	
Des Moines Dispatch	515-283-4811

Iowa DOT Statewide TMC	
Iowa DOT Statewide TMC (Toll Free)	888-449-9672
Iowa DOT Maint. Garage – Des Moines	515-265-1614
Union Pacific RR Co.	888-877-7267

Iowa State Patrol Comm. Center	
Iowa State Patrol – District 1	515-725-0010
Iowa State Patrol – District 15	515-281-6176
Iowa State Patrol – District 16	515-281-3879
Iowa State Patrol – Central HQ	515-725-6090

Ankeny Traffic Engineer(Leslie Hart)	
Ankeny Traffic Engineer	515-494-7237

LOCAL DETOUR 1/7	GLOBAL DETOUR 2/7	CRITICAL LOCATIONS 3/7	RESPONSE PLAN 4/7	AGENCY CONTACTS 5/7	DMS MESSAGES 6/7	TRAFFIC CONTROL 7/7
---------------------------------	----------------------------------	---------------------------------------	----------------------------------	------------------------------------	---------------------------------	------------------------------------

Iowa DOT TMC: 515-237-3300

ENSURE ALL OVERWEIGHT AND OVERSIZE VEHICLES ARE PARKED SAFELY

FREEWAY DIVERSION	POLK COUNTY IOWA	I-35 NORTHBOUND	FROM: Exit 90 (SE Oralabor Road) TO: Exit 92 (E 1st Street)	PLAN 6211 6/7
DMS MESSAGES				

LOCAL PRIMARY	Sign Location	Page 1	Page 2
	I-80 WB @ 4 Mile - (OH)	I-35 N CLOSED AT EXIT 90 USE ALT ROUTE	I-35 N CLOSED AT EXIT 90 EXPECT DELAYS
	I-235 EB @ Euclid - (OH)	ROAD CLOSED AT EXIT 90 DETOUR ORALABOR E	ROAD CLOSED AT EXIT 90 PREPARE TO STOP
	I-80 WB @ Altoona - (OH)	I-35 N CLOSED AT EXIT 90 USE ALT ROUTE	I-35 N CLOSED AT EXIT 90 EXPECT DELAYS
	I-80 EB@ E of E 14th - (SM)	I-35 N CLOSED EXIT 90	USE ALT ROUTE
	I-80 EB @ Morningstar - (SM)	I-35 N CLOSED EXIT 90	USE ALT ROUTE
	I-80 EB @ Jordan Creek - (OH)	I-35 N CLOSED AT EXIT 90 USE ALT ROUTE	USE ALT ROUTE
	I-35 NB @ Cumming - (OH)	ROAD CLOSED AT EXIT 90 DETOUR ORALABOR E	ROAD CLOSED AT EXIT 90 PREPARE TO STOP
	I-35 NB @ Mills Civic - (OH)	ROAD CLOSED AT EXIT 90 DETOUR ORALABOR E	ROAD CLOSED AT EXIT 90 PREPARE TO STOP

LOCAL SECONDARY	Sign Location	Page 1	Page 2
	NO DMS AVAILABLE		

GLOBAL	Sign Location	Page 1	Page 2
	NO DMS AVAILABLE		

LOCAL DETOUR 1/7	GLOBAL DETOUR 2/7	CRITICAL LOCATIONS 3/7	RESPONSE PLAN 4/7	AGENCY CONTACTS 5/7	DMS MESSAGES 6/7	TRAFFIC CONTROL 7/7
---------------------------------	----------------------------------	---------------------------------------	----------------------------------	------------------------------------	---------------------------------	------------------------------------

FREEWAY DIVERSION	POLK COUNTY IOWA	I-35 NORTHBOUND	FROM: Exit 90 (SE Oralabor Road) TO: Exit 92 (E 1st Street)	PLAN 6211 7/7
TRAFFIC CONTROL				

LOCATION	INITIAL ACTION/RESOURCE	EXTENDED ACTION/RESOURCE
-----------------	--------------------------------	---------------------------------

Local Diversion - Primary

NB I-35 Off Ramp to SE Oralabor Rd./NE 78 th Ave EB (1 Signal)	Detour Signing	Adjust Signal Timing Manual Traffic Control (as needed/peak periods)
NE 78 th Ave at Union Pacific Railroad Crossing	Detour Signing	Coordinate with UP Railroad and local law enforcement as necessary
NE 78 th Ave EB to NE 56 th St NB	Detour Signing	Install Temporary Diversion Trailblazing Signage as Needed
NE 56 th St NB to NE 94 th Ave WB	Detour Signing	Manual traffic control (as needed/peak periods)
NE 94 th Ave at Union Pacific Railroad Crossing	Detour Signing	Coordinate with UP Railroad and local law enforcement as necessary
E. 1 st St./NE 94 th Ave WB to I-35 NB On Ramp	Detour Signing	Manual traffic control (as needed/peak periods)

Local Diversion - Secondary

NB I-35 Off Ramp to SE Oralabor Rd WB (1 Signal)	Detour Signing	Adjust Signal Timing Manual Traffic Control (as needed/peak periods)
SE Oralabor Rd Between I-35 and US 69/South Ankeny Blvd. (6 Signals)	Detour Signing	Adjust Signal Timing Manual Traffic Control (as needed/peak periods)
SE Oralabor Rd WB to US 69/South Ankeny Blvd. NB	Detour Signing	Manual traffic control (as needed/peak periods)
US 69/South Ankeny Blvd. NB Between Oralabor Rd and E. 1st St. (7 Signals)	Detour Signing	Adjust Signal Timing Manual Traffic Control (as needed/peak periods)
US69/South Ankeny Blvd. NB to E. 1st St. WB	Detour Signing	Manual traffic control (as needed/peak periods)
E. 1st St. WB to I-35 NB (5 Signals)	Detour Signing	Adjust Signal Timing Manual Traffic Control (as needed/peak periods)

LOCAL DETOUR 1/7	GLOBAL DETOUR 2/7	CRITICAL LOCATIONS 3/7	RESPONSE PLAN 4/7	AGENCY CONTACTS 5/7	DMS MESSAGES 6/7	TRAFFIC CONTROL 7/7
---------------------------------	----------------------------------	---------------------------------------	----------------------------------	------------------------------------	---------------------------------	------------------------------------

FREEWAY DIVERSION	POLK COUNTY IOWA	I-35 NORTHBOUND	FROM: Exit 90 (SE Oralabor Road) TO: Exit 92 (E 1st Street)	PLAN 6211 7/7
TRAFFIC CONTROL				

Global Diversion

I-35 NB Off Ramp to I-80 EB	Detour Signing	Monitor location
I-80 EB to US 65 NB Off Ramp (1 Signal)	Detour Signing	Adjust Signal Timing Manual Traffic Control (as needed/peak periods)
US 65 NB Between I-80 and US 65/IA330 Interchange (2 Signals)	Detour Signing	Adjust Signal Timing Manual Traffic Control (as needed/peak periods)
US 65 NB to US 65 NB Off Ramp at US 65/IA 330 Interchange continuing on US 65 NB	Detour Signing	Monitor location
US 65 NB to US 30 WB	Detour Signing	Monitor location
US 30 EB to I-35 NB	Detour Signing	Monitor location

LOCAL DETOUR 1/7	GLOBAL DETOUR 2/7	CRITICAL LOCATIONS 3/7	RESPONSE PLAN 4/7	AGENCY CONTACTS 5/7	DMS MESSAGES 6/7	TRAFFIC CONTROL 7/7
---------------------------------	----------------------------------	---------------------------------------	----------------------------------	------------------------------------	---------------------------------	------------------------------------