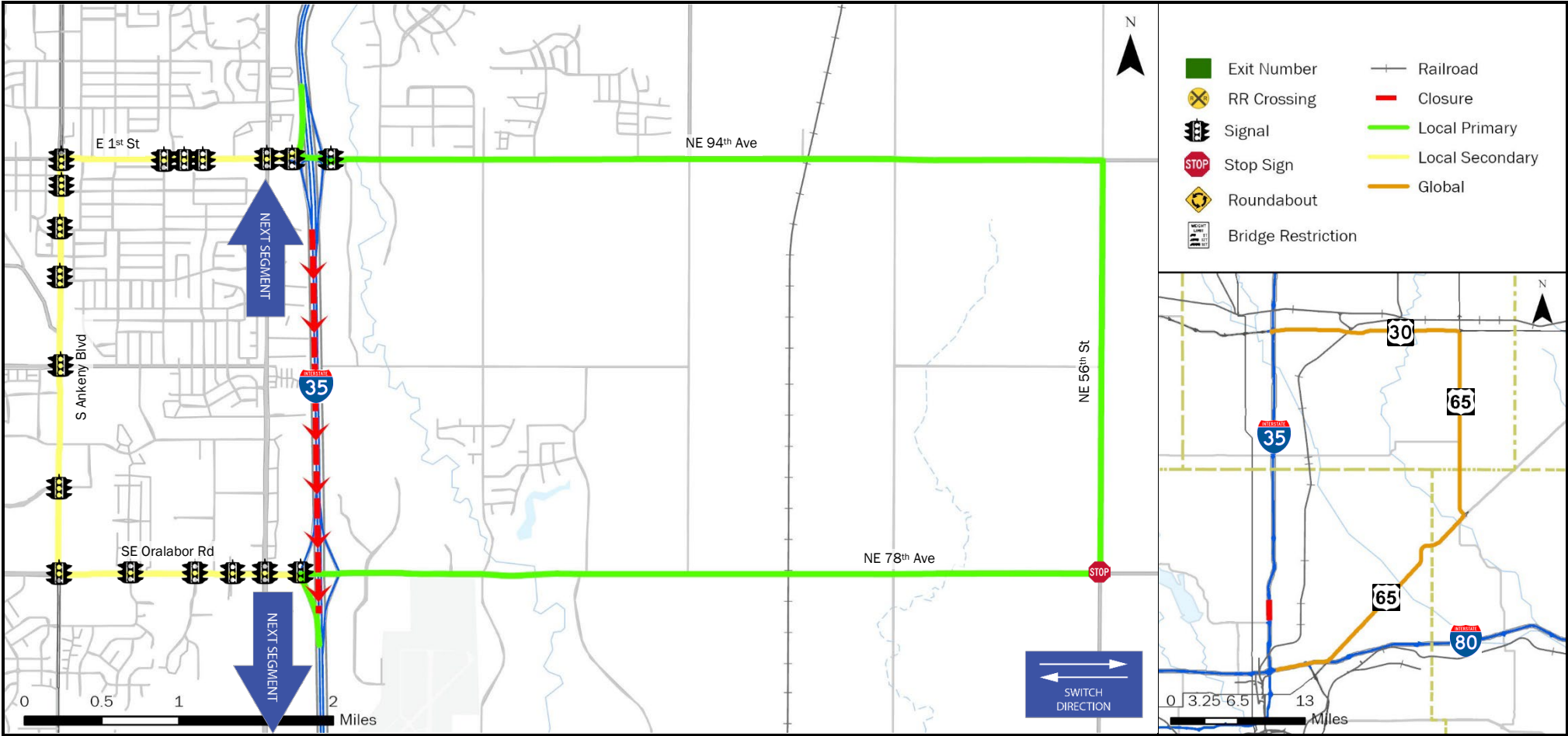


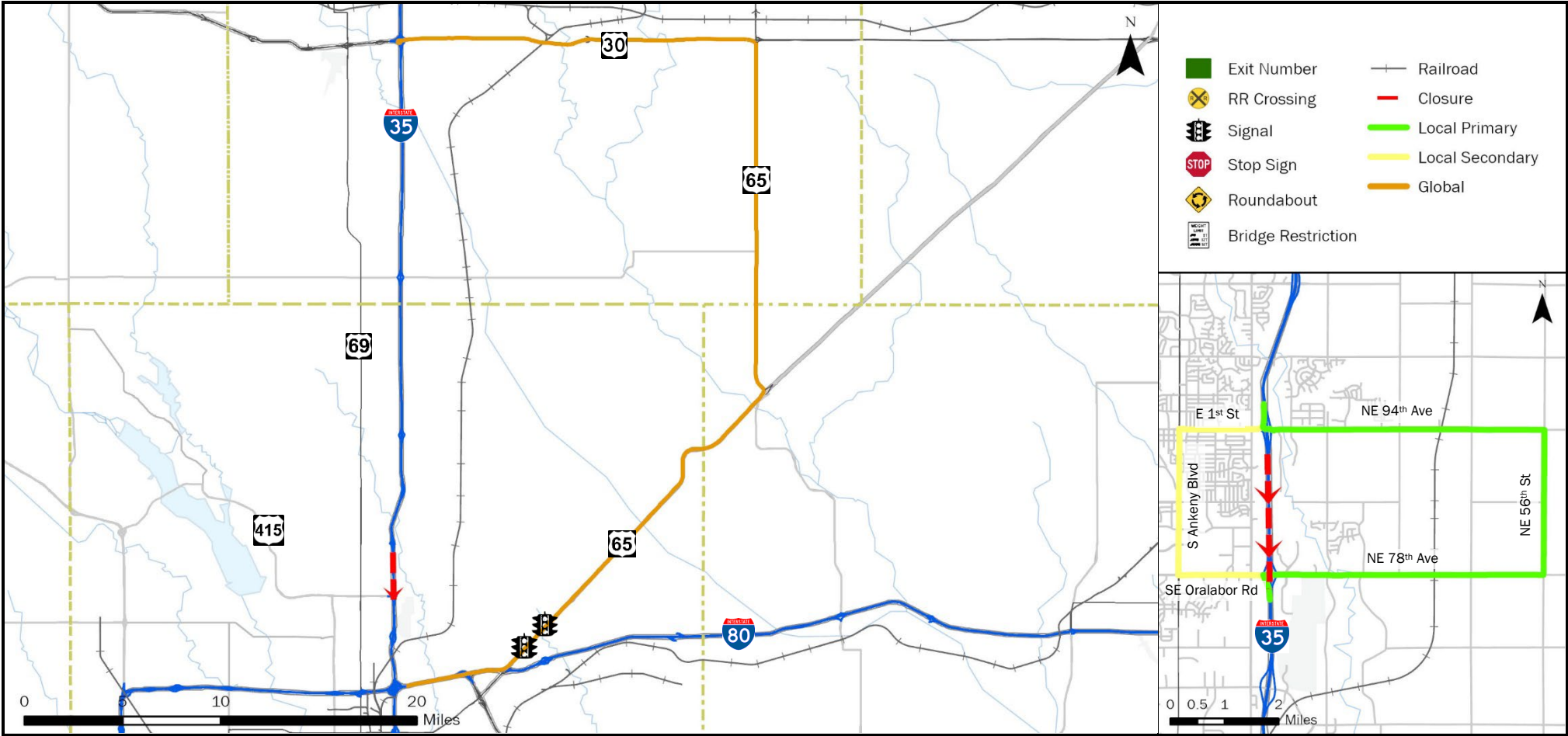
<b>FREEWAY DIVERSION</b>	<b>POLK COUNTY IOWA</b>	<b>I-35 SOUTHBOUND</b>	<b>FROM:</b> Exit 92 (E 1st Street)	<b>TO:</b> Exit 90 (SE Oralabor Road)	<b>PLAN 6212 1/7</b>
------------------------------	-----------------------------	----------------------------	--	--	--------------------------



<b>CRITICAL LOCATIONS TO MONITOR FOR LOCAL PRIMARY</b>	<b>AGENCIES TO NOTIFY</b>	Iowa DOT TMC: 515-237-3300
SB I-35 Off Ramp to E 1 <sup>st</sup> St. EB (2 Signals) NE 94 <sup>th</sup> Ave. at Union Pacific Railroad Crossing NE 94 <sup>th</sup> Ave EB to NE 56 <sup>th</sup> St. SB NE 56 <sup>th</sup> St. SB to NE 78 <sup>th</sup> Ave WB NE 78 <sup>th</sup> Ave at Union Pacific Railroad Crossing SE Oralabor Road WB to I-35 SB (2 Signals)	Polk County Communications 515-286-3333 Iowa DOT Statewide TMC 515-237-3300 Iowa State Patrol Comm. Center 800-525-5555 Ankeny Traffic Engineer 515-494-7237 Union Pacific Railroad Company (UP) 888-877-7267	

<b>LOCAL DETOUR 1/7</b>	<b>GLOBAL DETOUR 2/7</b>	<b>CRITICAL LOCATIONS 3/7</b>	<b>RESPONSE PLAN 4/7</b>	<b>AGENCY CONTACTS 5/7</b>	<b>DMS MESSAGES 6/7</b>	<b>TRAFFIC CONTROL 7/7</b>
---------------------------------	----------------------------------	---------------------------------------	----------------------------------	------------------------------------	---------------------------------	------------------------------------

<b>FREEWAY DIVERSION</b>	<b>POLK COUNTY IOWA</b>	<b>I-35 SOUTHBOUND</b>	<b>FROM:</b> Exit 92 (E 1st Street)	<b>TO:</b> Exit 90 (SE Oralabor Road)	<b>PLAN 6212</b> <b>2/7</b>
------------------------------	-----------------------------	----------------------------	--	--	--------------------------------



<b>CRITICAL LOCATIONS TO MONITOR FOR GLOBAL</b>	<b>AGENCIES TO NOTIFY</b>	<b>Iowa DOT TMC: 515-237-3300</b>
I-35 SB Off Ramp to US 30 EB US 30 EB to US 65 SB US 65 SB to US 65 SB On Ramp at US 65/IA 330 Interchange US 65 Between US 65/IA 330 Interchange and I-80 (1 Signal) US 65 SB to I-80 WB I-80 WB to I-35 SB	Polk County Communications Iowa DOT Statewide TMC Iowa State Patrol Comm. Center Ankeny Traffic Engineer Union Pacific Railroad Company (UP)	515-286-3333 515-237-3300 800-525-5555 515-494-7237 888-877-7267

<b>LOCAL DETOUR 1/7</b>	<b>GLOBAL DETOUR 2/7</b>	<b>CRITICAL LOCATIONS 3/7</b>	<b>RESPONSE PLAN 4/7</b>	<b>AGENCY CONTACTS 5/7</b>	<b>DMS MESSAGES 6/7</b>	<b>TRAFFIC CONTROL 7/7</b>
---------------------------------	----------------------------------	---------------------------------------	----------------------------------	------------------------------------	---------------------------------	------------------------------------

<b>FREEWAY DIVERSION</b>	<b>POLK COUNTY IOWA</b>	<b>I-35 SOUTHBOUND</b>	<b>FROM:</b> Exit 92 (E 1st Street) <b>TO:</b> Exit 90 (SE Oralabor Road)	<b>PLAN 6212 3/7</b>
<b>CRITICAL AREAS TO MONITOR</b>				

<b>LOCATION</b>	<b>EXIT</b>	<b>SITUATION</b>	<b>RESPONSE</b>
-----------------	-------------	------------------	-----------------

### Local Diversion - Primary

SB I-35 Off Ramp to E. 1st St. EB (2 Signals)	92	Traffic backing up on and off ramps due to signalized intersections at diverging diamond interchange	Provide appropriate message on upstream DMS. Confirm City of Ankeny has been notified. Contact local law enforcement to Close E. 1st St. EB at SE Delaware Ave. diverting traffic onto SE Delaware Ave. Close I-35 SB on ramp from WB direction and Close E. 1st St. crossover allowing only free right turn to I-35 NB on ramp.
NE 94th Ave at Union Pacific Railroad Crossing		Train blocking the crossing (Gates/Flashers)	Contact Union Pacific Railroad and Notify local law enforcement.
NE 94th Ave EB to NE 56th St. SB		Traffic backing up and significant delays due to right turn	Notify local law enforcement
NE 56th St. SB to NE 78th Ave WB		Traffic backing up and significant delays due to right turn	Notify local law enforcement
NE 78th Ave at Union Pacific Railroad Crossing		Train blocking the crossing (Gates/Flashers)	Contact Union Pacific Railroad and Notify local law enforcement.
SE Oralabor Rd. WB to I-35 SB (2 Signals)	90	Traffic backing up due to signalized intersections	Confirm City of Ankeny has been notified.

### Local Diversion - Secondary

SB I-35 Off Ramp to E. 1st St. WB (1 Signal)	92	Traffic backing up on ramp due to signalized intersections	Provide appropriate message on upstream DMS. Confirm City of Ankeny has been notified.
E. 1st St. Between I-35 & US69/South Ankeny Blvd. (5 Signals)		Traffic backing up due to 7 signalized intersections	Confirm City of Ankeny has been notified.
E. 1st St. WB to US69/South Ankeny Blvd. SB		Traffic backing up and significant delays due to left turn	Notify local law enforcement
US 69/South Ankeny Blvd. Between E. 1st St. & Oralabor Rd. (7 Signals)		Traffic backing up due to 7 signalized intersections	Confirm City of Ankeny has been notified.
US 69/South Ankeny Blvd. SB to Oralabor Rd. EB		Traffic backing up and significant delays due to left turn	Notify local law enforcement
Oralabor Rd. WB to I-35 SB (5 Signals)	90	Traffic backing up due to 5 signalized intersections	Notify local law enforcement. Confirm City of Ankeny has been notified.

<b>LOCAL DETOUR 1/7</b>	<b>GLOBAL DETOUR 2/7</b>	<b>CRITICAL LOCATIONS 3/7</b>	<b>RESPONSE PLAN 4/7</b>	<b>AGENCY CONTACTS 5/7</b>	<b>DMS MESSAGES 6/7</b>	<b>TRAFFIC CONTROL 7/7</b>
---------------------------------	----------------------------------	---------------------------------------	----------------------------------	------------------------------------	---------------------------------	------------------------------------

<b>FREEWAY DIVERSION</b>	<b>POLK COUNTY IOWA</b>	<b>I-35 SOUTHBOUND</b>	<b>FROM:</b> Exit 92 (E 1st Street) <b>TO:</b> Exit 90 (SE Oralabor Road)	<b>PLAN 6212 3/7</b>
<b>CRITICAL AREAS TO MONITOR</b>				

**Global Diversion**

I-35 SB Off Ramp to US 30 EB	111A	Traffic backing up due to merge at loop ramp	Provide appropriate message on upstream DMS
US 30 EB to US 65 SB		Traffic backing up and significant delays due to right turn	Notify local law enforcement
US 65 SB to US 65 SB On Ramp at US 65/IA 330 Interchange		Traffic backing up and significant delays due to right turn	Monitor location
US 65 Between US 65/IA 330 Interchange and I-80 (1 Signal)		Traffic backing up due to signalized intersection	Monitor location. Confirm City of Altoona has been notified.
US 65 SB to I-80 WB		Traffic backing up and significant delays due to right turn	Monitor location
I-80 WB to I-35 SB	137A	East Mixmaster Interchange	Monitor location

<b>FREEWAY DIVERSION</b>	<b>POLK COUNTY IOWA</b>	<b>I-35 SOUTHBOUND</b>	<b>FROM:</b> Exit 92 (E 1st Street) <b>TO:</b> Exit 90 (SE Oralabor Road)	<b>PLAN 6212 4/7</b>
<b>ALTERNATE ROUTE RESPONSE PLAN</b>				

### Minor Impact to Traffic (Less Than 30 Minutes)

Off Peak Period – Shoulder Blocked	Diversion not implemented: <ul style="list-style-type: none"> <li>• On-scene traffic control</li> <li>• Deploy informational DMS messaging for approaching traffic</li> </ul>
Off Peak Period – Shoulder and One Lane Blocked	

### Intermediate Impact to Traffic (30 Minutes to 2 Hours)

Peak Period – Shoulder Blocked	Diversion not implemented: <ul style="list-style-type: none"> <li>• On-scene traffic control</li> <li>• Deploy informational DMS messaging for approaching traffic</li> </ul>
Off Period – Shoulder and One Lane Blocked	
Peak Period – Shoulder and One Lane Blocked	<b>Partial Diversion:</b> <ul style="list-style-type: none"> <li>• On-scene traffic control</li> <li>• Deploy informational DMS messaging for approaching traffic</li> <li>• Deploy DMS messaging directly through traffic to use diversion routes</li> <li>• Monitor local diversion routes at critical locations as needed</li> </ul>
All Lanes Blocked	<b>Full Diversion:</b> <ul style="list-style-type: none"> <li>• On-scene traffic control</li> <li>• Deploy DMS messaging directing all traffic to use diversion routes</li> <li>• Deploy law enforcement to direct traffic at critical locations</li> </ul>

### Major Impact to Traffic (Greater Than 2 Hours)

Peak Period – Shoulder Blocked	Diversion not implemented: <ul style="list-style-type: none"> <li>• On-scene traffic control</li> <li>• Deploy informational DMS messaging for approaching traffic</li> </ul>
Off Period – Shoulder and One Lane Blocked	
Peak Period – Shoulder and One Lane Blocked	<b>Partial/Discretionary Diversion:</b> <ul style="list-style-type: none"> <li>• Deploy cones, barricades, and other appropriate traffic control devices</li> <li>• Deploy informational DMS messaging for approaching traffic</li> <li>• Deploy DMS messaging directing through traffic to use diversion routes</li> <li>• Divert traffic to local diversion routes at discretion of incident commander</li> </ul>
All Lanes Blocked	<b>Full Diversion:</b> <ul style="list-style-type: none"> <li>• Deploy cones, barricades, and other appropriate traffic control devices</li> <li>• Deploy DMS messaging directing all traffic to use diversion routes</li> <li>• Deploy law enforcement to direct traffic at critical locations</li> </ul>

<b>LOCAL DETOUR 1/7</b>	<b>GLOBAL DETOUR 2/7</b>	<b>CRITICAL LOCATIONS 3/7</b>	<b>RESPONSE PLAN 4/7</b>	<b>AGENCY CONTACTS 5/7</b>	<b>DMS MESSAGES 6/7</b>	<b>TRAFFIC CONTROL 7/7</b>
---------------------------------	----------------------------------	---------------------------------------	----------------------------------	------------------------------------	---------------------------------	------------------------------------



<b>FREEWAY DIVERSION</b>	<b>POLK COUNTY IOWA</b>	<b>I-35 SOUTHBOUND</b>	<b>FROM:</b> Exit 92 (E 1st Street) <b>TO:</b> Exit 90 (SE Oralabor Road)	<b>PLAN 6212 5A/7</b>
<b>CRITICAL CONTACTS</b>				

<b>Polk County Communications</b> 515-286-3333	<b>Iowa DOT Statewide TMC</b> 515-237-3300	<b>Iowa State Patrol Comm. Center</b> 800-525-5555	<b>Ankeny Traffic Engineer</b> 515-494-7237	<b>Union Pacific Railroad Company</b> 888-877-7267
---	---	---	--	---

## RESPONSIBILITIES

<b>Polk County Communications</b>	<b>515-286-3333</b>
<p>Coordinate with the incident commander as to whether a diversion route is needed and which one should be implemented.</p> <ul style="list-style-type: none"> <li>Notify Iowa DOT statewide TMC of route implemented, incident specific or maintenance needs, and who the incident commander is.</li> <li>Dispatch County Sheriff, local law enforcement, and fire departments as needed.</li> <li>Inform local municipalities and other jurisdictions that a diversion route is being implemented.</li> <li>Deploy law enforcement to direct traffic at critical locations as needed.</li> </ul> <p><u>Emergency Responders:</u></p> <ul style="list-style-type: none"> <li>Secure scene.</li> <li>Provide incident information, diversion route recommendations, and towing needs to E911.</li> <li>Minimize impact to traffic.</li> <li>Provide manual traffic control as needed, or as directed by E911 at critical locations</li> </ul>	

<b>Iowa DOT Statewide TMC</b>	<b>515-237-3300</b>
<p>Deploy informational DMS and 511 messages to alert motorists of construction, delays, incidents, closures, etc. and/or directional DMS messaging to direct traffic to the implemented diversion route.</p> <ul style="list-style-type: none"> <li>Monitor incidents and critical locations along the implemented diversion route.</li> <li>Coordinate with Iowa DOT maintenance facilities regarding traffic control needs.</li> <li>Deploy PDMS and Portable CCTV devices as needed for longer duration incidents.</li> <li>Coordinate with local municipalities regarding the modification of signals, signal timing, or stop signs.</li> <li>Coordinate with railroad authority regarding key crossings along the implemented diversion route.</li> </ul>	

<b>Iowa State Patrol Comm. Center</b>	<b>800-525-5555</b>
Dispatch State Patrol.	
<p><u>On-Scene Incident Commander:</u></p> <ul style="list-style-type: none"> <li>Secure scene.</li> <li>Notify appropriate communications center of incident location, anticipated duration, affected lanes, and identify the incident commander.</li> <li>Coordinate with the communications center regarding diversion route needs.</li> <li>Minimize impact to traffic through coordination of on-scene traffic control.</li> <li>Ensure overweight and oversize vehicles are parked.</li> <li>When the incident is safely cleared, notify the appropriate communications center that the diversion route is no longer needed.</li> </ul>	

<b>LOCAL DETOUR</b> 1/7	<b>GLOBAL DETOUR</b> 2/7	<b>CRITICAL LOCATIONS</b> 3/7	<b>RESPONSE PLAN</b> 4/7	<b>AGENCY CONTACTS</b> 5/7	<b>DMS MESSAGES</b> 6/7	<b>TRAFFIC CONTROL</b> 7/7
--------------------------------	---------------------------------	--------------------------------------	---------------------------------	-----------------------------------	--------------------------------	-----------------------------------

Iowa DOT TMC: 515-237-3300

ENSURE ALL OVERWEIGHT AND OVERSIZE VEHICLES ARE PARKED SAFELY

<b>FREEWAY DIVERSION</b>	<b>POLK COUNTY IOWA</b>	<b>I-35 SOUTHBOUND</b>	<b>FROM:</b> Exit 92 (E 1st Street) <b>TO:</b> Exit 90 (SE Oralabor Road)	<b>PLAN 6212 5B/7</b>
<b>ADDITIONAL CONTACT INFORMATION</b>				

<b>Polk County Communications</b>	
Des Moines Dispatch	515-283-4811

<b>Iowa DOT Statewide TMC</b>	
Iowa DOT Statewide TMC (Toll Free)	888-449-9672
Iowa DOT Maint. Garage – Des Moines	515-265-1614
Union Pacific RR Co.	888-877-7267

<b>Iowa State Patrol Comm. Center</b>	
Iowa State Patrol – District 1	515-725-0010
Iowa State Patrol – District 15	515-281-6176
Iowa State Patrol – District 16	515-281-3879
Iowa State Patrol – Central HQ	515-725-6090

<b>Ankeny Traffic Engineer</b>	
Ankeny Traffic Engineer	515-494-7237

<b>LOCAL DETOUR 1/7</b>	<b>GLOBAL DETOUR 2/7</b>	<b>CRITICAL LOCATIONS 3/7</b>	<b>RESPONSE PLAN 4/7</b>	<b>AGENCY CONTACTS 5/7</b>	<b>DMS MESSAGES 6/7</b>	<b>TRAFFIC CONTROL 7/7</b>
Iowa DOT TMC: 515-237-3300			ENSURE ALL OVERWEIGHT AND OVERSIZE VEHICLES ARE PARKED SAFELY			

<b>FREEWAY DIVERSION</b>	<b>POLK COUNTY IOWA</b>	<b>I-35 SOUTHBOUND</b>	<b>FROM:</b> Exit 92 (E 1st Street) <b>TO:</b> Exit 90 (SE Oralabor Road)	<b>PLAN 6212 6/7</b>
<b>DMS MESSAGES</b>				

<b>LOCAL PRIMARY</b>	<b>Sign Location</b>	<b>Page 1</b>	<b>Page 2</b>
	I-35 SB @ Elkhart - (SM)	I-35N AT EXIT 92 CLOSED	DETOUR EXIT 92
	I-35 SB @ IA 210 - (OH)	ROAD CLOSED AT EXIT 92 DETOUR TO NE94TH E	ROAD CLOSED AT EXIT 92 PREPARE TO STOP
	US 30 EB @ MM 150.15 - (SM)	I-35S AT EXIT 92 CLOSED	USE ALT ROUTE

<b>LOCAL SECONDARY</b>	<b>Sign Location</b>	<b>Page 1</b>	<b>Page 2</b>
	<b>NO DMS AVAILABLE</b>		

<b>GLOBAL</b>	<b>Sign Location</b>	<b>Page 1</b>	<b>Page 2</b>
	<b>NO DMS AVAILABLE</b>		

<b>LOCAL DETOUR 1/7</b>	<b>GLOBAL DETOUR 2/7</b>	<b>CRITICAL LOCATIONS 3/7</b>	<b>RESPONSE PLAN 4/7</b>	<b>AGENCY CONTACTS 5/7</b>	<b>DMS MESSAGES 6/7</b>	<b>TRAFFIC CONTROL 7/7</b>
---------------------------------	----------------------------------	---------------------------------------	----------------------------------	------------------------------------	---------------------------------	------------------------------------



<b>FREEWAY DIVERSION</b>	<b>POLK COUNTY IOWA</b>	<b>I-35 SOUTHBOUND</b>	<b>FROM:</b> Exit 92 (E 1st Street) <b>TO:</b> Exit 90 (SE Oralabor Road)	<b>PLAN 6212 7/7</b>
<b>TRAFFIC CONTROL</b>				

<b>LOCATION</b>	<b>INITIAL ACTION/RESOURCE</b>	<b>EXTENDED ACTION/RESOURCE</b>
-----------------	--------------------------------	---------------------------------

### Local Diversion - Primary

SB I-35 Off Ramp to E. 1st St. EB (2 Signals)	Detour Signing	Adjust Signal Timing Manual Traffic Control (as needed/peak periods)
NE 94th Ave at Union Pacific Railroad Crossing	Detour Signing	Coordinate with UP Railroad and local law enforcement as necessary
NE 94th Ave EB to NE 56th St. SB	Detour Signing	Manual traffic control (as needed/peak periods)
NE 56th St. SB to NE 78th Ave WB	Detour Signing	Manual traffic control (as needed/peak periods)
NE 78th Ave at Union Pacific Railroad Crossing	Detour Signing	Coordinate with UP Railroad and local law enforcement as necessary
SE Oralabor Rd. WB to I-35 SB (2 Signals)	Detour Signing	Adjust Signal Timing Manual Traffic Control (as needed/peak periods)

### Local Diversion - Secondary

SB I-35 Off Ramp to E. 1st St. WB (1 Signal)	Detour Signing	Adjust Signal Timing Manual Traffic Control (as needed/peak periods)
E. 1st St. Between I-35 & US69/ South Ankeny Blvd. (5 Signals)	Detour Signing	Adjust Signal Timing Manual Traffic Control (as needed/peak periods)
E. 1st St. WB to US69/ South Ankeny Blvd. SB	Detour Signing	Manual traffic control (as needed/peak periods)
US 69/South Ankeny Blvd. Between E. 1st St. & Oralabor Rd. (7 Signals)	Detour Signing	Adjust Signal Timing Manual Traffic Control (as needed/peak periods)
US 69/South Ankeny Blvd. SB to Oralabor Rd. EB	Detour Signing	Manual traffic control (as needed/peak periods)

<b>LOCAL DETOUR 1/7</b>	<b>GLOBAL DETOUR 2/7</b>	<b>CRITICAL LOCATIONS 3/7</b>	<b>RESPONSE PLAN 4/7</b>	<b>AGENCY CONTACTS 5/7</b>	<b>DMS MESSAGES 6/7</b>	<b>TRAFFIC CONTROL 7/7</b>
---------------------------------	----------------------------------	---------------------------------------	----------------------------------	------------------------------------	---------------------------------	------------------------------------

<b>FREEWAY DIVERSION</b>	<b>POLK COUNTY IOWA</b>	<b>I-35 SOUTHBOUND</b>	<b>FROM:</b> Exit 92 (E 1st Street) <b>TO:</b> Exit 90 (SE Oralabor Road)	<b>PLAN 6212 7/7</b>
<b>TRAFFIC CONTROL</b>				

**Global Diversion**

I-35 SB Off Ramp to US 30 EB	Detour Signing	Monitor location
US 30 EB to US 65 SB	Detour Signing	Monitor location
US 65 SB to US 65 SB On Ramp at US 65/IA 330 Interchange	Detour Signing	Monitor location
US 65 Between US 65/IA 330 Interchange and I-80 (1 Signal)	Detour Signing	Adjust Signal Timing Manual Traffic Control (as needed/peak periods)
US 65 SB to I-80 WB	Detour Signing	Monitor location
I-80 WB to I-35 SB	Detour Signing	Monitor location

<b>LOCAL DETOUR 1/7</b>	<b>GLOBAL DETOUR 2/7</b>	<b>CRITICAL LOCATIONS 3/7</b>	<b>RESPONSE PLAN 4/7</b>	<b>AGENCY CONTACTS 5/7</b>	<b>DMS MESSAGES 6/7</b>	<b>TRAFFIC CONTROL 7/7</b>
---------------------------------	----------------------------------	---------------------------------------	----------------------------------	------------------------------------	---------------------------------	------------------------------------