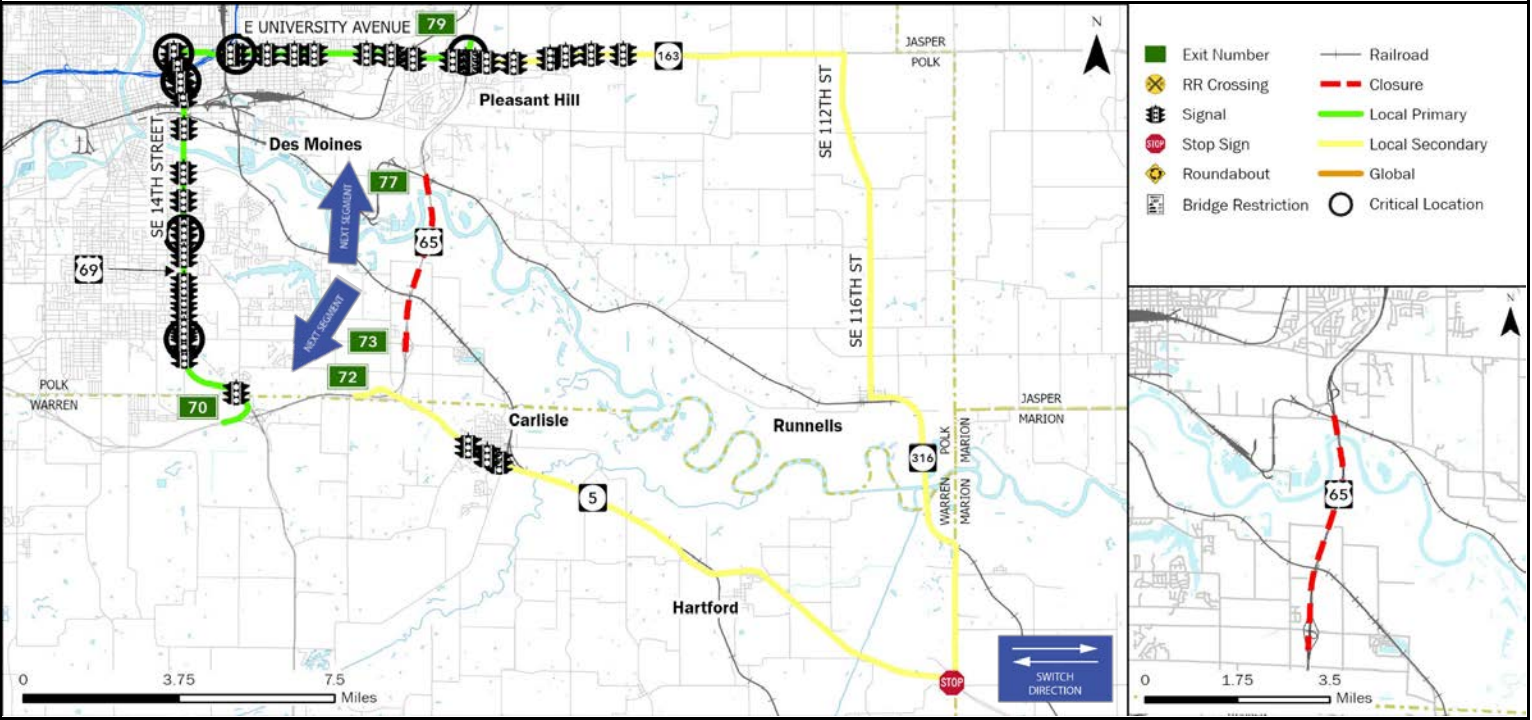


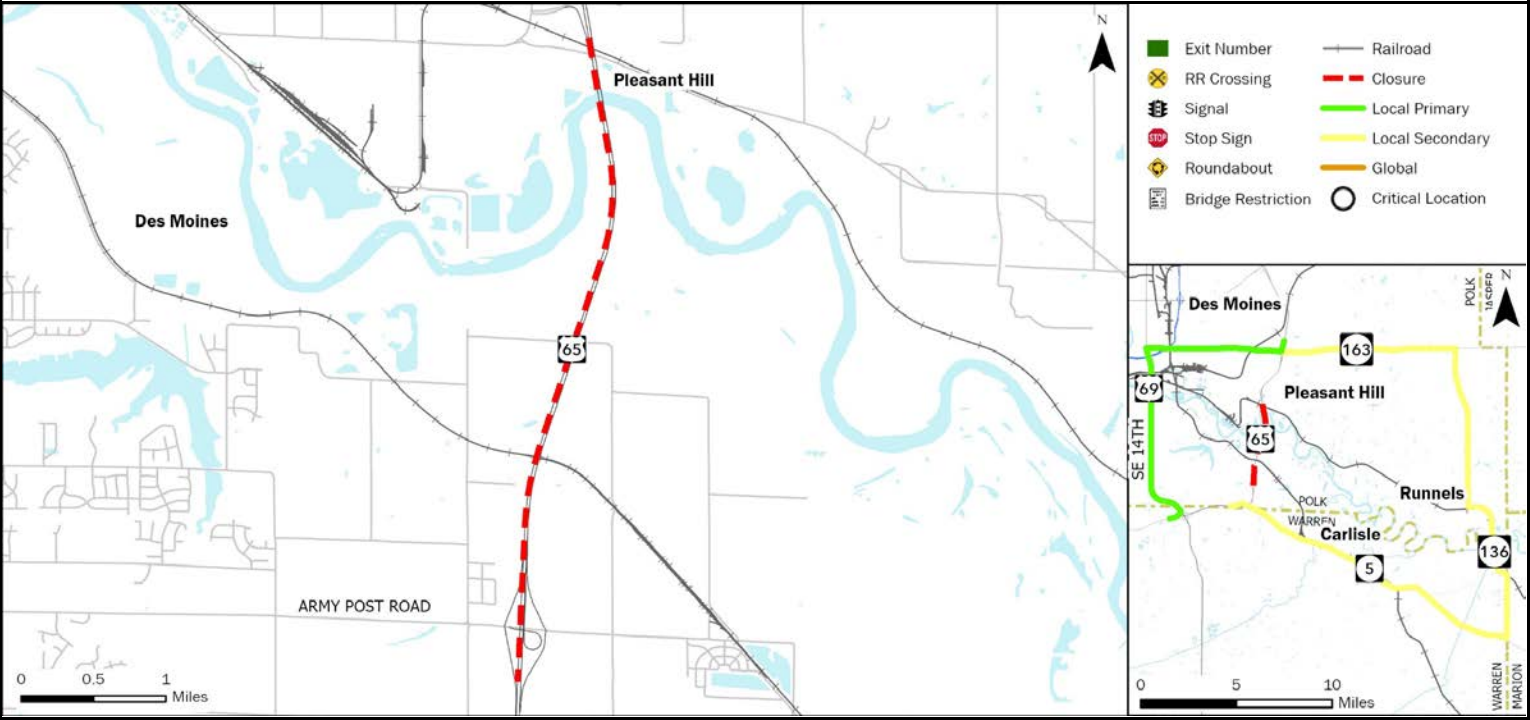
FREEWAY DIVERSION	POLK COUNTY IOWA	IA 5 WESTBOUND US 65 SOUTHBOUND	FROM: Exit 77 (Vandalia Rd)	TO: Exit 73 (SE Army Post Rd)	PLAN 6618 1/7
--------------------------	-------------------------	--	---------------------------------------	---	--------------------------------



CRITICAL LOCATIONS TO MONITOR FOR LOCAL PRIMARY	AGENCIES TO NOTIFY Iowa DOT TMC: 515-237-3300
US 65 Off Ramp (Exit 79) IA 163/E University Ave & Hubbell Ave IA 163/E University Ave & US 69/E 14th St. US 69/SE 14th St. & E Grand Ave US 69/SE 14th St. & Indianola Ave US 69/SE 14th St. & E Army Post Rd	Jasper County Emergency Communications Center (SECC) 641-792-5912 Iowa DOT Statewide TMC 515-237-3300 Iowa State Patrol Comm. Center 800-525-5555

LOCAL DETOUR 1/7	GLOBAL DETOUR 2/7	CRITICAL LOCATIONS 3/7	RESPONSE PLAN 4/7	AGENCY CONTACTS 5/7	DMS MESSAGES 6/7	TRAFFIC CONTROL 7/7
-----------------------------------	------------------------------------	---	------------------------------------	--------------------------------------	-----------------------------------	--------------------------------------

FREEWAY DIVERSION	POLK COUNTY IOWA	IA 5 WESTBOUND US 65 SOUTHBOUND	FROM: Exit 77 (Vandalia Rd)	TO: Exit 73 (SE Army Post Rd)	PLAN 6618 2/7
--------------------------	-------------------------	--	---------------------------------------	---	--------------------------



CRITICAL LOCATIONS TO MONITOR FOR GLOBAL	AGENCIES TO NOTIFY Iowa DOT TMC: 515-237-3300 Jasper County Emergency Communications Center (SECC) 641-792-5912 Iowa DOT Statewide TMC 515-237-3300 Iowa State Patrol Comm. Center 800-525-5555
---	--

LOCAL DETOUR 1/7	GLOBAL DETOUR 2/7	CRITICAL LOCATIONS 3/7	RESPONSE PLAN 4/7	AGENCY CONTACTS 5/7	DMS MESSAGES 6/7	TRAFFIC CONTROL 7/7
---------------------------------	----------------------------------	---------------------------------------	----------------------------------	------------------------------------	---------------------------------	------------------------------------

Iowa DOT TMC: 515-237-3300

ENSURE ALL OVERWEIGHT AND OVERSIZE VEHICLES ARE PARKED SAFELY

FREEWAY DIVERSION	POLK COUNTY IOWA	IA 5 WESTBOUND US 65 SOUTHBOUND	FROM: Exit 77 (Vandalia Rd) TO: Exit 73 (SE Army Post Rd)	PLAN 6618 3/7
CRITICAL AREAS TO MONITOR				

LOCATION	EXIT	SITUATION	RESPONSE
-----------------	-------------	------------------	-----------------

Local Diversion - Primary

SB US 65 Off Ramp	79	Traffic backing up on ramp	Deploy traffic control individual Adjust Signal Timing Use secondary route
IA 163/E University Ave & US 6/Hubbell Ave		Traffic backing up at intersection	Deploy traffic control individual Adjust Signal Timing Use secondary route
IA 163/E University Ave & US 69/E 14th St		Traffic backing up at intersection turning left	Deploy traffic control individual Adjust Signal Timing Use secondary route
US 69/SE 14th St & E Grand Ave		Traffic backing up at intersection	Deploy traffic control individual Adjust Signal Timing Use secondary route
US 69/SE 14th St & Indianola Ave		Traffic backing up at intersection	Deploy traffic control individual Adjust Signal Timing Use secondary route
US 69/SE 14th St & E Army Post Rd		Traffic backing up at intersection	Deploy traffic control individual Adjust Signal Timing Use secondary route

Local Diversion - Secondary

NO CRITICAL AREAS TO MONITOR

Global Diversion

NO GLOBAL AVAILABLE

LOCAL DETOUR 1/7	GLOBAL DETOUR 2/7	CRITICAL LOCATIONS 3/7	RESPONSE PLAN 4/7	AGENCY CONTACTS 5/7	DMS MESSAGES 6/7	TRAFFIC CONTROL 7/7
---------------------------------	----------------------------------	---------------------------------------	----------------------------------	------------------------------------	---------------------------------	------------------------------------

Iowa DOT TMC: 515-237-3300

ENSURE ALL OVERWEIGHT AND OVERSIZE VEHICLES ARE PARKED SAFELY

FREEWAY DIVERSION	POLK COUNTY IOWA	IA 5 WESTBOUND US 65 SOUTHBOUND	FROM: Exit 77 (Vandalia Rd) TO: Exit 73 (SE Army Post Rd)	PLAN 6618 4/7
ALTERNATE ROUTE RESPONSE PLAN				

Minor Impact to Traffic (Less Than 30 Minutes)

Off Peak – Shoulder Blocked	Diversion not implemented: <ul style="list-style-type: none"> On-scene traffic control Deploy informational DMS messaging for approaching traffic
Off Peak – Shoulder and One Lane Blocked	

Intermediate Impact to Traffic (30 Minutes to 2 Hours)

Peak Period – Shoulder Blocked	Diversion not implemented: <ul style="list-style-type: none"> On-scene traffic control Deploy informational DMS messaging for approaching traffic
Off Period – Shoulder and One Lane Blocked	
Peak Period – Shoulder and One Lane Blocked	Partial Diversion: <ul style="list-style-type: none"> On-scene traffic control Deploy informational DMS messaging for approaching traffic Deploy DMS messaging directing through traffic to use diversion routes Monitor local diversion routes at critical locations as needed
All Lanes Blocked	Full Diversion: <ul style="list-style-type: none"> On-scene traffic control Deploy DMS messaging directing all traffic to use diversion routes Deploy law enforcement to direct traffic at critical locations

Major Impact to Traffic (Greater Than 2 Hours)

Peak Period – Shoulder Blocked	Diversion not implemented: <ul style="list-style-type: none"> On-scene traffic control Deploy informational DMS messaging for approaching traffic
Off Period – Shoulder and One Lane Blocked	
Peak Period – Shoulder and One Lane Blocked	Partial/Discretionary Diversion: <ul style="list-style-type: none"> Deploy cones, barricades, and other appropriate traffic control devices Deploy informational DMS messaging for approaching traffic Deploy DMS messaging directing through traffic to use diversion routes Divert traffic to local diversion routes at discretion of incident commander
All Lanes Blocked	Full Diversion: <ul style="list-style-type: none"> Deploy cones, barricades, and other appropriate traffic control devices Deploy DMS messaging directing all traffic to use diversion routes Deploy law enforcement to direct traffic at critical locations

LOCAL DETOUR 1/7	GLOBAL DETOUR 2/7	CRITICAL LOCATIONS 3/7	RESPONSE PLAN 4/7	AGENCY CONTACTS 5/7	DMS MESSAGES 6/7	TRAFFIC CONTROL 7/7
---------------------------------	----------------------------------	---------------------------------------	----------------------------------	------------------------------------	---------------------------------	------------------------------------

FREEWAY DIVERSION	POLK COUNTY IOWA	IA 5 WESTBOUND US 65 SOUTHBOUND	FROM: Exit 77 (Vandalia Rd) TO: Exit 73 (SE Army Post Rd)	PLAN 6618 5A/7
------------------------------	-----------------------------	--	--	---------------------------

CRITICAL CONTACTS

Jasper County Emergency Communications Center (SECC) 641-792-5912	Iowa DOT Statewide TMC 515-237-3300	Iowa State Patrol Comm. Center 800-525-5555
---	---	---

Commented [KS1]: Is this correct?

RESPONSIBILITIES

Jasper County Emergency Communications Center (SECC)	641-792-5912
Coordinate with the incident commander as to whether a diversion route is needed and which one should be implemented. <ul style="list-style-type: none">• Notify Iowa DOT statewide TMC of route implemented, incident specific or maintenance needs, and who the incident commander is.• Dispatch County Sheriff, local law enforcement, and fire departments as needed.• Inform local municipalities and other jurisdictions that a diversion route is being implemented.• Deploy law enforcement to direct traffic at critical locations as needed. <u>Emergency Responders:</u> <ul style="list-style-type: none">• Secure scene.• Provide incident information, diversion route recommendations, and towing needs to E911.• Minimize impact to traffic.• Provide manual traffic control as needed, or as directed by E911 at critical locations.	

Iowa DOT Statewide TMC	515-237-3300
Deploy informational DMS and 511 messages to alert motorists of construction, delays, incidents, closures, etc. and/or directional DMS messaging to direct traffic to the implemented diversion route. <ul style="list-style-type: none">• Monitor incidents and critical locations along the implemented diversion route.• Coordinate with Iowa DOT maintenance facilities regarding traffic control needs.• Deploy PDMS and Portable CCTV devices as needed for longer duration incidents.• Coordinate with local municipalities regarding the modification of signals, signal timing, or stop signs.• Coordinate with railroad authority regarding key crossings along the implemented diversion route.	

Iowa State Patrol Comm. Center	800-525-5555
Dispatch State Patrol. <u>On-Scene Incident Commander:</u> <ul style="list-style-type: none">• Secure scene.• Notify appropriate communications center of incident location, anticipated duration, affected lanes, and identify the incident commander.• Coordinate with the communications center regarding diversion route needs.• Minimize impact to traffic through coordination of on-scene traffic control.• Ensure overweight vehicles are parked.• When the incident is safely cleared, notify the appropriate communications center that the diversion route is no longer needed.	

LOCAL DETOUR 1/7	GLOBAL DETOUR 2/7	CRITICAL LOCATIONS 3/7	RESPONSE PLAN 4/7	AGENCY CONTACTS 5/7	DMS MESSAGES 6/7	TRAFFIC CONTROL 7/7
---------------------------------	----------------------------------	---------------------------------------	----------------------------------	------------------------------------	---------------------------------	------------------------------------

Iowa DOT TMC: 515-237-3300 **ENSURE ALL OVERWEIGHT AND OVERSIZE VEHICLES ARE PARKED SAFELY**

FREEWAY DIVERSION	POLK COUNTY IOWA	IA 5 WESTBOUND US 65 SOUTHBOUND	FROM: Exit 77 (Vandalia Rd) TO: Exit 73 (SE Army Post Rd)	PLAN 6618 5B/7
ADDITIONAL CONTACT INFORMATION				

Jasper County Emergency Communications Center (SECC)	
Des Moines Dispatch	515-283-4811
DOT Traffic Operations Center	515-237-3300
Polk County Dispatch	515-286-3333
State Patrol Communications	515-323-4360
West Des Moines Dispatch	515-222-3321
Iowa State Patrol	515-725-0010

Iowa State Patrol Comm. Center	
Iowa State Patrol – District 1	515-725-0010
Iowa State Patrol – District 15	515-281-6176
Iowa State Patrol – District 16	515-281-3879
Iowa State Patrol – Central HQ	515-725-6090

Iowa DOT Statewide TMC	
Iowa DOT Statewide TMC (Toll Free)	888-449-9672
Iowa DOT Maint. Garage – Des Moines	515-265-1614

LOCAL DETOUR 1/7	GLOBAL DETOUR 2/7	CRITICAL LOCATIONS 3/7	RESPONSE PLAN 4/7	AGENCY CONTACTS 5/7	DMS MESSAGES 6/7	TRAFFIC CONTROL 7/7
Iowa DOT TMC: 515-237-3300			ENSURE ALL OVERWEIGHT AND OVERSIZE VEHICLES ARE PARKED SAFELY			

FREEWAY DIVERSION	POLK COUNTY IOWA	IA 5 WESTBOUND US 65 SOUTHBOUND	FROM: Exit 77 (Vandalia Rd) TO: Exit 73 (SE Army Post Rd)	PLAN 6618 6/7
DMS MESSAGES				

LOCAL PRIMARY	Sign Location	Page 1	Page 2
	I-80 WB @ Altoona (OH)	US 65S BYPASS CLOSED AT VANDALIA DR	
	I-80 WB @ US 65 (SM)	US 65S CLOSED AT EX 77	

LOCAL SECONDARY	Sign Location	Page 1	Page 2
	NO DMS AVAILABLE		

GLOBAL	Sign Location	Page 1	Page 2
	NO GLOBAL AVAILABLE		

LOCAL DETOUR 1/7	GLOBAL DETOUR 2/7	CRITICAL LOCATIONS 3/7	RESPONSE PLAN 4/7	AGENCY CONTACTS 5/7	DMS MESSAGES 6/7	TRAFFIC CONTROL 7/7
---------------------------------	----------------------------------	---------------------------------------	----------------------------------	------------------------------------	---------------------------------	------------------------------------

FREEWAY DIVERSION	POLK COUNTY IOWA	IA 5 WESTBOUND US 65 SOUTHBOUND	FROM: Exit 77 (Vandalia Rd) T0: Exit 73 (SE Army Post Rd)	PLAN 6618 7/7
TRAFFIC CONTROL				

LOCATION	INITIAL ACTION/RESOURCE	EXTENDED ACTION/RESOURCE
-----------------	--------------------------------	---------------------------------

Local Diversion - Primary

SB US 65 Off Ramp Exit 79	Law enforcement traffic control as needed	Install Temporary Diversion Trailblazing Signage as Needed
IA 163/E University Ave & US 6/Hubbell Ave	Law enforcement traffic control as needed	Install Temporary Diversion Trailblazing Signage as Needed
IA 163/E University Ave & US 69/E 14th St	Law enforcement traffic control as needed	Install Temporary Diversion Trailblazing Signage as Needed
US 69/SE 14th St Between IA 163/E University Ave & IA 5/US 65	Law enforcement traffic control as needed	Install Temporary Diversion Trailblazing Signage as Needed
US 69/SE 14th St & E Grand Ave	Law enforcement traffic control as needed	Install Temporary Diversion Trailblazing Signage as Needed
US 69/SE 14th St & Indianola Ave	Law enforcement traffic control as needed	Install Temporary Diversion Trailblazing Signage as Needed
US 69/SE 14th St & E Army Post Rd	Law enforcement traffic control as needed	Install Temporary Diversion Trailblazing Signage as Needed

Local Diversion - Secondary

SB US 65 Off Ramp Exit 79	Law enforcement traffic control as needed	Install Temporary Diversion Trailblazing Signage as Needed
NE University Ave & IA 316 S	Law enforcement traffic control as needed	Install Temporary Diversion Trailblazing Signage as Needed
IA 316 S & E McKinney St (in Runnells)	Law enforcement traffic control as needed	Install Temporary Diversion Trailblazing Signage as Needed
IA 316 S & IA 5	Law enforcement traffic control as needed	Install Temporary Diversion Trailblazing Signage as Needed
IA 316 S Between NE University Ave & IA 5	Law enforcement traffic control as needed	Install Temporary Diversion Trailblazing Signage as Needed
IA 5 & S 5th St	Law enforcement traffic control as needed	Install Temporary Diversion Trailblazing Signage as Needed

Global Diversion

NO GLOBAL AVAILABLE

LOCAL DETOUR 1/7	GLOBAL DETOUR 2/7	CRITICAL LOCATIONS 3/7	RESPONSE PLAN 4/7	AGENCY CONTACTS 5/7	DMS MESSAGES 6/7	TRAFFIC CONTROL 7/7
---------------------------------	----------------------------------	---------------------------------------	----------------------------------	------------------------------------	---------------------------------	------------------------------------

Iowa DOT TMC: 515-237-3300 **ENSURE ALL OVERWEIGHT AND OVERSIZE VEHICLES ARE PARKED SAFELY**