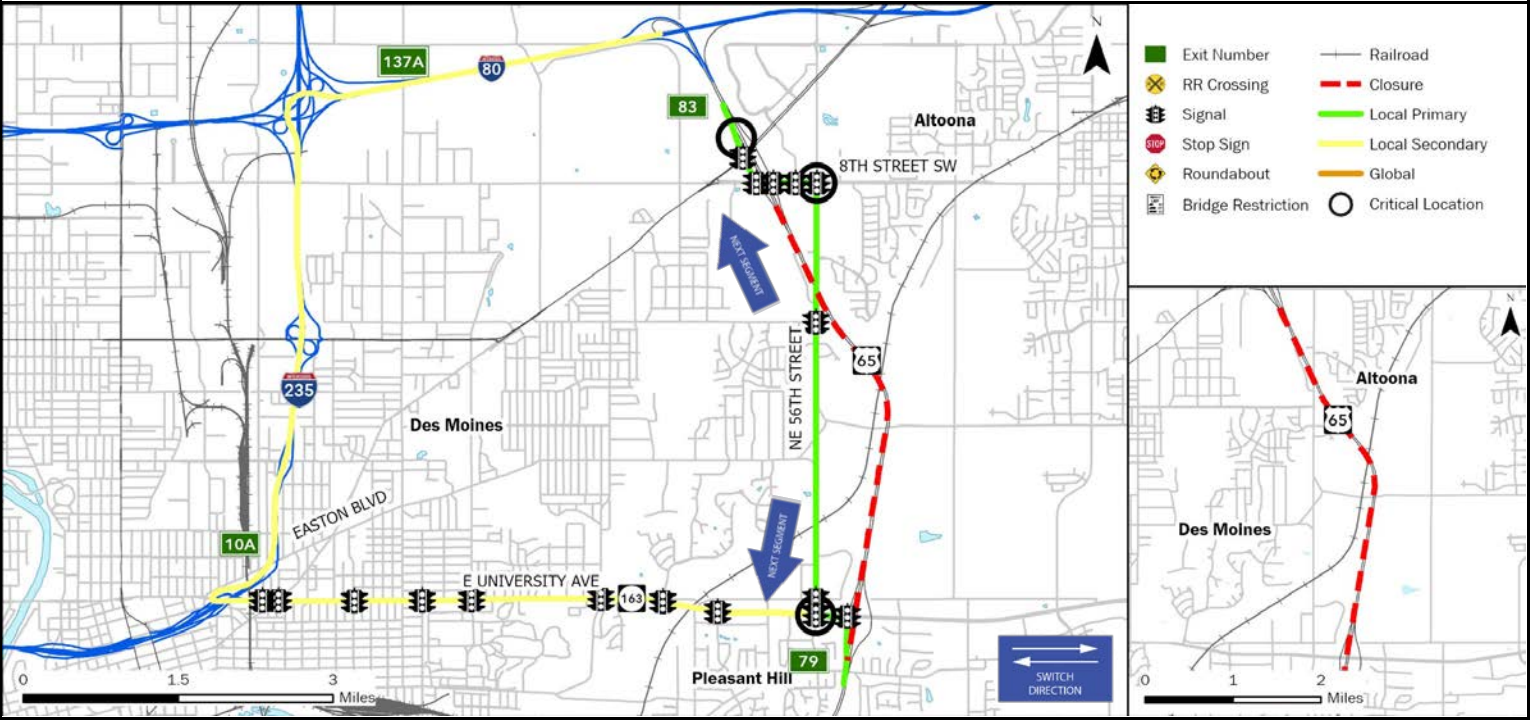


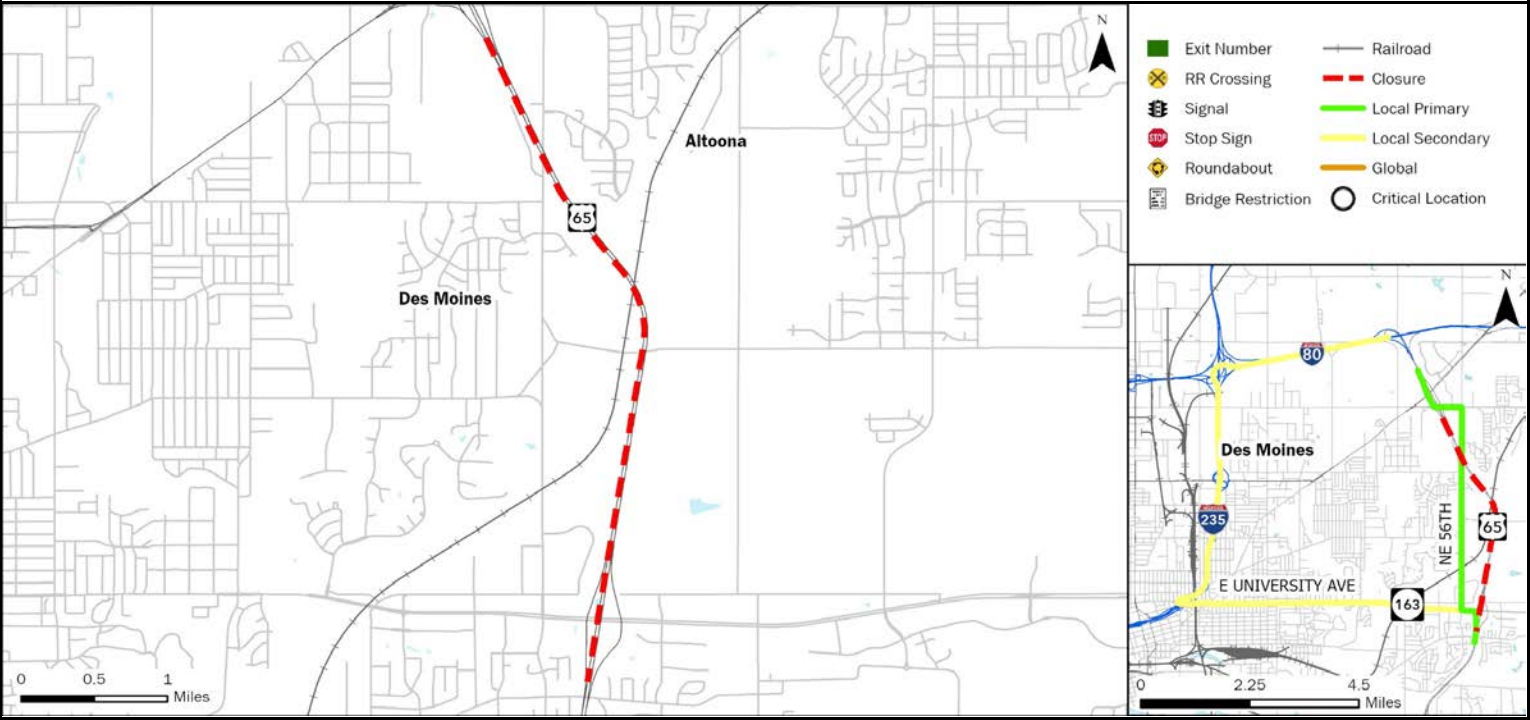
| | | | | | |
|--------------------------|-------------------------|--|--|--|--------------------------|
| FREEWAY DIVERSION | POLK COUNTY IOWA | IA 5 WESTBOUND US 65 SOUTHBOUND | FROM: Exit 83 (US 6/Hubbell Ave) | TO: Exit 79 (IA 163/Univ. Ave) | PLAN 6622 1/7 |
|--------------------------|-------------------------|--|--|--|--------------------------|



| | |
|--|---|
| CRITICAL LOCATIONS TO MONITOR FOR LOCAL PRIMARY | AGENCIES TO NOTIFY Iowa DOT TMC: 515-237-3300 |
| SB US 65 Off Ramp (Exit 83) 8th St SW & 34th Ave SW NE 56th St & IA 163/E University Ave | Jasper County Emergency Communications Center (SECC) 641-792-5912 Iowa DOT Statewide TMC 515-237-3300 Iowa State Patrol Comm. Center 800-525-5555 |

| | | | | | | |
|---------------------------------|----------------------------------|---------------------------------------|----------------------------------|------------------------------------|---------------------------------|------------------------------------|
| LOCAL DETOUR 1/7 | GLOBAL DETOUR 2/7 | CRITICAL LOCATIONS 3/7 | RESPONSE PLAN 4/7 | AGENCY CONTACTS 5/7 | DMS MESSAGES 6/7 | TRAFFIC CONTROL 7/7 |
|---------------------------------|----------------------------------|---------------------------------------|----------------------------------|------------------------------------|---------------------------------|------------------------------------|

| | | | | | |
|--------------------------|-------------------------|--|--|--|--------------------------|
| FREEWAY DIVERSION | POLK COUNTY IOWA | IA 5 WESTBOUND US 65 SOUTHBOUND | FROM: Exit 83 (US 6/Hubbell Ave) | TO: Exit 79 (IA 163/Univ. Ave) | PLAN 6622 2/7 |
|--------------------------|-------------------------|--|--|--|--------------------------|



| | |
|---|--|
| CRITICAL LOCATIONS TO MONITOR FOR GLOBAL | AGENCIES TO NOTIFY Iowa DOT TMC: 515-237-3300 Jasper County Emergency Communications Center (SECC) 641-792-5912 Iowa DOT Statewide TMC 515-237-3300 Iowa State Patrol Comm. Center 800-525-5555 |
|---|--|

| | | | | | | |
|---------------------------------|----------------------------------|---------------------------------------|----------------------------------|------------------------------------|---------------------------------|------------------------------------|
| LOCAL DETOUR 1/7 | GLOBAL DETOUR 2/7 | CRITICAL LOCATIONS 3/7 | RESPONSE PLAN 4/7 | AGENCY CONTACTS 5/7 | DMS MESSAGES 6/7 | TRAFFIC CONTROL 7/7 |
|---------------------------------|----------------------------------|---------------------------------------|----------------------------------|------------------------------------|---------------------------------|------------------------------------|

Iowa DOT TMC: 515-237-3300 ENSURE ALL OVERWEIGHT AND OVERSIZE VEHICLES ARE PARKED SAFELY

| | | | | |
|----------------------------------|-----------------------------|--|--|--------------------------|
| FREEWAY DIVERSION | POLK COUNTY IOWA | IA 5 WESTBOUND US 65 SOUTHBOUND | FROM: Exit 83 (US 6/Hubbell Ave) TO: Exit 79 (IA 163/Univ. Ave) | PLAN 6622 3/7 |
| CRITICAL AREAS TO MONITOR | | | | |

| LOCATION | EXIT | SITUATION | RESPONSE |
|----------|------|-----------|----------|
|----------|------|-----------|----------|

Local Diversion - Primary

| | | | |
|--|----|--|--|
| SB US 65 Off Ramp | 83 | Traffic backing up on ramp | Deploy traffic control individual Adjust Signal Timing Use secondary route |
| 8th St SW & 34th Ave SW | | Traffic backing up in right turn lane | Deploy traffic control individual Adjust Signal Timing Use secondary route |
| NE 56th St & IA 163/ E University Ave | | Traffic backing up at intersection turning left | Deploy traffic control individual Adjust Signal Timing Use secondary route |

Local Diversion - Secondary

| |
|-------------------------------------|
| NO CRITICAL AREAS TO MONITOR |
|-------------------------------------|

Global Diversion

| |
|----------------------------|
| NO GLOBAL AVAILABLE |
|----------------------------|

| | | | | | | |
|---------------------------------|----------------------------------|---------------------------------------|----------------------------------|------------------------------------|---------------------------------|------------------------------------|
| LOCAL DETOUR 1/7 | GLOBAL DETOUR 2/7 | CRITICAL LOCATIONS 3/7 | RESPONSE PLAN 4/7 | AGENCY CONTACTS 5/7 | DMS MESSAGES 6/7 | TRAFFIC CONTROL 7/7 |
|---------------------------------|----------------------------------|---------------------------------------|----------------------------------|------------------------------------|---------------------------------|------------------------------------|

| | | | | |
|--------------------------------------|-----------------------------|--|--|--------------------------|
| FREEWAY DIVERSION | POLK COUNTY IOWA | IA 5 WESTBOUND US 65 SOUTHBOUND | FROM: Exit 83 (US 6/Hubbell Ave) TO: Exit 79 (IA 163/Univ. Ave) | PLAN 6622 4/7 |
| ALTERNATE ROUTE RESPONSE PLAN | | | | |

Minor Impact to Traffic (Less Than 30 Minutes)

| | |
|---|---|
| Off Peak – Shoulder Blocked | Diversion not implemented: <ul style="list-style-type: none"> On-scene traffic control Deploy informational DMS messaging for approaching traffic |
| Off Peak – Shoulder and One Lane Blocked | |

Intermediate Impact to Traffic (30 Minutes to 2 Hours)

| | |
|--|--|
| Peak Period – Shoulder Blocked | Diversion not implemented: <ul style="list-style-type: none"> On-scene traffic control Deploy informational DMS messaging for approaching traffic |
| Off Period – Shoulder and One Lane Blocked | |
| Peak Period – Shoulder and One Lane Blocked | Partial Diversion: <ul style="list-style-type: none"> On-scene traffic control Deploy informational DMS messaging for approaching traffic Deploy DMS messaging directing through traffic to use diversion routes Monitor local diversion routes at critical locations as needed |
| All Lanes Blocked | Full Diversion: <ul style="list-style-type: none"> On-scene traffic control Deploy DMS messaging directing all traffic to use diversion routes Deploy law enforcement to direct traffic at critical locations |

Major Impact to Traffic (Greater Than 2 Hours)

| | |
|--|---|
| Peak Period – Shoulder Blocked | Diversion not implemented: <ul style="list-style-type: none"> On-scene traffic control Deploy informational DMS messaging for approaching traffic |
| Off Period – Shoulder and One Lane Blocked | |
| Peak Period – Shoulder and One Lane Blocked | Partial/Discretionary Diversion: <ul style="list-style-type: none"> Deploy cones, barricades, and other appropriate traffic control devices Deploy informational DMS messaging for approaching traffic Deploy DMS messaging directing through traffic to use diversion routes Divert traffic to local diversion routes at discretion of incident commander |
| All Lanes Blocked | Full Diversion: <ul style="list-style-type: none"> Deploy cones, barricades, and other appropriate traffic control devices Deploy DMS messaging directing all traffic to use diversion routes Deploy law enforcement to direct traffic at critical locations |

| | | | | | | |
|---------------------------------|----------------------------------|---------------------------------------|----------------------------------|------------------------------------|---------------------------------|------------------------------------|
| LOCAL DETOUR 1/7 | GLOBAL DETOUR 2/7 | CRITICAL LOCATIONS 3/7 | RESPONSE PLAN 4/7 | AGENCY CONTACTS 5/7 | DMS MESSAGES 6/7 | TRAFFIC CONTROL 7/7 |
|---------------------------------|----------------------------------|---------------------------------------|----------------------------------|------------------------------------|---------------------------------|------------------------------------|

| | | | | |
|------------------------------|-----------------------------|--|--|---------------------------|
| FREEWAY DIVERSION | POLK COUNTY IOWA | IA 5 WESTBOUND US 65 SOUTHBOUND | FROM: Exit 83 (US 6/Hubbell Ave) TO: Exit 79 (IA 163/Univ. Ave) | PLAN 6622 5A/7 |
| CRITICAL CONTACTS | | | | |

| | | |
|---|---|---|
| Jasper County Emergency Communications Center (SECC) 641-792-5912 | Iowa DOT Statewide TMC 515-237-3300 | Iowa State Patrol Comm. Center 800-525-5555 |
|---|---|---|

Commented [KS1]: Is this correct?

RESPONSIBILITIES

| | |
|---|---------------------|
| Jasper County Emergency Communications Center (SECC) | 641-792-5912 |
| Coordinate with the incident commander as to whether a diversion route is needed and which one should be implemented. <ul style="list-style-type: none">• Notify Iowa DOT statewide TMC of route implemented, incident specific or maintenance needs, and who the incident commander is.• Dispatch County Sheriff, local law enforcement, and fire departments as needed.• Inform local municipalities and other jurisdictions that a diversion route is being implemented.• Deploy law enforcement to direct traffic at critical locations as needed. <u>Emergency Responders:</u> <ul style="list-style-type: none">• Secure scene.• Provide incident information, diversion route recommendations, and towing needs to E911.• Minimize impact to traffic.• Provide manual traffic control as needed, or as directed by E911 at critical locations. | |

| | |
|--|---------------------|
| Iowa DOT Statewide TMC | 515-237-3300 |
| Deploy informational DMS and 511 messages to alert motorists of construction, delays, incidents, closures, etc. and/or directional DMS messaging to direct traffic to the implemented diversion route. <ul style="list-style-type: none">• Monitor incidents and critical locations along the implemented diversion route.• Coordinate with Iowa DOT maintenance facilities regarding traffic control needs.• Deploy PDMS and Portable CCTV devices as needed for longer duration incidents.• Coordinate with local municipalities regarding the modification of signals, signal timing, or stop signs.• Coordinate with railroad authority regarding key crossings along the implemented diversion route. | |

| | |
|--|---------------------|
| Iowa State Patrol Comm. Center | 800-525-5555 |
| Dispatch State Patrol. <u>On-Scene Incident Commander:</u> <ul style="list-style-type: none">• Secure scene.• Notify appropriate communications center of incident location, anticipated duration, affected lanes, and identify the incident commander.• Coordinate with the communications center regarding diversion route needs.• Minimize impact to traffic through coordination of on-scene traffic control.• Ensure overweight vehicles are parked.• When the incident is safely cleared, notify the appropriate communications center that the diversion route is no longer needed. | |

| | | | | | | |
|--------------------------------|---------------------------------|--------------------------------------|---------------------------------|-----------------------------------|--------------------------------|-----------------------------------|
| LOCAL DETOUR 1/7 | GLOBAL DETOUR 2/7 | CRITICAL LOCATIONS 3/7 | RESPONSE PLAN 4/7 | AGENCY CONTACTS 5/7 | DMS MESSAGES 6/7 | TRAFFIC CONTROL 7/7 |
|--------------------------------|---------------------------------|--------------------------------------|---------------------------------|-----------------------------------|--------------------------------|-----------------------------------|

Iowa DOT TMC: 515-237-3300

ENSURE ALL OVERWEIGHT AND OVERSIZE VEHICLES ARE PARKED SAFELY

| | | | | |
|---------------------------------------|-----------------------------|--|--|---------------------------|
| FREEWAY DIVERSION | POLK COUNTY IOWA | IA 5 WESTBOUND US 65 SOUTHBOUND | FROM: Exit 83 (US 6/Hubbell Ave) TO: Exit 79 (IA 163/Univ. Ave) | PLAN 6622 5B/7 |
| ADDITIONAL CONTACT INFORMATION | | | | |

| | |
|---|--------------|
| Jasper County Emergency Communications Center (SECC) | |
| Des Moines Dispatch | 515-283-4811 |
| DOT Traffic Operations Center | 515-237-3300 |
| Polk County Dispatch | 515-286-3333 |
| State Patrol Communications | 515-323-4360 |
| West Des Moines Dispatch | 515-222-3321 |
| Iowa State Patrol | 515-725-0010 |

| | |
|---------------------------------------|--------------|
| Iowa State Patrol Comm. Center | |
| Iowa State Patrol – District 1 | 515-725-0010 |
| Iowa State Patrol – District 15 | 515-281-6176 |
| Iowa State Patrol – District 16 | 515-281-3879 |
| Iowa State Patrol – Central HQ | 515-725-6090 |

| | |
|-------------------------------------|--------------|
| Iowa DOT Statewide TMC | |
| Iowa DOT Statewide TMC (Toll Free) | 888-449-9672 |
| Iowa DOT Maint. Garage – Des Moines | 515-265-1614 |

| | | | | | | |
|---------------------------------|----------------------------------|---------------------------------------|---|------------------------------------|---------------------------------|------------------------------------|
| LOCAL DETOUR 1/7 | GLOBAL DETOUR 2/7 | CRITICAL LOCATIONS 3/7 | RESPONSE PLAN 4/7 | AGENCY CONTACTS 5/7 | DMS MESSAGES 6/7 | TRAFFIC CONTROL 7/7 |
| Iowa DOT TMC: 515-237-3300 | | | ENSURE ALL OVERWEIGHT AND OVERSIZE VEHICLES ARE PARKED SAFELY | | | |

| | | | | |
|------------------------------|-----------------------------|--|--|--------------------------|
| FREEWAY DIVERSION | POLK COUNTY IOWA | IA 5 WESTBOUND US 65 SOUTHBOUND | FROM: Exit 83 (US 6/Hubbell Ave) TO: Exit 79 (IA 163/Univ. Ave) | PLAN 6622 6/7 |
| DMS MESSAGES | | | | |

| | | | |
|--------------------------|------------------------|---------------------------------------|---------------|
| LOCAL PRIMARY | Sign Location | Page 1 | Page 2 |
| | I-80 WB @ Altoona (OH) | US 65S BYPASS CLOSED AT HUBBELL | |
| | I-80 WB @ US 65 (SM) | US 65S CLOSED AT EX 83 | |

| | | | |
|----------------------------|-------------------------|---------------|---------------|
| LOCAL SECONDARY | Sign Location | Page 1 | Page 2 |
| | NO DMS AVAILABLE | | |

| | | | |
|---------------|----------------------------|---------------|---------------|
| GLOBAL | Sign Location | Page 1 | Page 2 |
| | NO GLOBAL AVAILABLE | | |

| | | | | | | |
|---------------------------------|----------------------------------|---------------------------------------|----------------------------------|------------------------------------|---------------------------------|------------------------------------|
| LOCAL DETOUR 1/7 | GLOBAL DETOUR 2/7 | CRITICAL LOCATIONS 3/7 | RESPONSE PLAN 4/7 | AGENCY CONTACTS 5/7 | DMS MESSAGES 6/7 | TRAFFIC CONTROL 7/7 |
|---------------------------------|----------------------------------|---------------------------------------|----------------------------------|------------------------------------|---------------------------------|------------------------------------|

| | | | | |
|------------------------------|-----------------------------|--|--|--------------------------|
| FREEWAY DIVERSION | POLK COUNTY IOWA | IA 5 WESTBOUND US 65 SOUTHBOUND | FROM: Exit 83 (US 6/Hubbell Ave) TO: Exit 79 (IA 163/Univ. Ave) | PLAN 6622 7/7 |
| TRAFFIC CONTROL | | | | |

| LOCATION | INITIAL ACTION/RESOURCE | EXTENDED ACTION/RESOURCE |
|-----------------|--------------------------------|---------------------------------|
|-----------------|--------------------------------|---------------------------------|

Local Diversion - Primary

| | | |
|---|---|--|
| SB US 65 Off Ramp Exit 83 | Law enforcement traffic control as needed | Install Temporary Diversion Trailblazing Signage as Needed |
| 8th St SW & 34th Ave SW | Law enforcement traffic control as needed | Install Temporary Diversion Trailblazing Signage as Needed |
| NE 56th St. Between 8th St SW & IA 163/E University Ave | Law enforcement traffic control as needed | Install Temporary Diversion Trailblazing Signage as Needed |
| NE 56th St & IA 163/ E University Ave | Law enforcement traffic control as needed | Install Temporary Diversion Trailblazing Signage as Needed |

Local Diversion - Secondary

| | | |
|---------------------------------------|---|--|
| SB I-235 Off Ramp Exit 10A | Law enforcement traffic control as needed | Install Temporary Diversion Trailblazing Signage as Needed |
| WB I-80 Between US 65 & I-235 | Law enforcement traffic control as needed | Install Temporary Diversion Trailblazing Signage as Needed |
| WB I-235 Between I-80 & IA 163 | Law enforcement traffic control as needed | Install Temporary Diversion Trailblazing Signage as Needed |
| IA 163/E University Ave & NE 56th St. | Law enforcement traffic control as needed | Install Temporary Diversion Trailblazing Signage as Needed |

Global Diversion

NO GLOBAL AVAILABLE

| | | | | | | |
|---------------------------------|----------------------------------|---------------------------------------|----------------------------------|------------------------------------|---------------------------------|------------------------------------|
| LOCAL DETOUR 1/7 | GLOBAL DETOUR 2/7 | CRITICAL LOCATIONS 3/7 | RESPONSE PLAN 4/7 | AGENCY CONTACTS 5/7 | DMS MESSAGES 6/7 | TRAFFIC CONTROL 7/7 |
|---------------------------------|----------------------------------|---------------------------------------|----------------------------------|------------------------------------|---------------------------------|------------------------------------|

Iowa DOT TMC: 515-237-3300

ENSURE ALL OVERWEIGHT AND OVERSIZE VEHICLES ARE PARKED SAFELY