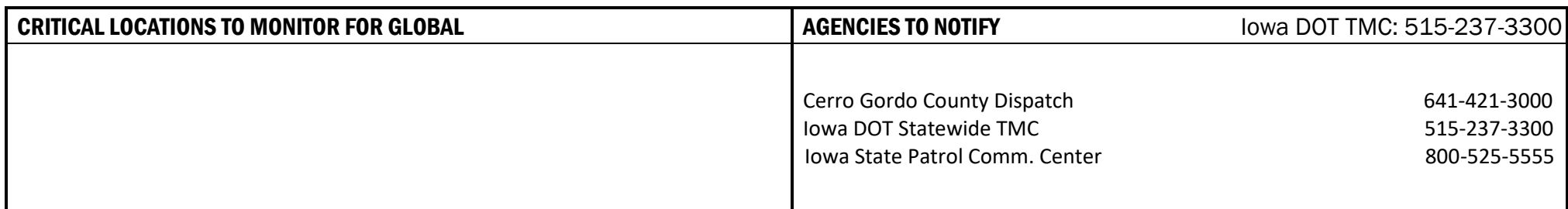


CRITICAL LOCATIONS TO MONITOR FOR LOCAL PRIMARY	AGENCIES TO NOTIFY	Iowa DOT TMC: 515-237-3300
I-35 NB Off Ramp to B43 WB B43 WB to Grouse Ave NB Grouse Ave NB to 4th Ave S EB 4th Ave S EB to I-35 NB	Cerro Gordo County Dispatch Iowa DOT Statewide TMC Iowa State Patrol Comm. Center	641-421-3000 515-237-3300 800-525-5555



FREEWAY DIVERSION	CERRO GORDO COUNTY IOWA	I-35 NORTHBOUND	FROM: Exit 188 (B43) TO: Exit 193 (4th Ave S)	PLAN 7052 3/7
CRITICAL AREAS TO MONITOR				

LOCATION	EXIT	SITUATION	RESPONSE
----------	------	-----------	----------

Local Diversion - Primary

I-35 NB Off Ramp to B43 WB	188	Traffic backing up onto interstate	Monitor location
B43 WB to Grouse Ave NB		Traffic backing up due to stop sign and significant delays due to right turn	Notify local law enforcement
Grouse Ave NB to 4th Ave S EB		Traffic backing up due to stop sign and significant delays due to right turn	Notify local law enforcement
4th Ave S EB to I-35 NB	182	Traffic backing up and significant delays due to left turn	Notify local law enforcement

Local Diversion - Secondary

NO LOCAL SECONDARY AVAILABLE

Global Diversion

NO CRITICAL LOCATIONS TO MONITOR

LOCAL DETOUR 1/7	GLOBAL DETOUR 2/7	CRITICAL LOCATIONS 3/7	RESPONSE PLAN 4/7	AGENCY CONTACTS 5/7	DMS MESSAGES 6/7	TRAFFIC CONTROL 7/7
---------------------------------	----------------------------------	---------------------------------------	----------------------------------	------------------------------------	---------------------------------	------------------------------------

FREEWAY DIVERSION	CERRO GORDO COUNTY IOWA	I-35 NORTHBOUND	FROM: Exit 188 (B43) TO: Exit 193 (4th Ave S)	PLAN 7052 4/7
ALTERNATE ROUTE RESPONSE PLAN				

Minor Impact to Traffic (Less Than 30 Minutes)

Off Peak – Shoulder Blocked	Diversion not implemented: <ul style="list-style-type: none"> • On-scene traffic control • Deploy informational DMS messaging for approaching traffic
Off Peak – Shoulder and One Lane Blocked	

Intermediate Impact to Traffic (30 Minutes to 2 Hours)

Peak Period – Shoulder Blocked	Diversion not implemented: <ul style="list-style-type: none"> • On-scene traffic control • Deploy informational DMS messaging for approaching traffic
Off Period – Shoulder and One Lane Blocked	
Peak Period – Shoulder and One Lane Blocked	Partial Diversion: <ul style="list-style-type: none"> • On-scene traffic control • Deploy informational DMS messaging for approaching traffic • Deploy DMS messaging directing through traffic to use diversion routes • Monitor local diversion routes at critical locations as needed
All Lanes Blocked	Full Diversion: <ul style="list-style-type: none"> • On-scene traffic control • Deploy DMS messaging directing all traffic to use diversion routes • Deploy law enforcement to direct traffic at critical locations

Major Impact to Traffic (Greater Than 2 Hours)

Peak Period – Shoulder Blocked	Diversion not implemented: <ul style="list-style-type: none"> • On-scene traffic control • Deploy informational DMS messaging for approaching traffic
Off Period – Shoulder and One Lane Blocked	
Peak Period – Shoulder and One Lane Blocked	Partial/Discretionary Diversion: <ul style="list-style-type: none"> • Deploy cones, barricades, and other appropriate traffic control devices • Deploy informational DMS messaging for approaching traffic • Deploy DMS messaging directing through traffic to use diversion routes • Divert traffic to local diversion routes at discretion of incident commander
All Lanes Blocked	Full Diversion: <ul style="list-style-type: none"> • Deploy cones, barricades, and other appropriate traffic control devices • Deploy DMS messaging directing all traffic to use diversion routes • Deploy law enforcement to direct traffic at critical locations

LOCAL DETOUR 1/7	GLOBAL DETOUR 2/7	CRITICAL LOCATIONS 3/7	RESPONSE PLAN 4/7	AGENCY CONTACTS 5/7	DMS MESSAGES 6/7	TRAFFIC CONTROL 7/7
---------------------------------	----------------------------------	---------------------------------------	----------------------------------	------------------------------------	---------------------------------	------------------------------------

FREEWAY DIVERSION	CERRO GORDO COUNTY IOWA	I-35 NORTHBOUND	FROM: Exit 188 (B43) TO: Exit 193 (4th Ave S)	PLAN 7052 5A/7
------------------------------	------------------------------------	------------------------	--	---------------------------

CRITICAL CONTACTS

Cerro Gordo County Dispatch 641-421-3000	Iowa DOT Statewide TMC 515-237-3300	Iowa State Patrol Comm. Center 800-525-5555
--	---	---

RESPONSIBILITIES

Cerro Gordo County Dispatch	641-421-3000
<p>Coordinate with the incident commander as to which diversion route should be implemented based on Iowa DOT statewide TMC recommendations.</p> <ul style="list-style-type: none"> Notify Iowa DOT statewide TMC of route implemented, incident specific or maintenance needs, and who the incident commander is. Dispatch County Sheriff, local law enforcement, and fire departments as needed. Inform local municipalities and other jurisdictions that a diversion route is being implemented. Deploy law enforcement to direct traffic at critical locations as needed 	
<p><u>Emergency Responders:</u></p> <ul style="list-style-type: none"> Secure scene. Provide incident information, diversion route implemented, and towing needs to E911. Minimize impact to traffic. Ensure overweight and oversize vehicles are parked. Provide manual traffic control as needed, or as directed by E911 at critical locations. 	

Iowa DOT Statewide TMC	515-237-3300
<p>Determine and recommend diversion route to be implemented to county dispatch and state patrol. Deploy informational DMS and 511 messages to alert motorists of construction, delays, incidents, closures, etc. and/or directional DMS messaging to direct traffic to the implemented diversion route.</p> <ul style="list-style-type: none"> Monitor incidents and critical locations along the implemented diversion route. Coordinate with Iowa DOT maintenance facilities regarding traffic control needs. Deploy PDMS and Portable CCTV devices as needed for longer duration incidents. Coordinate with local municipalities regarding the modification of signals, signal timing, or stop signs. Coordinate with railroad authority regarding key crossings along the implemented diversion route. 	

Iowa State Patrol Comm. Center	800-525-5555
Dispatch State Patrol.	
<p><u>On-Scene Incident Commander:</u></p> <ul style="list-style-type: none"> Secure scene. Notify appropriate communications center of incident location, anticipated duration, affected lanes, and identify the incident commander. Coordinate with the communications center regarding diversion route needs. Minimize impact to traffic through coordination of on-scene traffic control. Ensure overweight and oversize vehicles are parked. When the incident is safely cleared, notify the appropriate communications center that the diversion route is no longer needed. 	

LOCAL DETOUR 1/7	GLOBAL DETOUR 2/7	CRITICAL LOCATIONS 3/7	RESPONSE PLAN 4/7	AGENCY CONTACTS 5/7	DMS MESSAGES 6/7	TRAFFIC CONTROL 7/7
--------------------------------	---------------------------------	--------------------------------------	---------------------------------	-----------------------------------	--------------------------------	-----------------------------------

Iowa DOT TMC: 515-237-3300

ENSURE ALL OVERWEIGHT AND OVERSIZE VEHICLES ARE PARKED SAFELY

FREEWAY DIVERSION	CERRO GORDO COUNTY IOWA	I-35 NORTHBOUND	FROM: Exit 188 (B43) TO: Exit 193 (4th Ave S)	PLAN 7052 5B/7
ADDITIONAL CONTACT INFORMATION				

Cerro Gordo County Dispatch	
Cerro Gordo County Sheriff	641-421-3000
Cerro Gordo County Emergency Mgmt.	641-421-3665
Cerro Gordo County Engineer	641-424-9037
Clear Lake Police Department	641-357-2186
Clear Lake Fire Department	641-357-2613
Clear Lake Public Works	641-357-6135

Iowa State Patrol Comm. Center	
Iowa State Patrol – District 8	641-424-3625

Iowa DOT Statewide TMC	
Iowa DOT Statewide TMC (Toll Free)	888-449-9672
Iowa DOT Maint. Garage – Mason City	641-423-9441

LOCAL DETOUR 1/7	GLOBAL DETOUR 2/7	CRITICAL LOCATIONS 3/7	RESPONSE PLAN 4/7	AGENCY CONTACTS 5/7	DMS MESSAGES 6/7	TRAFFIC CONTROL 7/7
---------------------------------	----------------------------------	---------------------------------------	----------------------------------	------------------------------------	---------------------------------	------------------------------------

FREEWAY DIVERSION	CERRO GORDO COUNTY IOWA	I-35 NORTHBOUND	FROM: Exit 188 (B43) TO: Exit 193 (4th Ave S)	PLAN 7052 6/7
DMS MESSAGES				

LOCAL PRIMARY	Sign Location	Page 1	Page 2
	NO DMS AVAILABLE		

LOCAL SECONDARY	Sign Location	Page 1	Page 2
	NO LOCAL SECONDARY AVAILABLE		

GLOBAL	Sign Location	Page 1	Page 2
	NO DMS AVAILABLE		

LOCAL DETOUR 1/7	GLOBAL DETOUR 2/7	CRITICAL LOCATIONS 3/7	RESPONSE PLAN 4/7	AGENCY CONTACTS 5/7	DMS MESSAGES 6/7	TRAFFIC CONTROL 7/7
---------------------------------	----------------------------------	---------------------------------------	----------------------------------	------------------------------------	---------------------------------	------------------------------------

FREEWAY DIVERSION	CERRO GORDO COUNTY IOWA	I-35 NORTHBOUND	FROM: Exit 188 (B43) TO: Exit 193 (4th Ave S)	PLAN 7052 7/7
TRAFFIC CONTROL				

LOCATION	INITIAL ACTION/RESOURCE	EXTENDED ACTION/RESOURCE
-----------------	--------------------------------	---------------------------------

Local Diversion - Primary

I-35 NB Off Ramp to B43 WB	Detour signing	Monitor location
B43 WB to Grouse Ave NB	Detour signing	Manual traffic control(as needed/peak periods)
Grouse Ave NB to 4 th Ave S EB	Detour signing	Manual traffic control (as needed/peak periods)
4 th Ave S EB to I-35 NB	Monitor location	Manual traffic control (as needed/peak periods)

Local Diversion - Secondary

NO LOCAL SECONDARY AVAILABLE

Global Diversion

NO TRAFFIC CONTROL

LOCAL DETOUR 1/7	GLOBAL DETOUR 2/7	CRITICAL LOCATIONS 3/7	RESPONSE PLAN 4/7	AGENCY CONTACTS 5/7	DMS MESSAGES 6/7	TRAFFIC CONTROL 7/7
-----------------------------------	------------------------------------	---	------------------------------------	--------------------------------------	-----------------------------------	--------------------------------------